

# RNAV (GPS) RWY 10

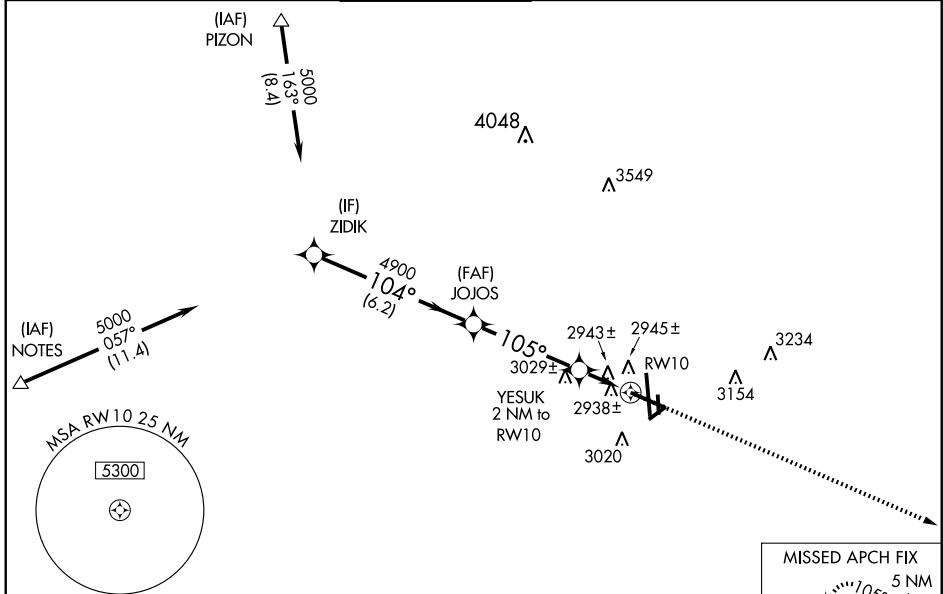
MIDLAND INTL (MAF)

WAAS CH <b>69310</b> W10A	APP CRS <b>105°</b>	Rwy Idg TDZE Apt Elev	<b>8302</b> <b>2868</b> <b>2871</b>
---------------------------------	------------------------	-----------------------------	---

**▽** For uncompensated Baro-VNAV systems, LNAV/VNAV NA below -20°C (-4°) or above 43°C (109°F). DME/DME RNP-0.3 NA. Baro VNAV and VDP NA when using Odessa altimeter setting. For inoperative MALSRR increase LNAV Cat D visibility to RVR 6000.  
**▲** When using Odessa altimeter setting, increase LPV visibility to RVR 5000 all Cats. When Midland Intl altimeter setting not received, use Odessa altimeter setting and increase all DA 41 feet and all MDA 60 feet. Increase LNAV Cat C visibility to RVR 4000.  
 ASR

MALSRR 	MISSED APPROACH: Climb to 4500 direct GORBE and hold.
------------	---

ATIS <b>126.8 235.975</b>	MIDLAND APP CON* <b>124.6 290.4</b>	MIDLAND TOWER* <b>118.7 (CTAF) 0273.45</b>	GND CON <b>121.9 348.6</b>	CLNC DEL <b>118.05 317.65</b>	UNICOM <b>122.95</b>
------------------------------	--	---	-------------------------------	----------------------------------	-------------------------

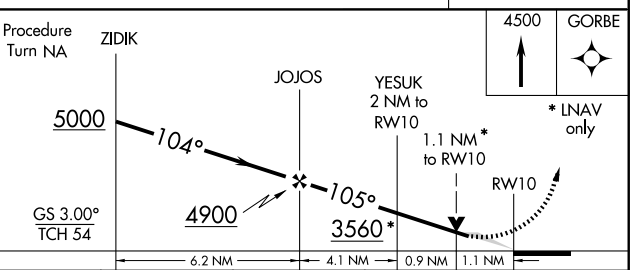
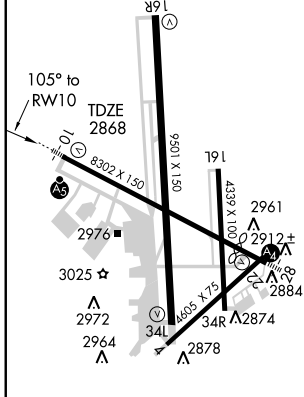
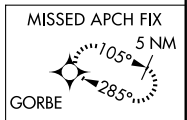


SC-3, 22 OCT 2009 to 19 NOV 2009

SC-3, 22 OCT 2009 to 19 NOV 2009

ELEV 2871	<b>D</b>
-----------	----------

Procedure NA for arrivals at PIZON via V68 northwest bound and for arrivals at NOTES via V94-546 westbound.



CATEGORY	A	B	C	D
LPV DA		3118/24	250 (300-½)	
LNAV/VNAV DA		3269/50	401 (400-1)	
LNAV MDA		3260/24	392 (400-½)	3260/50 392 (400-1)
CIRCLING	3340-1	469 (500-1)	3340-1½ 469 (500-1½)	3440-2 569 (600-2)

REIL Rwy 34L  
 MIRL Rwy 4-22 and 16L-34R  
 HIRL Rwy 10-28 and 16R-34L