

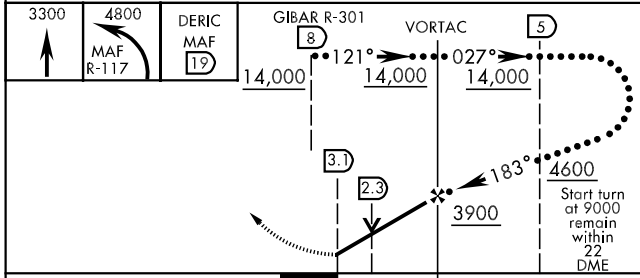
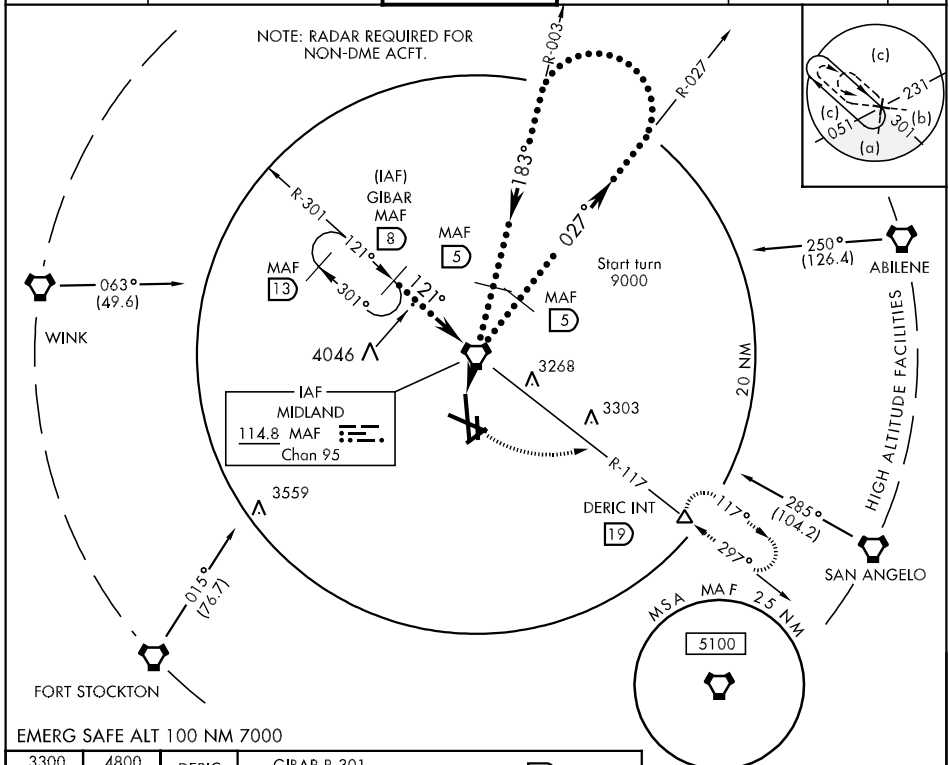
MIDLAND, TEXAS

HI-VOR/DME or TACAN RWY 16R

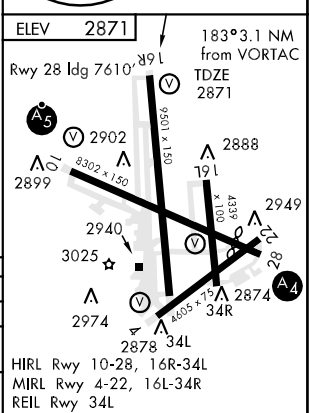
VORTAC MAF 114.8 Chan 95	APCH CRS 183°	Rwy ldg TDZE 9501 2871 Arpt Elev 2871	JAL-258 [USAF]	MIDLAND INTL (KMAF)
----------------------------------------------	-------------------------	---------------------------------------------------------------------	----------------	---------------------

MISSED APPROACH: Climb to 3300 then climbing left turn to 4800 via R-117 to DERIC INT/MAF 19 DME and hold.

ATIS ★ 126.8 235.975	MIDLAND APP CON 124.6 290.4	MIDLAND TOWER ★ 118.70 273.45	GND CON 121.9 348.6	CLNC DEL 118.05 317.65	ASR
--------------------------------	---------------------------------------	-----------------------------------------	-------------------------------	----------------------------------	-----



CATEGORY	C	D	E
S-16R	3260-1 389 (400-1)	3260-1¼ 389 (400-1¼)	
CIRCLING	3340-1½ 469 (500-1½)	3440-2 569 (600-2)	3600-2½ 729 (800-2½)
S-ASR 16R	3280-1¼ 409 (500-1¼)		3280-1½ 409 (500-1½)



MIDLAND, TEXAS
Amdt 2 09183

31° 56'N-102° 12'W

MIDLAND INTL (KMAF)

HI-VOR/DME or TACAN RWY 16R

SC-3, 22 OCT 2009 to 19 NOV 2009

SC-3, 22 OCT 2009 to 19 NOV 2009