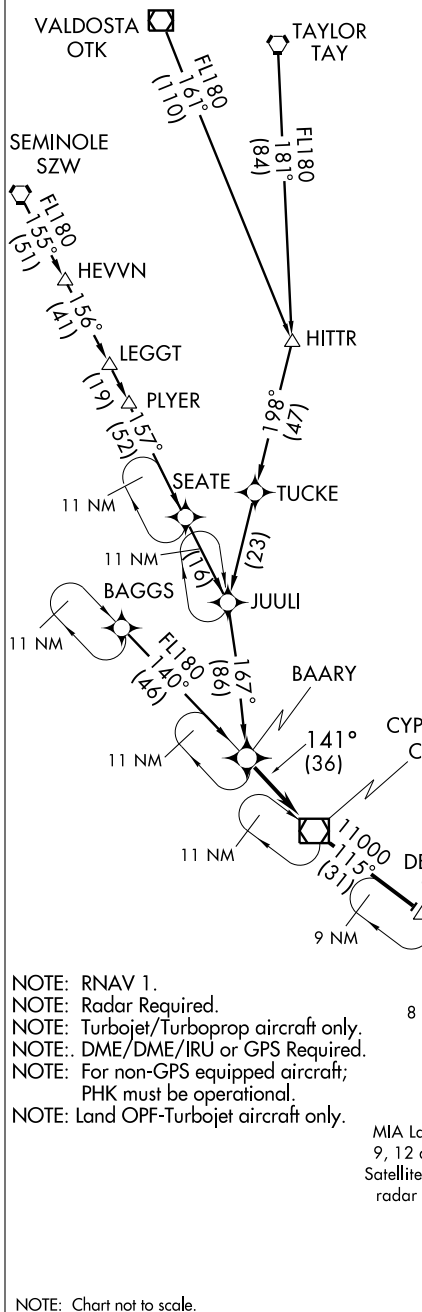


MIAMI APP CON
120.5 350.20
MIAMI INTL ATIS
119.15
KENDALL TAMiami EXECUTIVE ATIS
124.00
NORTH PERRY ATIS
135.475
OPA LOCKA ATIS
125.90



ARRIVAL ROUTE DESCRIPTION

BAGGS TRANSITION (BAGGS.SSCOT1):
SEMINOLE TRANSITION (SZW.SSCOT1):
TAYLOR TRANSITION (TAY.SSCOT1):
VALDOSTA TRANSITION (OTK.SSCOT1):

From over BAARY via 141° track to CY Y VOR/DME, thence as depicted to LECIT, then via 126° heading. Expect radar vectors.

LOST COMMUNICATIONS:
 MIA Landing East: Continue track to LECIT, intercept the Runway 8L approach.
 MIA Landing West: Continue track to LECIT, then proceed direct to JUNUR, then turn left to intercept the Runway 30 approach.

SSCOT
 MIA Landing East: Expect to cross SSCOT at 10,000 and 250 KIAS.
 MIA Landing West: Expect to cross SSCOT at 16,000 and 280 KIAS.

WALIP
 MIA Landing Runways 8 L/R, 26 L/R: Expect radar vectors prior to WALIP.

LECIT
 MIA Landing Runway 27: Expect radar vectors prior to LECIT.

RUBOE
 MIA Landing Runways 9, 12 and Landing All
 Satellite Airports: Expect radar vectors prior to RUBOE.

JUNUR
 126° heading

- NOTE: RNAV 1.
- NOTE: Radar Required.
- NOTE: Turbojet/Turboprop aircraft only.
- NOTE: DME/DME/IRU or GPS Required.
- NOTE: For non-GPS equipped aircraft; PHK must be operational.
- NOTE: Land OPF-Turbojet aircraft only.

NOTE: Chart not to scale.

SE-3, 22 OCT 2009 to 19 NOV 2009

SE-3, 22 OCT 2009 to 19 NOV 2009