

MIAMI, FLORIDA

AL-256 (FAA)

LOC/DME I-PLJ 111.35 Chan 50 (Y)	APP CRS 269°	Rwy Idg 8002 TDZE 8 Apt Elev 8
--	------------------------	---

ILS/DME RWY 27R

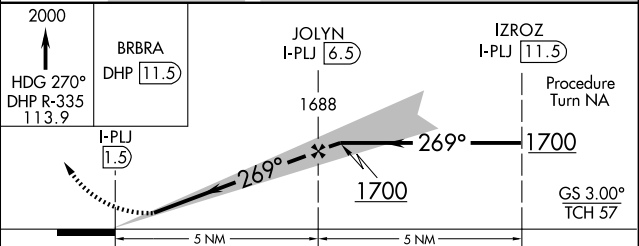
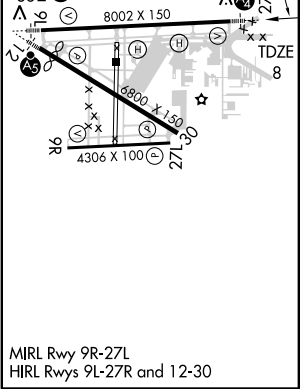
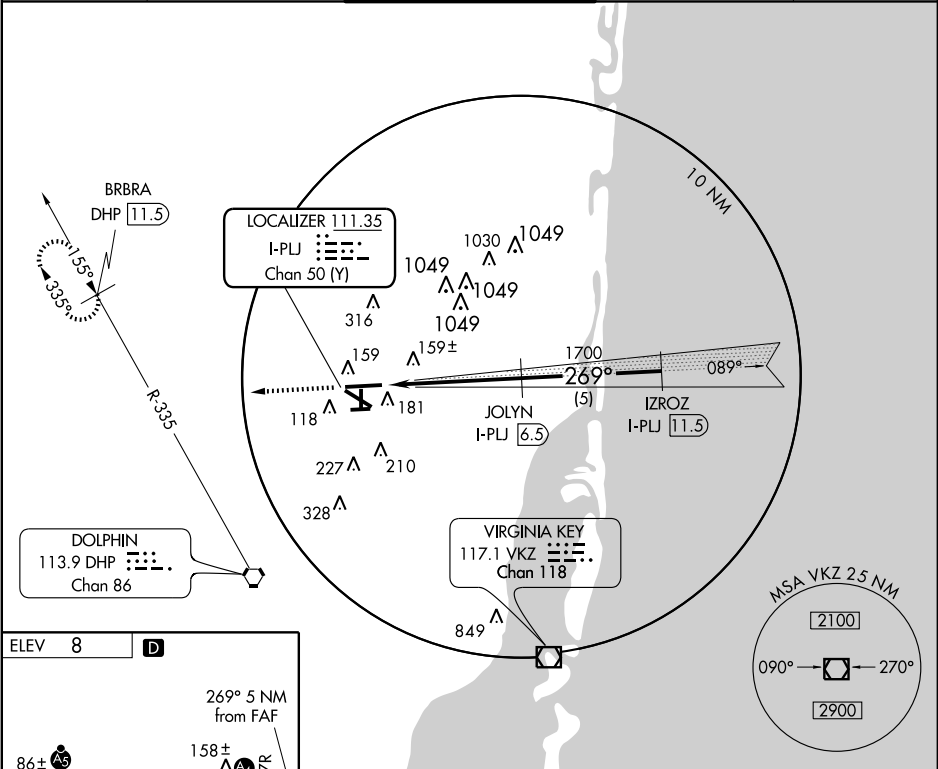
MIAMI / OPA LOCKA EXECUTIVE (OPF)

<p>▼ If local altimeter setting not received, use Miami Intl altimeter setting and increase all DH to 274 feet and MDAs 20 feet. ▲ RADAR Required. Inoperative table does not apply. Visibility reduction by helicopters NA. DME Required.</p>	<p>MALS </p>	<p>MISSED APPROACH: Climb to 2000 via heading 270° and DHP VORTAC R-335 to BRBRA/DHP 11.5 DME and hold.</p>
--	-------------------	---

ATIS 125.9	MIAMI APP CON 128.6 255.6	OPA LOCKA TOWER * 120.7(CTAF) 360.8	GND CON 121.9 336.4	CLNC DEL 119.2
----------------------	-------------------------------------	---	-------------------------------	--------------------------

SE-3, 22 OCT 2009 to 19 NOV 2009

SE-3, 22 OCT 2009 to 19 NOV 2009



CATEGORY	A	B	C	D
S-ILS 27R	265-1		257 (300-1)	
S-LOC 27R	400-1		392 (400-1)	
CIRCLING	540-1	532 (600-1)	540-1½	580-2
			532 (600-1½)	572 (600-2)

MIAMI, FLORIDA
Orig-C 09239

25°54'N - 80°17'W

ILS/DME RWY 27R

MIAMI / OPA LOCKA EXECUTIVE (OPF)