

APP CRS	Rwy Idg	<b>8002</b>
<b>089°</b>	TDZE	<b>8</b>
	Apt Elev	<b>8</b>

# GPS RWY 9L

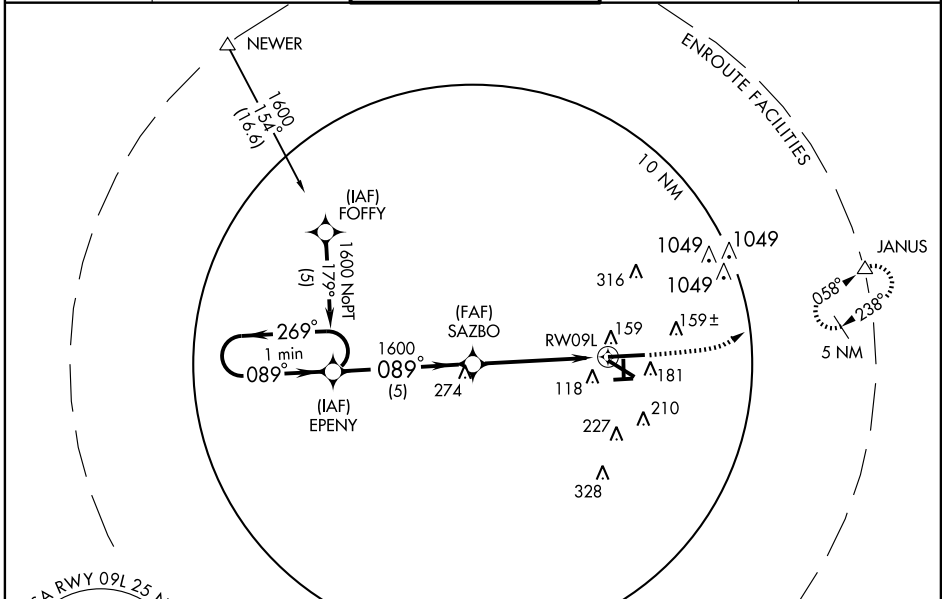
MIAMI/OPA LOCKA EXECUTIVE (OPF)

**CAUTION:** Lights on highway 0.7 miles north of airport may be mistaken for runway. For inoperative MALSR, increase S-9L Cat A/B visibility to 1 mile or S-9L Cat D visibility to 1¼. If local altimeter setting not received, use Miami Intl altimeter setting and increase all MDAs 20 feet. Visibility reduction by helicopters NA. VDP NA when using Miami Intl altimeter setting.

**MALSR**

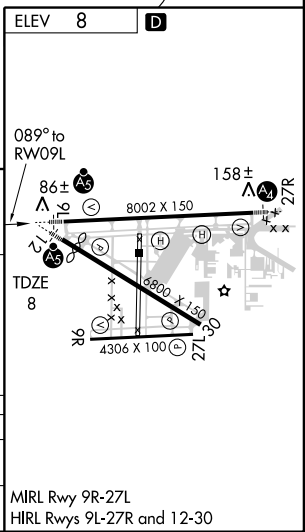
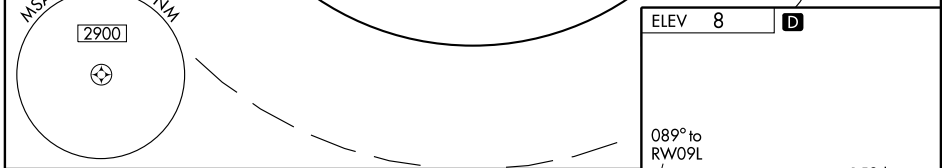
**MISSED APPROACH:** Climb to 2000 then turn left direct JANUS WP and hold.

ATIS <b>125.9</b>	MIAMI APP CON <b>128.6 255.6</b>	OPA LOCKA TOWER * <b>120.7(CTAF) 0 360.8</b>	GND CON <b>121.9 336.4</b>	CLNC DEL <b>119.2</b>
----------------------	-------------------------------------	---	-------------------------------	--------------------------



SE-3, 22 OCT 2009 to 19 NOV 2009

SE-3, 22 OCT 2009 to 19 NOV 2009



CATEGORY	A	B	C	D
S-9L	420-¾ 412 (500-¾)			420-1 412 (500-1)
CIRCLING	540-1	532 (600-1)	540-1½ 532 (600-1½)	580-2 572 (600-2)

MIRL Rwy 9R-27L  
HIRL Rwy 9L-27R and 12-30