

MERIDIAN, MISSISSIPPI

AL-254 (FAA)

# RNAV (GPS) RWY 4

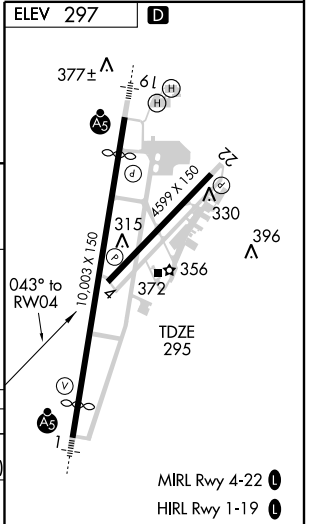
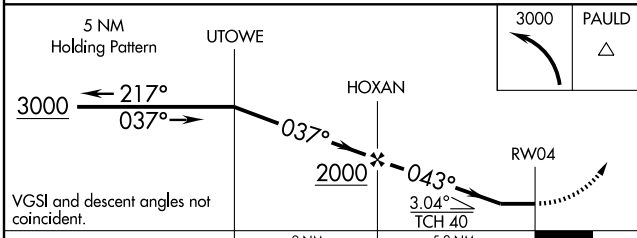
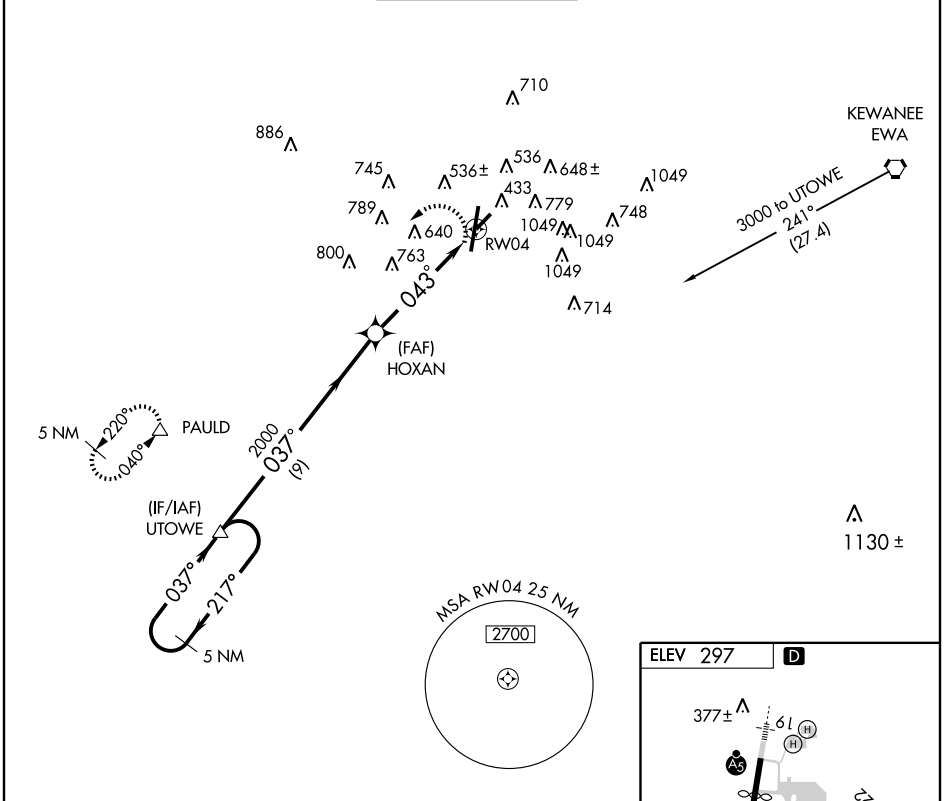
MERIDIAN/KEY FIELD (MEI)

APP CRS	Rwy Idg	<b>4599</b>
<b>043°</b>	TDZE	<b>295</b>
	Apt Elev	<b>297</b>

**▼** DME/DME RNP-0.3 NA. Circling NA southeast of Rwy 1 and 4. If local altimeter setting not received, use Hattiesburg/Laurel altimeter setting and increase all MDAs 140 feet. When VGSI inoperative, straight-in/circling Rwy 4 and circling Rwy 22 NA at night.

**MISSED APPROACH:** Climbing left turn to 3000 direct PAULD and hold.

ATIS <b>126.475 291.675</b>	MERIDIAN APP CON * <b>120.5 269.6</b>	KEY TOWER * <b>119.8 (CTAF) 0 257.8</b>	GND CON <b>121.9 348.6</b>	UNICOM <b>122.95</b>
--------------------------------	--	--	-------------------------------	-------------------------



CATEGORY	A	B	C	D	E
RNAV MDA	920-1	625 (700-1)	920-1¼ 625 (700-1¾)	920-2 625 (700-2)	920-2¼ 625 (700-2¼)
CIRCLING	920-1	623 (700-1)	920-1¼ 623 (700-1¾)	940-2 643 (700-2)	1120-3 823 (900-3)

MERIDIAN, MISSISSIPPI  
Orig 08325

32° 20'N - 088° 45'W

# MERIDIAN/KEY FIELD (MEI)

## RNAV (GPS) RWY 4

SC-4, 22 OCT 2009 to 19 NOV 2009

SC-4, 22 OCT 2009 to 19 NOV 2009