

RNAV (GPS) RWY 22

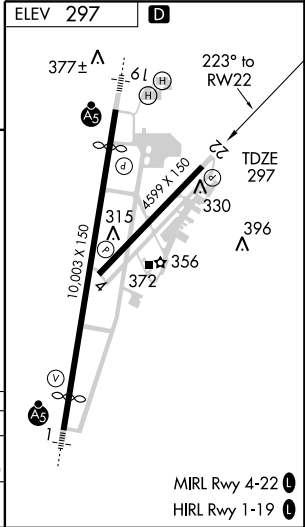
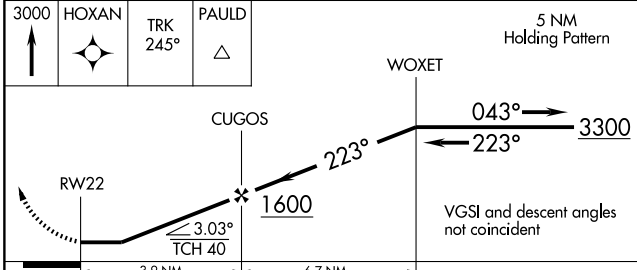
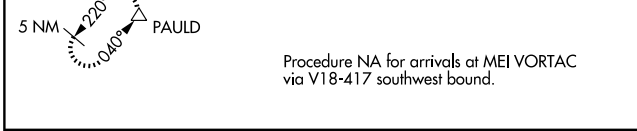
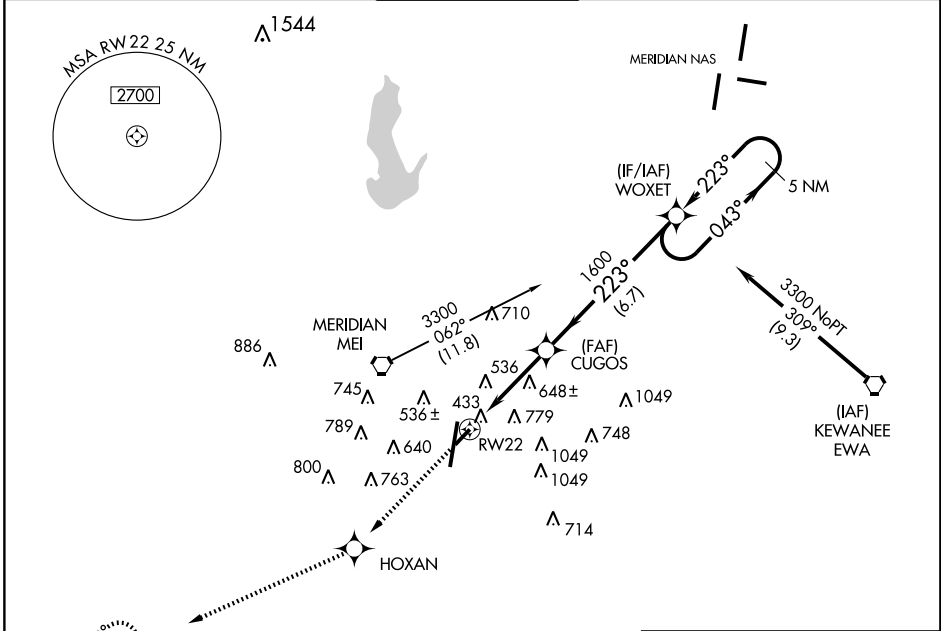
MERIDIAN/KEY FIELD (MEI)

APP CRS	Rwy Idg	4599
223°	TDZE	297
	Apt Elev	297

⚠ DME/DME RNP-0.3 NA. Circling NA southeast of runways 1 and 4.
⚠ If local altimeter setting not received, use Hattiesburg/Laurel altimeter setting and increase all MDAs 140 feet. When VGSI inoperative, straight-in/circling runway 22 NA at night.

MISSED APPROACH: Climb to 3000 direct HOXAN and via 245 track to PAULD and hold.

ATIS 126.475 291.675	MERIDIAN APP CON * 120.5 269.6	KEY TOWER * 119.8 (CTAF) 0 257.8	GND CON 121.9 348.6	UNICOM 122.95
--------------------------------	--	--	-------------------------------	-------------------------



CATEGORY	A	B	C	D	E
LNVA MDA	940-1 643 (700-1)	940-1 643 (700-1)	940-1 643 (700-1 3/4)	940-2 643 (700-2)	940-2 643 (700-2 1/4)
CIRCLING	940-1 643 (700-1)	940-1 643 (700-1)	940-1 643 (700-1 3/4)	940-2 643 (700-2)	1120-3 823 (900-3)

SC-4, 22 OCT 2009 to 19 NOV 2009

SC-4, 22 OCT 2009 to 19 NOV 2009

MIRL Rwy 4-22 **Ⓛ**
 HIRL Rwy 1-19 **Ⓛ**