

# RNAV (GPS) RWY 1

MERIDIAN/KEY FIELD (MEI)

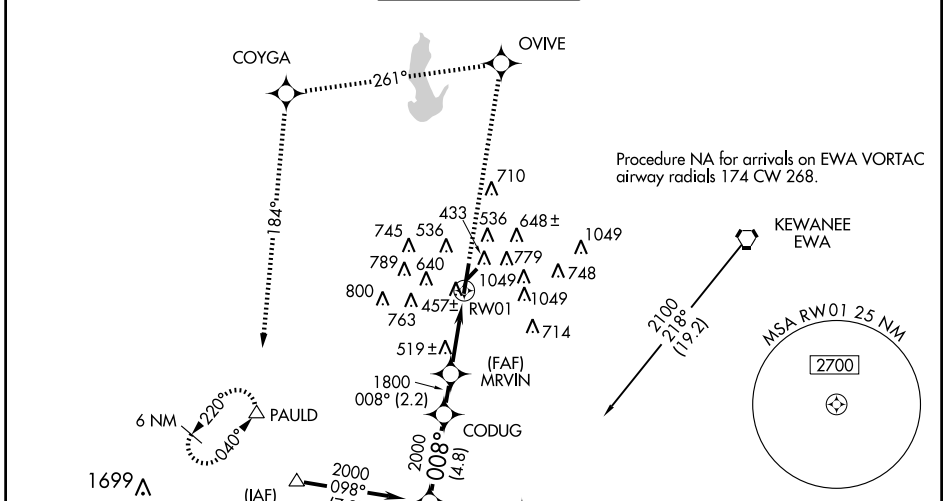
WAAS CH <b>86500</b> W01A	APP CRS <b>008°</b>	Rwy Idg TDZE <b>289</b> Apt Elev <b>297</b>	<b>9003</b>
---------------------------------	------------------------	---	-------------

**⚠** When local altimeter setting not received, use Hattiesburg/Laurel Rgnl altimeter setting and increase all DA/MDA 140 feet, LPV all Cats visibility to RVR 4000, LNAV/VNAV all Cats visibility ½ mile, LNAV Cats C, D and E visibility ½ mile, and circling Cats C and D visibility ½ mile. For inoperative MALSRS increase LPV Cat E visibility to RVR 4000, LNAV/VNAV Cat E visibility to 2¼, and LNAV Cat E visibility to 1¾. For inoperative MALSRS when using Hattiesburg/Laurel Rgnl altimeter setting increase LPV all Cats visibility to RVR 6000, LNAV/VNAV all Cats visibility to 2¾, and LNAV Cat E visibility to 2¼. VDP NA when using Hattiesburg/Laurel Rgnl altimeter setting. For uncompensated Baro-VNAV systems, LNAV/VNAV NA below -1.5°C (5°F) or above 48°C (118°F). Baro-VNAV NA when using Hattiesburg/Laurel Rgnl altimeter setting. Circling NA southeast of Rwy 1 and 4. DME/DME RNP-0.3 NA.

**MALSRS**

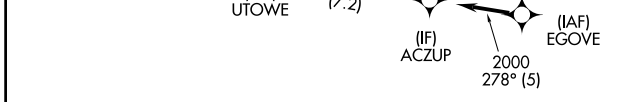
**MISSED APPROACH:**  
Climb to 3000 direct OVIVE then left turn via 261° track to COYGA and 184° track to PAULD and hold.

ATIS <b>126.475 291.675</b>	MERIDIAN APP CON * <b>120.5 269.6</b>	KEY TOWER * <b>119.8 (CTAF) 257.8</b>	GND CON <b>121.9 348.6</b>	UNICOM <b>122.95</b>
--------------------------------	--	--	-------------------------------	-------------------------



SC-4, 22 OCT 2009 to 19 NOV 2009

SC-4, 22 OCT 2009 to 19 NOV 2009



Procedure Turn NA	3000	OVIVE	COYGA	TRK 184°	PAULD
ACZUP	2000	008°	CODUG	MRVIN	* LNAV only
GS 3.00° TCH 55	4.8 NM	2.2 NM	3.1 NM	1.4 NM	
CATEGORY	A	B	C	D	E
LPV DA	489/24 200 (200-½)				
LNAV/VNAV DA	909-1¾ 620 (700-1¾)				
LNAV MDA	780/24	491 (500-½)	780/40 491 (500-¾)	780/50 491 (500-1)	780/60 491 (500-1¼)
CIRCLING	860-1 563 (600-1)	880-1 583 (600-1)	880-1½ 583 (600-1½)	940-2 643 (700-2)	1160-3 863 (900-3)

