

MELBOURNE, FLORIDA

AL-252 (FAA)

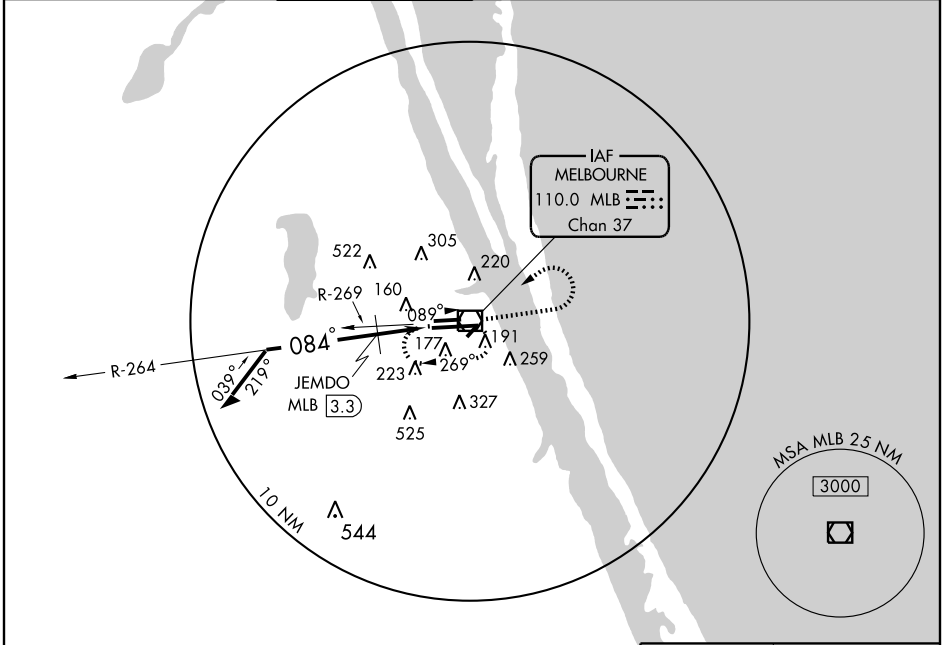
VOR/DME	MLB	APP CRS	Rwy Idg	10181
110.0		084°	TDZE	32
Chan 37			Apt Elev	33

VOR RWY 9R

MELBOURNE INTL (MLB)

	JEMDO Fix minimums: For inoperative MALSRS, increase S-9R Cat D visibility to 6000.	MISSED APPROACH: Climb to 1000, then climbing left turn to 2100 direct MLB VOR/DME and hold.

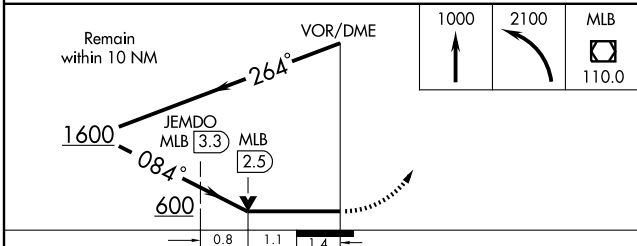
ATIS 132.55	ORLANDO APP CON 132.65 281.425	MELBOURNE TOWER ★ 118.2 (CTAF) 257.8	GND CON 121.9	CLNC DEL 121.9 132.65 * * when tower closed	UNICOM 122.95
-----------------------	--	--	-------------------------	--	-------------------------



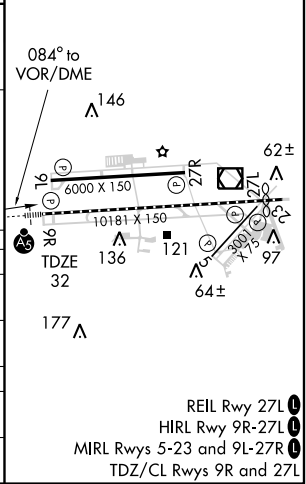
SE-3, 22 OCT 2009 to 19 NOV 2009

SE-3, 22 OCT 2009 to 19 NOV 2009

ELEV	33	D
------	-----------	----------



CATEGORY	A	B	C	D
S-9R	600/24	568 (600-½)	600/50 568 (600-1)	600/60 568 (600-1¼)
CIRCLING	600-1	567 (600-1)	600-1½ 567 (600-1½)	620-2 587 (600-2)
JEMDO FIX MINIMUMS				
S-9R	440/24	408 (500-½)	440/40 408 (500-¾)	440/50 408 (500-1)
CIRCLING	500-1 467 (500-1)	580-1 547 (600-1)	580-1½ 547 (600-1½)	620-2 587 (600-2)



MELBOURNE, FLORIDA
Amdt 20 09267

28° 06' N - 80° 39' W

MELBOURNE INTL (MLB)

VOR RWY 9R

- REIL Rwy 27L
- HIRL Rwy 9R-27L
- MIRL Rwy 5-23 and 9L-27R
- TDZ/CL Rwy 9R and 27L