

# RNAV (GPS) RWY 9R

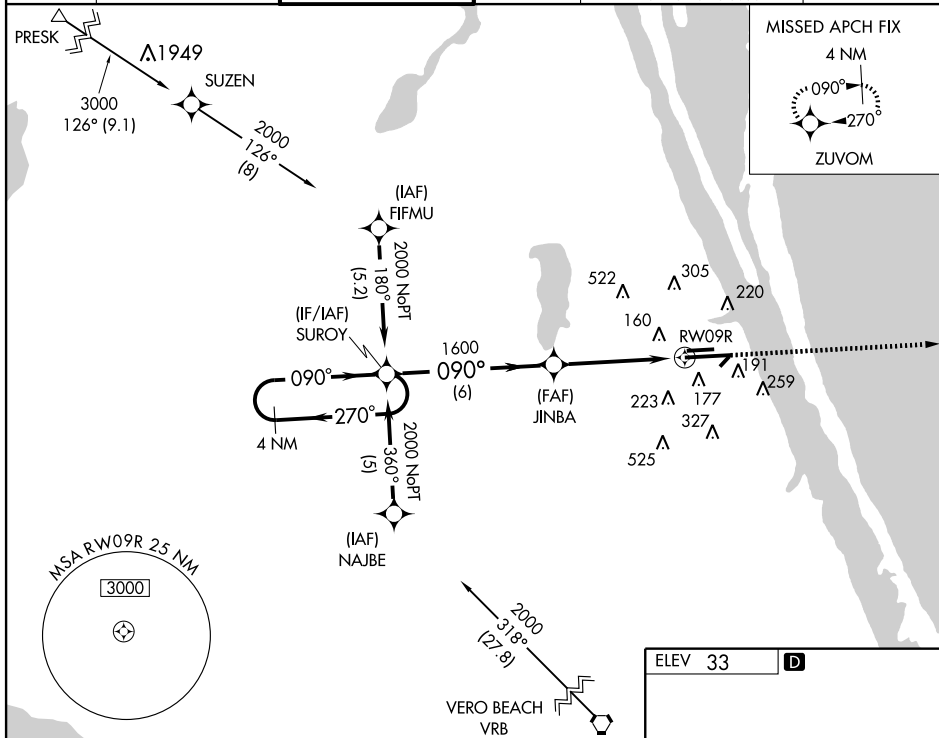
MELBOURNE INTL (MLB)

WAAS CH <b>60901</b> <b>W09B</b>	APP CRS <b>090°</b>	Rwy Idg <b>10181</b> TDZE <b>32</b> Apt Elev <b>33</b>
--	------------------------	--

**V** NA DME/DME RNP-0.3 NA. Baro-VNAV NA below -16° C (4° F). For inoperative MALSRL, increase LNAV Cat D visibility to 1/4.

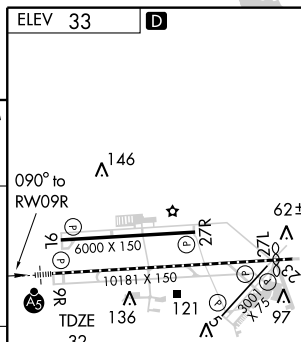
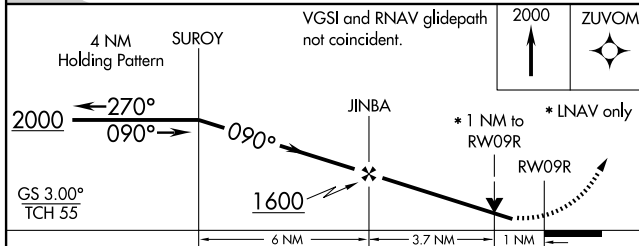
**MALSRL** MISSED APPROACH: Climb to 2000 direct ZUWOM and hold.

ATIS <b>132.55</b>	ORLANDO APP CON <b>132.65 281.425</b>	MELBOURNE TOWER * <b>118.2 (CTAF) 257.8</b>	GND CON <b>121.9</b>	CLNC DEL <b>121.9 132.65*</b> * when tower closed	UNICOM <b>122.95</b>
-----------------------	--	--	-------------------------	---	-------------------------



SE-3, 22 OCT 2009 to 19 NOV 2009

SE-3, 22 OCT 2009 to 19 NOV 2009



CATEGORY	A	B	C	D
LPV DA	310/24 278 (300-1/2)			
LNAV/VNAV DA	400/40 368 (400-3/4)			
LNAV MDA	400/24 368 (400-1/2)			400/50 368 (400-1)
CIRCLING	500-1/4 467 (500-1/4)	580-1/4 547 (600-1/4)	580-1/2 547 (600-1/2)	620-2 587 (600-2)