

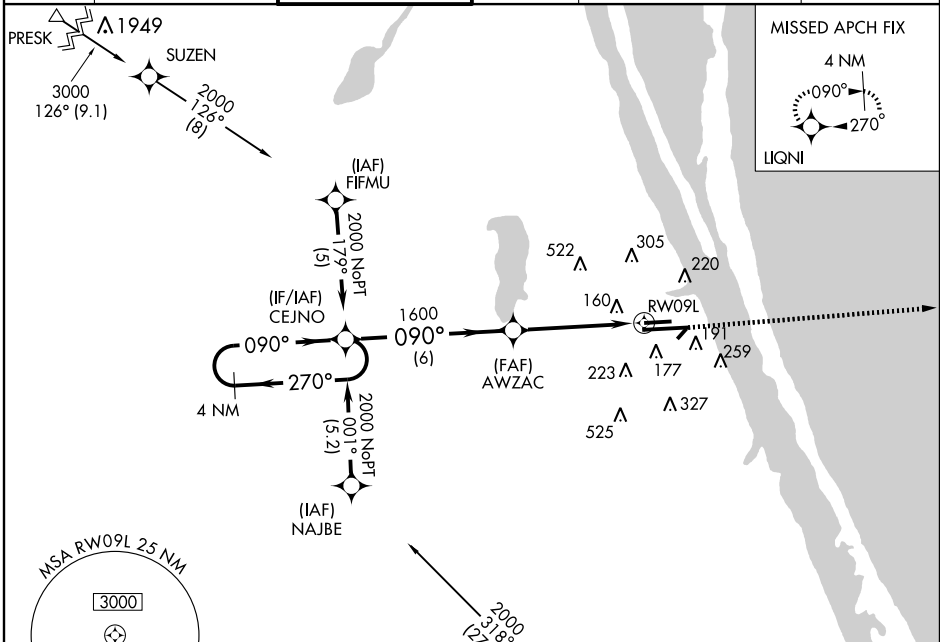
RNAV (GPS) RWY 9L

MELBOURNE INTL (MLB)

WAAS CH 65601 W09A	APP CRS 090°	Rwy Idg TDZE 33 Apt Elev 33	6000
--	------------------------	---	-------------

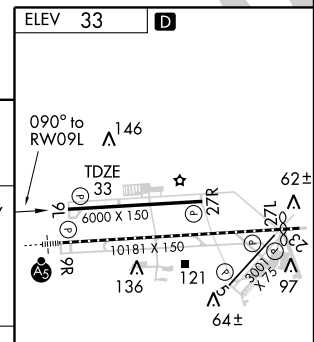
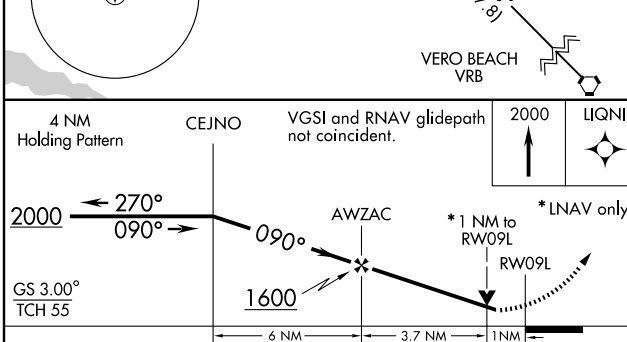
Baro-VNAV NA below -16° C (4° F) DME/DME RNP-0.3 NA		MISSED APPROACH: Climb to 2000 direct LIQNI and hold.			
--	--	---	--	--	--

ATIS 132.55	ORLANDO APP CON 132.65 281.425	MELBOURNE TOWER * 118.2 (CTAF) 257.8	GND CON 121.9	CLNC DEL 121.9 132.65* * when tower closed	UNICOM 122.95
-----------------------	--	--	-------------------------	---	-------------------------



SE-3, 22 OCT 2009 to 19 NOV 2009

SE-3, 22 OCT 2009 to 19 NOV 2009



CATEGORY	A	B	C	D
LPV DA		310-1	277 (300-1)	
LNAV/VNAV DA		420-1¼	387 (400-1¼)	
LNAV MDA		400-1	367 (400-1)	400-1¼ 367 (400-1¼)
CIRCLING	500-1¼ 467 (500-1¼)	580-1¼ 547 (600-1¼)	580-1½ 547 (600-1½)	620-2 587 (600-2)

