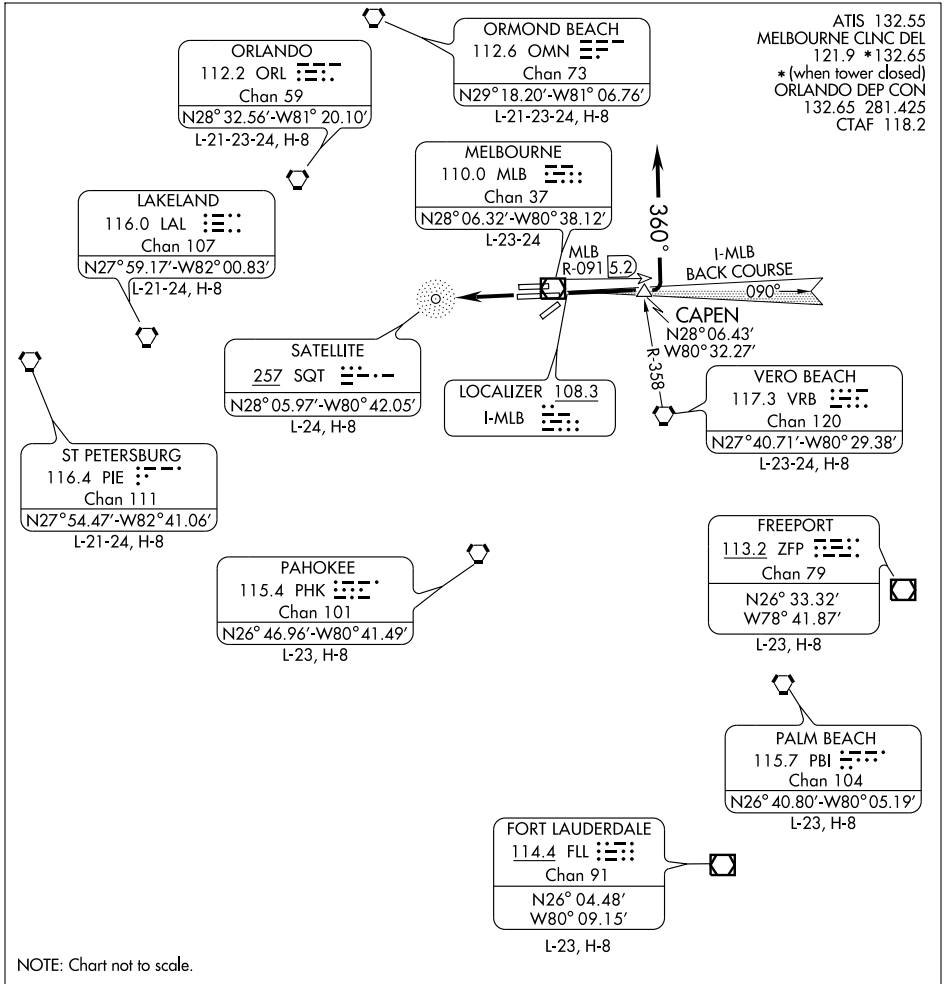


MELBOURNE THREE DEPARTURE



SE-3, 22 OCT 2009 to 19 NOV 2009

SE-3, 22 OCT 2009 to 19 NOV 2009

NOTE: Chart not to scale.

DEPARTURE ROUTE DESCRIPTION

TAKE-OFF RUNWAY 9R: Fly runway heading until the CAPEN INT then turn left heading 360°. Thence....

TAKE-OFF RUNWAY 27L: Fly runway heading. Thence....

.... All aircraft expect radar vectors to join assigned route. Maintain 5,000 feet or assigned altitude. Expect clearance to filed altitude/flight level 10 minutes after departure.