

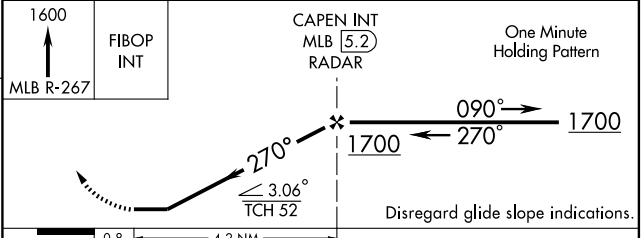
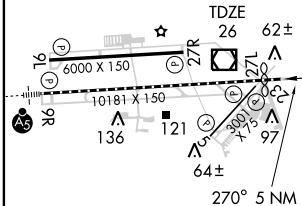
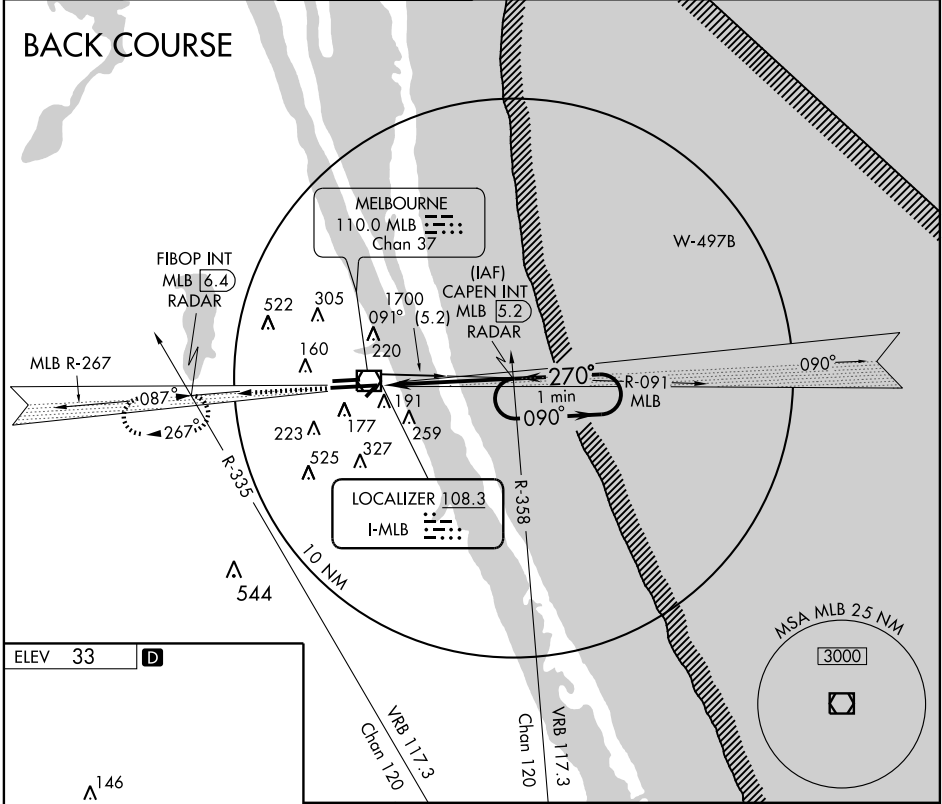
LOC BC RWY 27L

MELBOURNE INTL (MLB)

LOC I-MLB	APP CRS	Rwy Idg	9481
108.3	270°	TDZE	26
		Apt Elev	33

▼ RADAR or DME REQUIRED		MISSED APPROACH: Climb to 1600 via MLB VOR/DME R-267 to FIBOP INT/6.4 DME/RADAR and hold.			
--------------------------------	--	---	--	--	--

ATIS	ORLANDO APP CON	MELBOURNE TOWER ★	GND CON	CLNC DEL	UNICOM
132.55	132.65 281.425	118.2(CTAF) 257.8	121.9	121.9 132.65 * * when tower closed	122.95



Knots	60	90	120	150	180
Min:Sec	4:12	2:48	2:06	1:41	1:24

CATEGORY	A	B	C	D
S-27L	520-1 494 (500-1)		520-1¼ 494 (500-1¼)	520-1½ 494 (500-1½)
CIRCLING	520-1 487 (500-1)	580-1 547 (600-1)	580-1½ 547 (600-1½)	620-2 587 (600-2)

SE-3, 22 OCT 2009 to 19 NOV 2009

SE-3, 22 OCT 2009 to 19 NOV 2009