

CEDAR RAPIDS, IOWA

AL-250 (FAA)

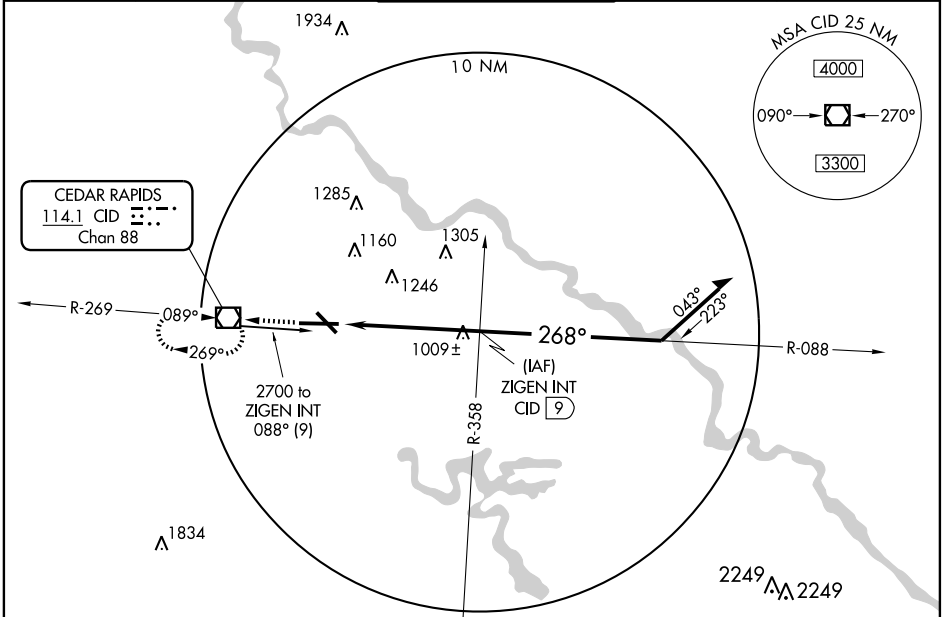
VOR RWY 27

CEDAR RAPIDS/ THE EASTERN IOWA (CID)

VOR/DME CID 114.1 Chan 88	APP CRS 268°	Rwy Idg 8175 TDZE 862 Apt Elev 869
---	------------------------	---

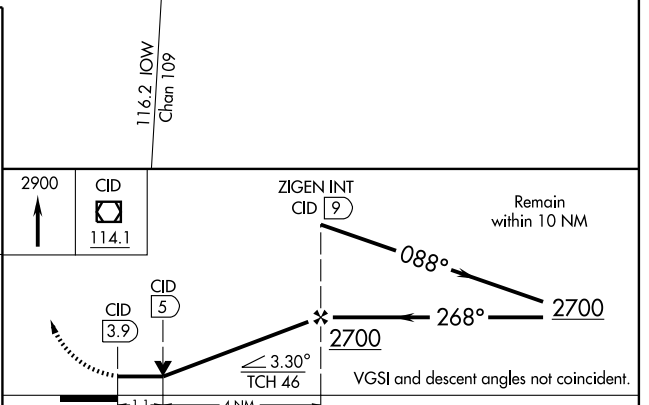
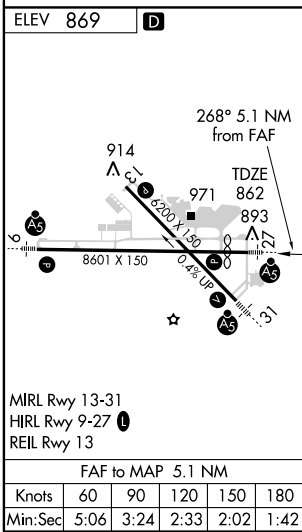
<p>⚠ If local altimeter setting not received, use Iowa City altimeter setting and increase all MDAs 80 feet.</p> <p>⚠ For inoperative MALSRS increase S-27 Cat. D visibility to RVR 6000. VDP NA with Iowa City altimeter setting.</p>	<p>MALSRS</p>	<p>MISSED APPROACH: Climb to 2900 direct CID VOR/DME and hold, continue climb-in-hold to 2900.</p>
--	---------------	--

ATIS 124.15	CEDAR RAPIDS APP CON * 119.7 266.8	CEDAR RAPIDS TOWER * 118.7 (CTAF) 0 266.8	GND CON 121.6	CLNC DEL 125.45
-----------------------	--	---	-------------------------	---------------------------



NC-3, 22 OCT 2009 to 19 NOV 2009

NC-3, 22 OCT 2009 to 19 NOV 2009



CATEGORY	A	B	C	D
S-27	1260/24 398 (400-1/2)			1260/50 398 (400-1)
CIRCLING	1280-1 411 (500-1)	1320-1 451 (500-1)	1320-1 1/2 451 (500-1 1/2)	1420-2 551 (600-2)

CEDAR RAPIDS, IOWA
Amdt 13 08325

CEDAR RAPIDS/ THE EASTERN IOWA (CID)
VOR RWY 27

41°53'N-91°43'W