

CEDAR RAPIDS, IOWA

AL-250 (FAA)

WAAS Chan 77503 W31A	APP CRS 314°	Rwy ldg TDZE Apt Elev	6200 861 869
-----------------------------------	------------------------	-----------------------------	---

RNAV (GPS) RWY 31

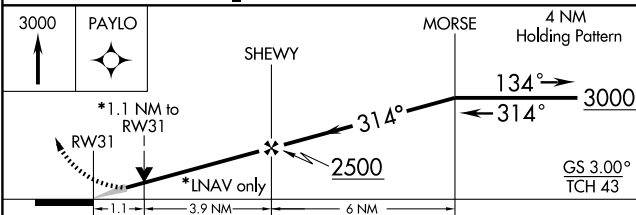
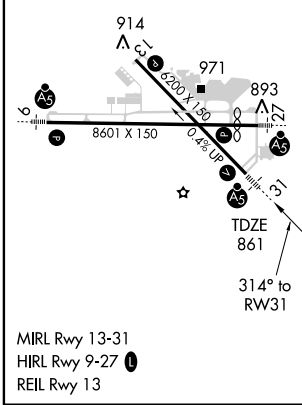
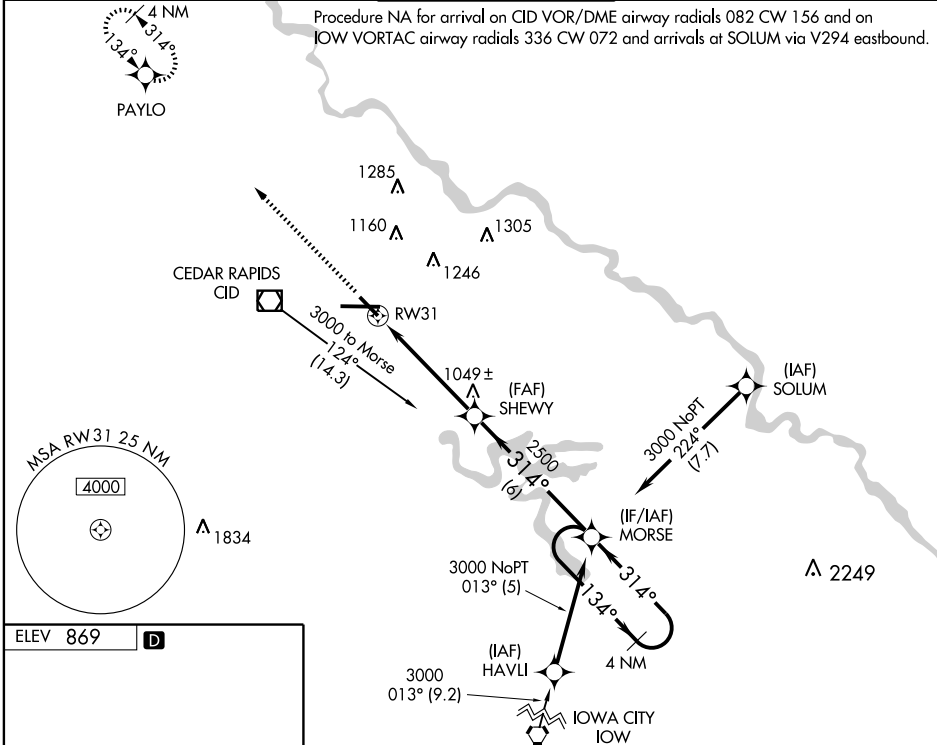
CEDAR RAPIDS/ THE EASTERN IOWA (CID)

Baro-VNAV NA below -16°C (4°F).
DME/DME RNP- 0.3 NA.
Straight in minimums NA at night when control tower closed.
For inoperative MALS increase LNAV/VNAV CAT D visibility to 1 and LNAV CAT D visibility to 1½ mile.



MISSED APPROACH: Climb to 3000 direct PAYLO and hold.

ATIS 124.15	CEDAR RAPIDS APP CON * 119.7 266.8	CEDAR RAPIDS TOWER * 118.7 (CTAF) 0 266.8	GND CON 121.6	CLNC DEL 125.45
-----------------------	--	---	-------------------------	---------------------------



CATEGORY	A	B	C	D
LPV DA	1120-½ 259 (300-½)			
LNAV/VNAV DA	1140-½ 279 (300-½)			1140-¾ 279 (300-¾)
LNAV MDA	1240-½ 379 (400-½)			1240-1 379 (400-1)
CIRCLING	1280-1 411 (500-1)	1320-1 451 (500-1)	1320-1½ 451 (500-1½)	1420-2 551 (600-2)

CEDAR RAPIDS, IOWA
Amdt 1 08325

CEDAR RAPIDS/ THE EASTERN IOWA (CID) RNP (GPS) RWY 31

41°53'N-91°43'W

NC-3, 22 OCT 2009 to 19 NOV 2009

NC-3, 22 OCT 2009 to 19 NOV 2009