

CEDAR RAPIDS, IOWA

AL-250 (FAA)

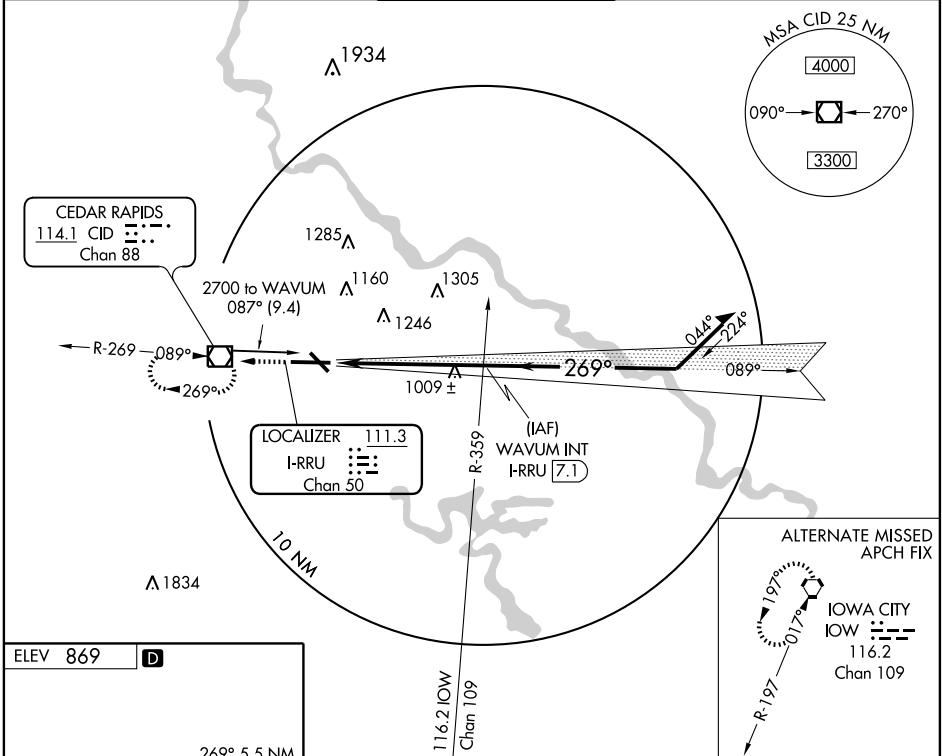
LOC/DME I-RRU <b>111.3</b> Chan 50	APP CRS <b>269°</b>	Rwy Idg TDZE <b>8175</b> <b>862</b> Apt Elev <b>869</b>
--	------------------------	--

# ILS or LOC RWY 27

CEDAR RAPIDS/ THE EASTERN IOWA (CID)

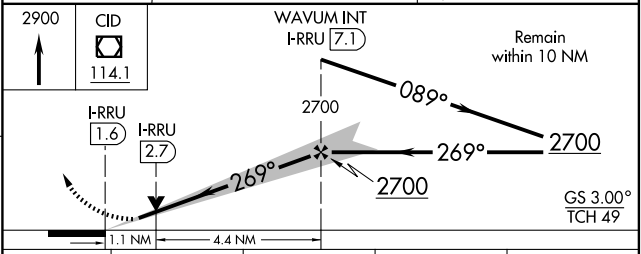
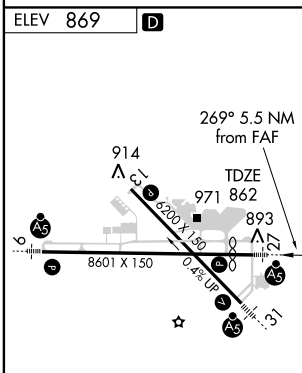
<b>⚠</b> If local altimeter setting not received, use Iowa City altimeter setting and increase all DAs/MDAs 80 feet. VDP NA when using Iowa City altimeter setting.	MALSR 	MISSED APPROACH: Climb to 2900 direct CID VOR/DME and hold, continue climb-in-hold to 2900.
---	-----------	---

ATIS <b>124.15</b>	CEDAR RAPIDS APP CON* <b>119.7 266.8</b>	CEDAR RAPIDS TOWER* <b>118.7 (CTAF) 266.8</b>	GND CON <b>121.6</b>	CLNC DEL <b>125.45</b>
-----------------------	---	--	-------------------------	---------------------------



NC-3, 22 OCT 2009 to 19 NOV 2009

NC-3, 22 OCT 2009 to 19 NOV 2009



MIRL Rwy 13-31 HIRL Rwy 9-27 REIL Rwy 13	FAF to MAP 5.5 NM				
Knots	60	90	120	150	180
Min:Sec	5:30	3:40	2:45	2:12	1:50
CATEGORY	A	B	C	D	
S-ILS 27	1062/24 200 (200-½)				
S-LOC 27	1260/24 398 (400-½)			1260/40 398 (400-¾)	
CIRCLING	1280-1 411 (500-1)	1320-1 451 (500-1)	1320-1½ 451 (500-1½)	1420-2 551 (600-2)	

CEDAR RAPIDS, IOWA  
Amdt 6 08325

# ILS or LOC RWY 27

CEDAR RAPIDS/ THE EASTERN IOWA (CID)

41°53'N-91°43'W