

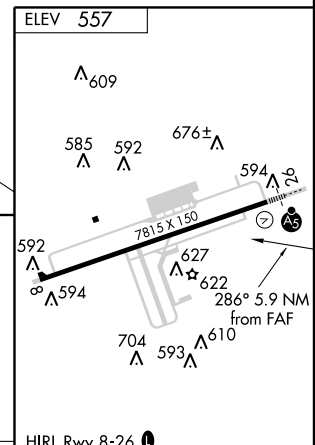
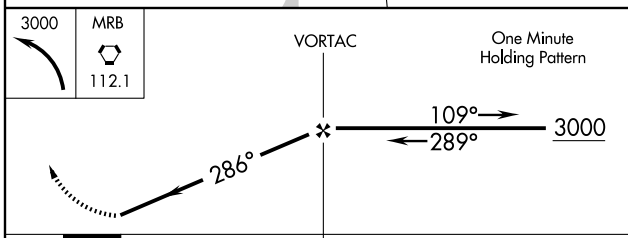
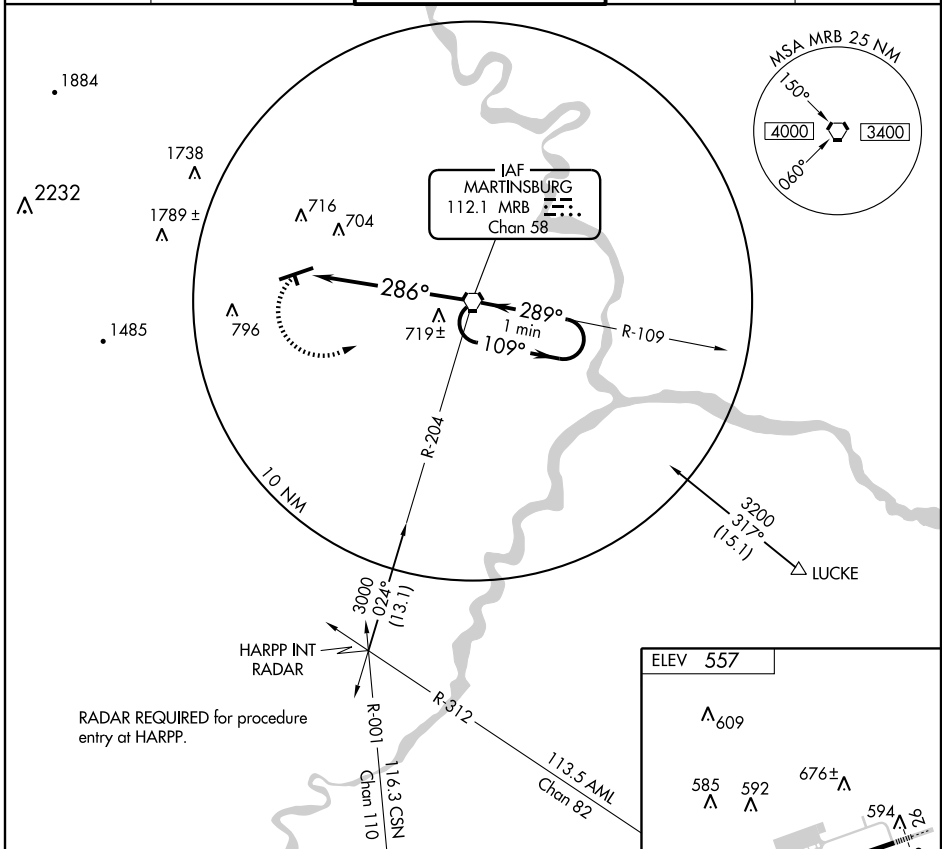
VORTAC MRB 112.1 Chan 58	APP CRS 286°	Rwy Idg TDZE Apt Elev	N/A N/A 557
--	------------------------	-----------------------------	--

MARTINSBURG/
EASTERN WEST VIRGINIA RGNL/SHEPHERD FIELD (MRB) **VOR-A**

When local altimeter setting not received, use Hagerstown altimeter setting and increase all MDAs 80 feet and Cat C visibility 1/4 mile.

MISSED APPROACH: Climbing left turn to 3000 direct MRB VORTAC and hold, continue climb in hold to 3000.

ASOS 119.925	POTOMAC APP CON 126.1 338.25	MARTINSBURG TOWER * 124.3 (CTAF) 236.6	GND CON 121.8 275.8	UNICOM 122.95
------------------------	--	--	-------------------------------	-------------------------



CATEGORY	CIRCLING					FAF to MAP 5.9 NM					
	A	B	C	D	E	Knots	60	90	120	150	180
CIRCLING	1020 - 1 463 (500-1)	1080 - 1 523 (600-1)	1080 - 1½ 523 (600-1½)	1120 - 2 563 (600-2)	2140 - 3 1583 (1600-3)	Min:Sec	5:54	3:56	2:57	2:22	1:58

NE-4, 22 OCT 2009 to 19 NOV 2009

NE-4, 22 OCT 2009 to 19 NOV 2009