

MARTINSBURG, WEST VIRGINIA

AL-249 (FAA)

WAAS CH <b>53609</b> <b>W26A</b>	APP CRS <b>259°</b>	Rwy Idg <b>7815</b> TDZE <b>548</b> Apt Elev <b>557</b>
--	------------------------	---

MARTINSBURG/  
EASTERN WEST VIRGINIA RGNL/SHEPHERD FIELD (MRB)

# RNAV (GPS) RWY 26

Baro-VNAV NA when using Hagerstown altimeter setting. DME/DME RNP-0.3 NA. For uncompensated Baro-VNAV systems, LNAV/VNAV NA below -16°C (4°F) or above 48°C (118°F). VDP NA when using Hagerstown altimeter setting.

When local altimeter setting not received, use Hagerstown altimeter setting and increase all DA 71 feet and MDA 80 feet, increase LNAV/VNAV all Cats visibility to 2 mile, LNAV Cat C, D, E to ¾ mile and Circling Cat C to 1 ¾ mile.

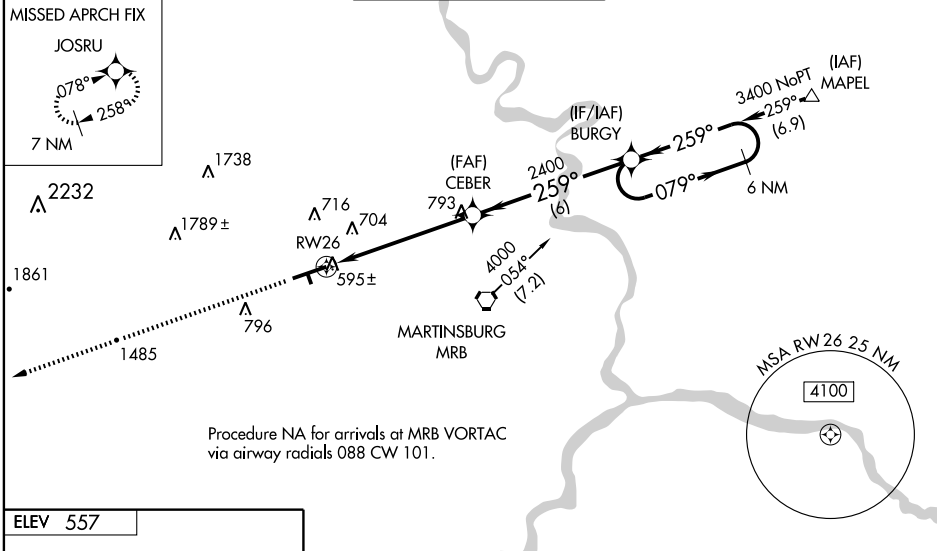
For inoperative MALSRS increase LPV Cat E visibility to ¾ mile, LNAV/VNAV Cat E to 2 ¼ mile, LNAV Cat E to 1 ½ mile. For inoperative MALSRS when using Hagerstown altimeter setting increase LPV all Cats visibility to 1 mile, LNAV/VNAV Cat E visibility to 2 ½ mile and LNAV Cat E visibility to 1 ¾ mile.

MALSRS



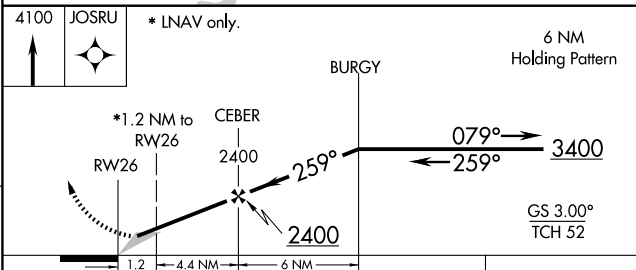
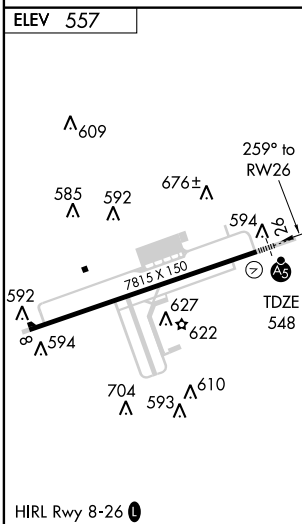
MISSED APPROACH:  
Climb to 4100 direct  
JOSRU and hold.

ASOS <b>119.925</b>	POTOMAC APP CON <b>126.1 338.25</b>	MARTINSBURG TOWER * <b>124.3 (CTAF) 236.6</b>	GND CON <b>121.8 275.8</b>	UNICOM <b>122.95</b>
------------------------	--	--	-------------------------------	-------------------------



NE-4, 22 OCT 2009 to 19 NOV 2009

NE-4, 22 OCT 2009 to 19 NOV 2009



CATEGORY	A	B	C	D	E
LPV DA	798 - ½		250 (300-½)		
LNAV/VNAV DA	1213 - 1¾		665 (700-1¾)		
LNAV MDA	980 - ½		432 (500-½)		980 - 1 432 (500-1)
CIRCLING	1020 - 1 463 (500-1)	1080 - 1 523 (600-1)	1080 - 1½ 523 (600-1½)	1120 - 2 563 (600-2)	2140 - 3 1583 (1600-3)

MARTINSBURG, WEST VIRGINIA  
Orig 08325

MARTINSBURG/EASTERN WEST VIRGINIA RGNL/SHEPHERD FIELD (MRB)  
39°24'N - 77°59'W

# RNAV (GPS) RWY 26