

MARTINSBURG, WEST VIRGINIA


AL-249 (FAA)

LOC I-EXW 108.3	APP CRS 259°	Rwy Idg TDZE Apt Elev	7815 548 557
---------------------------	------------------------	-----------------------------	---

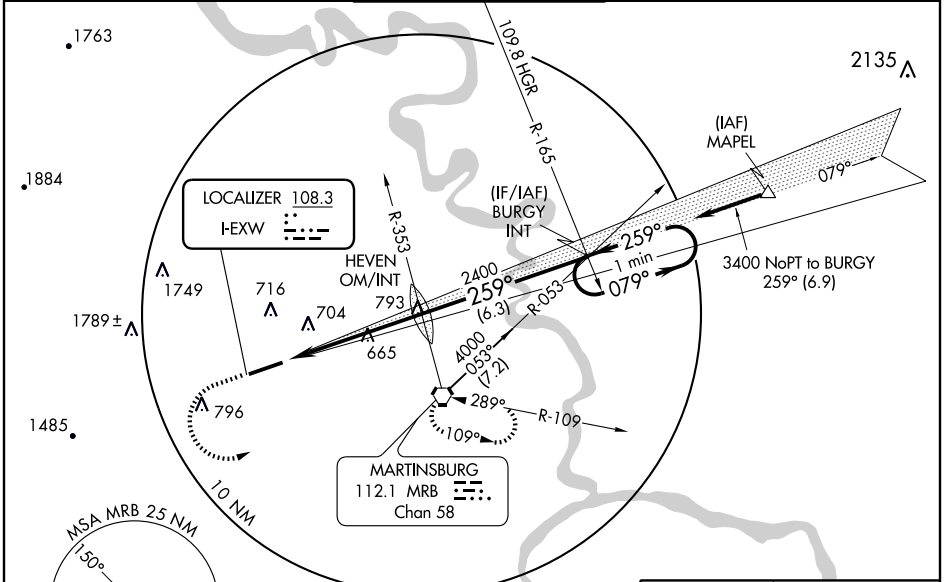
MARTINSBURG/
EASTERN WEST VIRGINIA RGNL/SHEPHERD FIELD (MRB)

ILS or LOC RWY 26

▼ For inoperative MALSRL, increase S-ILS 26 Cat E visibility to 3/4 mile and S-LOC 26 Cat E visibility to 1 1/4 mile. When local altimeter setting not received, use Hagerstown altimeter setting and increase all DA 71 feet and all MDA 80 feet and S-LOC 26 Cat C, D, E visibility 1/2 mile. For inoperative MALSRL when using Hagerstown altimeter setting increase S-ILS 26 all Cats visibility to 1 mile, S-LOC 26 Cat E visibility to 1 1/2 mile.

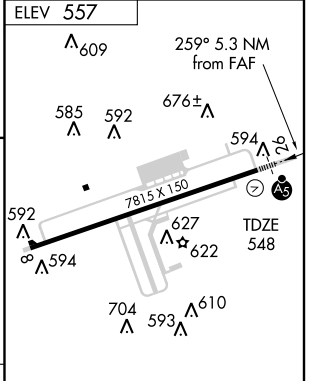
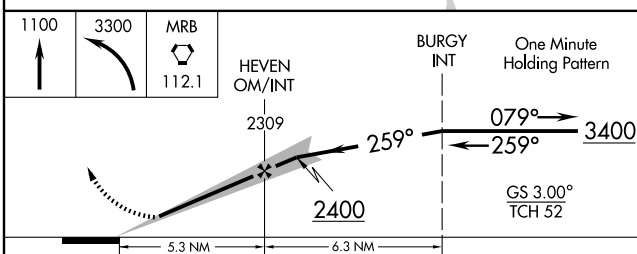
MALSRL
 MISSED APPROACH: Climb to 1100 then climbing left turn to 3300 direct MRB VORTAC and hold.

ASOS 119.925	POTOMAC APP CON 126.1 338.25	MARTINSBURG TOWER * 124.3 (CTAF) 236.6	GND CON 121.8 275.8	UNICOM 122.95
------------------------	--	---	-------------------------------	-------------------------



NE-4, 22 OCT 2009 to 19 NOV 2009

NE-4, 22 OCT 2009 to 19 NOV 2009



CATEGORY	A	B	C	D	E
S-ILS 26	748-1/2 200 (200-1/2)				
S-LOC 26	920-1/2 372 (400-1/2)		920-3/4 372 (400-3/4)		
CIRCLING	1020-1 463 (500-1)	1080-1 523 (600-1)	1080-1 1/2 523 (600-1 1/2)	1120-2 563 (600-2)	2140-3 1583 (1600-3)

HIRL Rwy 8-26 **1**

FAF to MAP 5.3 NM

Knots	60	90	120	150	180
Min:Sec	5:18	3:32	2:39	2:07	1:46

MARTINSBURG, WEST VIRGINIA
Amdt 7 09127

MARTINSBURG/EASTERN WEST VIRGINIA RGNL/SHEPHERD FIELD (MRB)
39°24'N - 77°59'W

ILS or LOC RWY 26