


RNAV (GPS) Y RWY 17

MANCHESTER (MHT)

WAAS CH 93807 W17A	APP CRS 172°	Rwy Idg 8914 TDZE 229 Apt Elev 266
--	------------------------	---

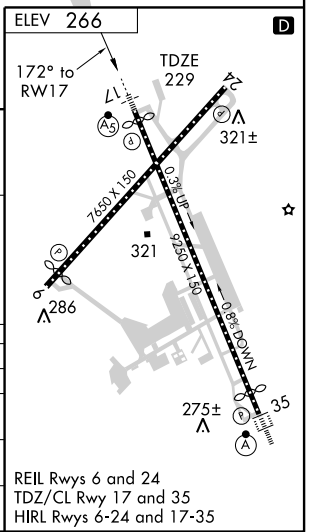
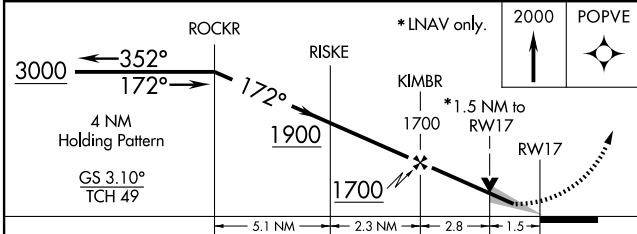
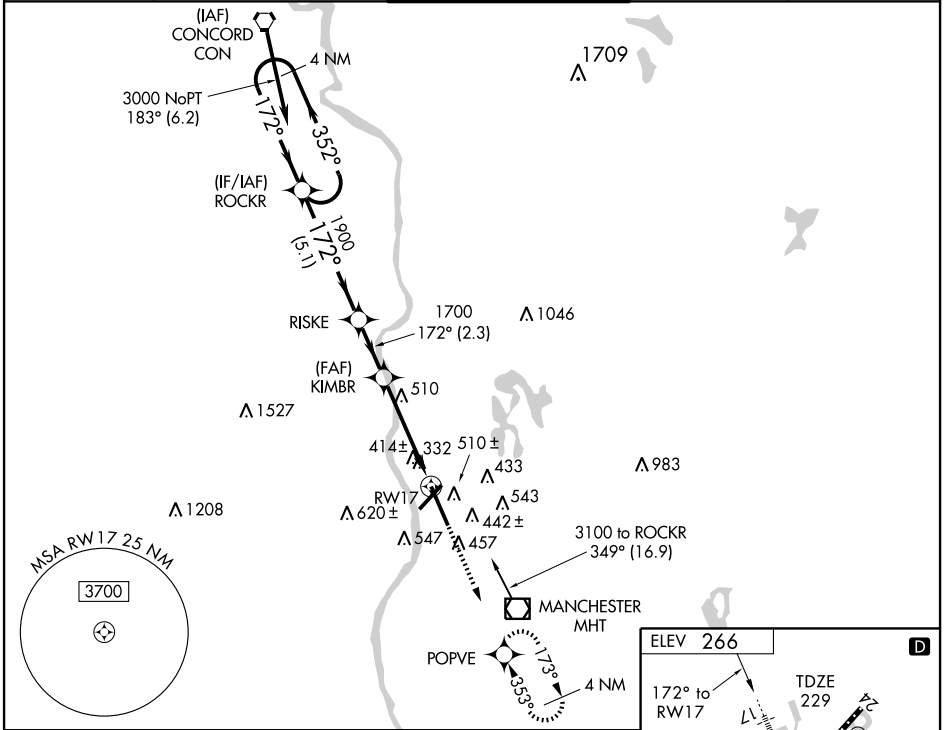
▼ For uncompensated Baro-VNAV systems, LNAV/VNAV NA below -15°C (5°F) or above 38°C (100°F). DME/DME RNP-0.3 NA. When local altimeter setting not received, use Boire Field altimeter setting and increase LPV DA to 461, LNAV/VNAV DA to 804, and all MDA 40 feet. Baro-VNAV and VDP NA when using Boire Field altimeter setting.

MALS R



MISSED APPROACH:
Climb to 2000 direct POPVE and hold.

ATIS 119.55	BOSTON APP CON 124.9 269.075	MANCHESTER TOWER 121.3 239.025	GND CON 121.9	CLNC DEL 135.9
-----------------------	--	--	-------------------------	--------------------------



CATEGORY	A	B	C	D
LPV DA		429/24	200 (200-½)	
LNAV/VNAV DA		772-1½	543 (600-1½)	
LNAV MDA	760/24	531 (500-½)	760/50 531 (500-1)	760/60 531 (500-1¼)
CIRCLING	880-1	614 (700-1)	880-1¾ 614 (700-1¾)	880-2 614 (700-2)

REIL Rwy 6 and 24
TDZ/CL Rwy 17 and 35
HIRL Rwy 6-24 and 17-35

NE-1, 22 OCT 2009 to 19 NOV 2009

NE-1, 22 OCT 2009 to 19 NOV 2009