

RNAV (RNP) Z RWY 17

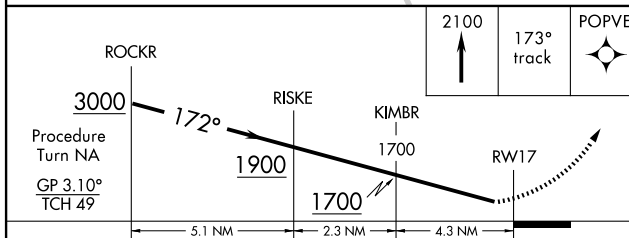
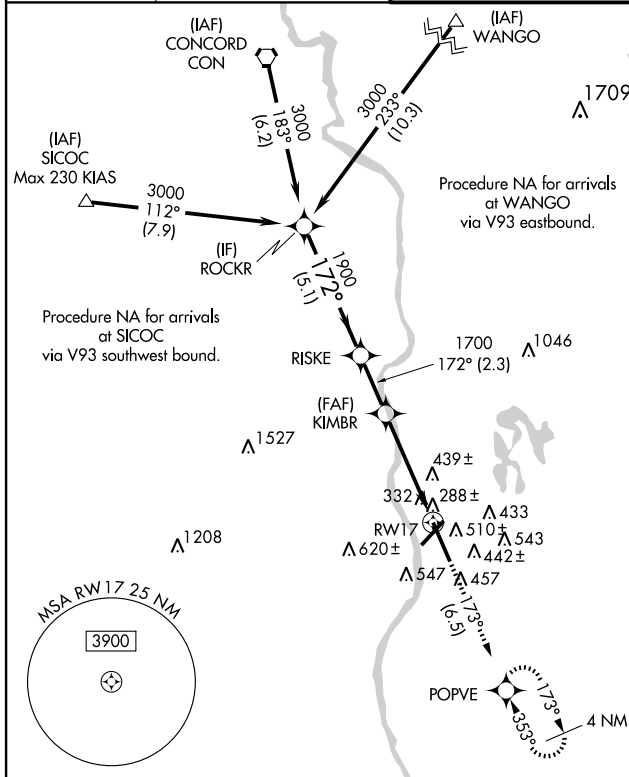
MANCHESTER (MHT)

APP CRS	Rwy Idg	8914
172°	TDZE	229
	Apt Elev	266

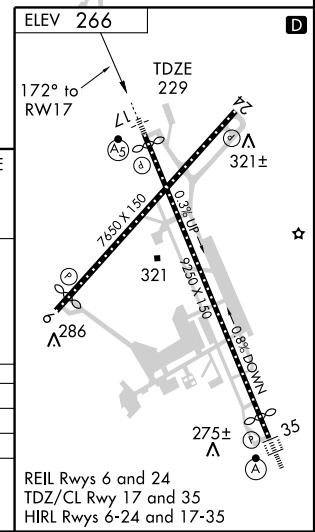
NA For uncompensated Baro-VNAV systems, procedure NA below -15°C (5°F) or above 38°C (100°F). GPS Required. For inoperative MALSR, increase RNP 0.11 visibility to RVR 6000, RNP 0.30 visibility to 2. Visibility reduction by helicopters NA.

MALSR MISSED APPROACH: Climb to 2100 via 173° track to POPVE and hold.

ATIS 119.55	BOSTON APP CON 124.9 269.075	MANCHESTER TOWER 121.3 239.025	GND CON 121.9	CLNC DEL 135.9
-----------------------	--	--	-------------------------	--------------------------



CATEGORY	A	B	C	D
RNP 0.11 DA	606/40 377 (400-¾)			
RNP 0.30 DA	810-1½ 581 (600-1½)			



SPECIAL AIRCRAFT AND AIRCREW AUTHORIZATION REQUIRED

NE-1, 22 OCT 2009 to 19 NOV 2009

NE-1, 22 OCT 2009 to 19 NOV 2009