

# RNAV (GPS) RWY 35

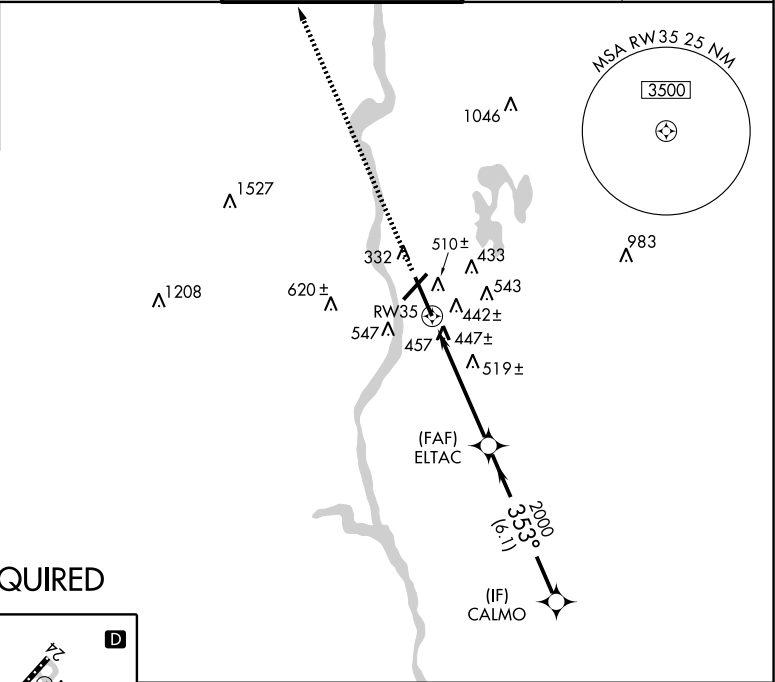
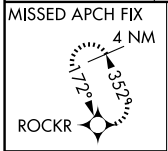
MANCHESTER (MHT)

WAAS CH <b>99614</b> <b>W35A</b>	APP CRS <b>353°</b>	Rwy Idg TDZE Apt Elev	<b>7650</b> <b>265</b> <b>266</b>
--	------------------------	-----------------------------	---

**▼** For uncompensated Baro-VNAV systems, LNAV/VNAV NA below -15°C (5°F) or above 48°C (118°F). DME/DME RNP-0.3 NA. When local altimeter setting not received, use Boire Field altimeter setting and increase all DA 32 feet and all MDA 40 feet; increase Circling Cat. D visibility to 2¼ mile. For inoperative ALSF-2, increase LNAV Cats A, B visibility to RVR 5000. VDP and Baro-VNAV NA when using Boire Field altimeter setting.

**MISSED APPROACH:**  
Climb to 3000 direct ROCKR and hold.

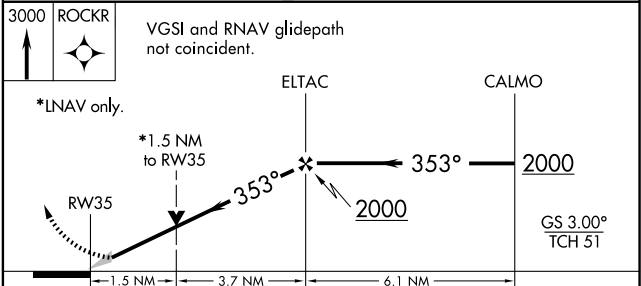
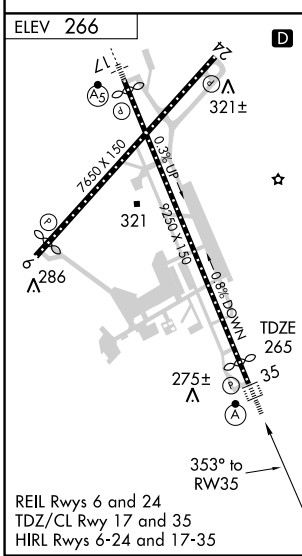
ATIS <b>119.55</b>	BOSTON APP CON <b>124.9 269.075</b>	MANCHESTER TOWER <b>121.3 239.025</b>	GND CON <b>121.9</b>	CLNC DEL <b>135.9</b>
-----------------------	--	--	-------------------------	--------------------------



NE-1, 22 OCT 2009 to 19 NOV 2009

NE-1, 22 OCT 2009 to 19 NOV 2009

## RADAR REQUIRED



CATEGORY	A	B	C	D
LPV DA	465/24 200 (200-1)			
LNAV/VNAV DA	739/60 474 (500-1¼)			
LNAV MDA	820/24	555 (600-½)	820/50 555 (600-1)	820/60 555 (600-1¼)
CIRCLING	880-1	614 (700-1)	880-1¾ 614 (700-1¾)	900-2 634 (700-2)