

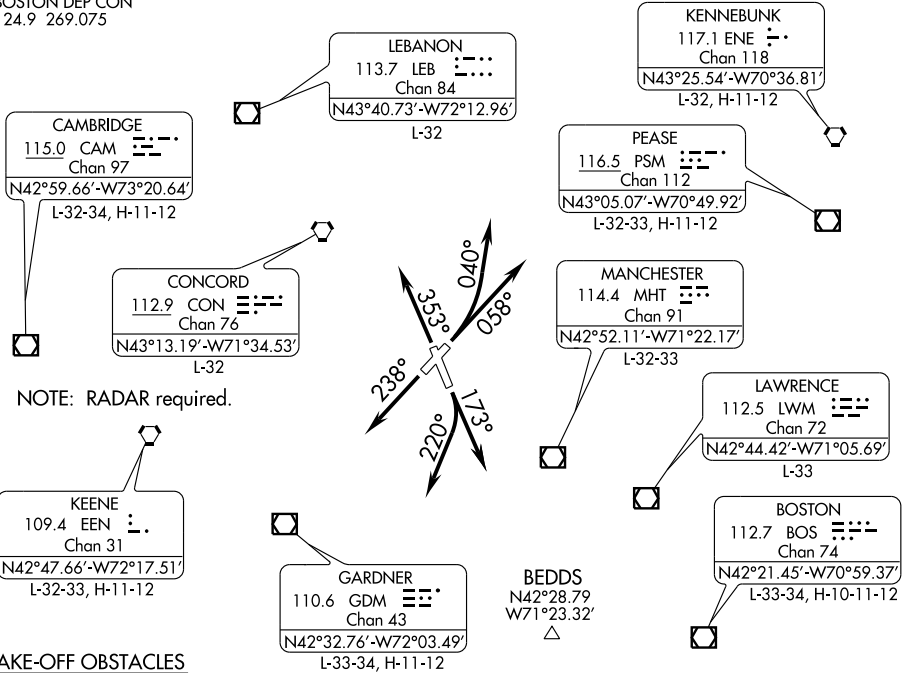
MANCHESTER FIVE DEPARTURE

ATIS 119.55
CLNC DEL
135.9
GND CON
121.9
MANCHESTER TOWER
121.3 239.025
BOSTON DEP CON
124.9 269.075

TAKE-OFF MINIMUMS:

Rwy 6, Standard with minimum climb of 206' per NM to 1000.
Rwy 17, 300-1¼ or Standard with minimum climb of 277' per NM to 600.
Rwy 24, Standard with minimum climb of 320' per NM to 800.
Rwy 35, Standard with minimum climb of 253' per NM to 2000.

NOTE: Chart not to scale.



TAKE-OFF OBSTACLES

- Rwy 6: Trees beginning 238' from DER, 266' left of centerline, up to 108' AGL/308' MSL.
Trees beginning 272' from DER, 378' right of centerline, up to 67' AGL/277' MSL.
- Rwy 17: Trees, poles and buildings beginning 761' from DER, 4' right of centerline, up to 98' AGL/433' MSL.
Sign, poles, trees, and buildings beginning 976' from DER, 2' left of centerline, up to 108' AGL/457' MSL.
- Rwy 24: Trees beginning 810' from DER, 424' left of centerline, up to 123' AGL/293' MSL.
- Rwy 35: Tree and poles beginning 719' from DER, 558' right of centerline, up to 51' AGL/281' MSL.
Pole and trees beginning 891' from DER, 527' left of centerline, up to 80' AGL/414' MSL.

DEPARTURE ROUTE DESCRIPTION

TAKE-OFF RWY 6: TURBOJET AIRCRAFT - Climbing left turn heading 040°, Thence
ALL OTHER AIRCRAFT - Climb heading 058° or as assigned by ATC, Thence

TAKE-OFF RWY 17: TURBOJET AIRCRAFT - Climbing right turn heading 220°, Thence
ALL OTHER AIRCRAFT - Climb heading 173° or as assigned by ATC, Thence

TAKE-OFF RWY 24: Climb heading 238° or as assigned by ATC, Thence

TAKE-OFF RWY 35: Climb heading 353° or as assigned by ATC, Thence

. . . . expect radar vectors to assigned Route/Navaid/Fix. Maintain 3000 or as assigned by ATC. Expect clearance to filed altitude /flight level 5 minutes after departure.

MANCHESTER FIVE DEPARTURE