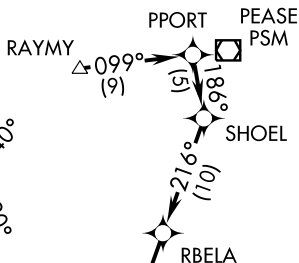


COTEE TWO DEPARTURE (RNAV)

MANCHESTER (MHT)
MANCHESTER, NEW HAMPSHIRE

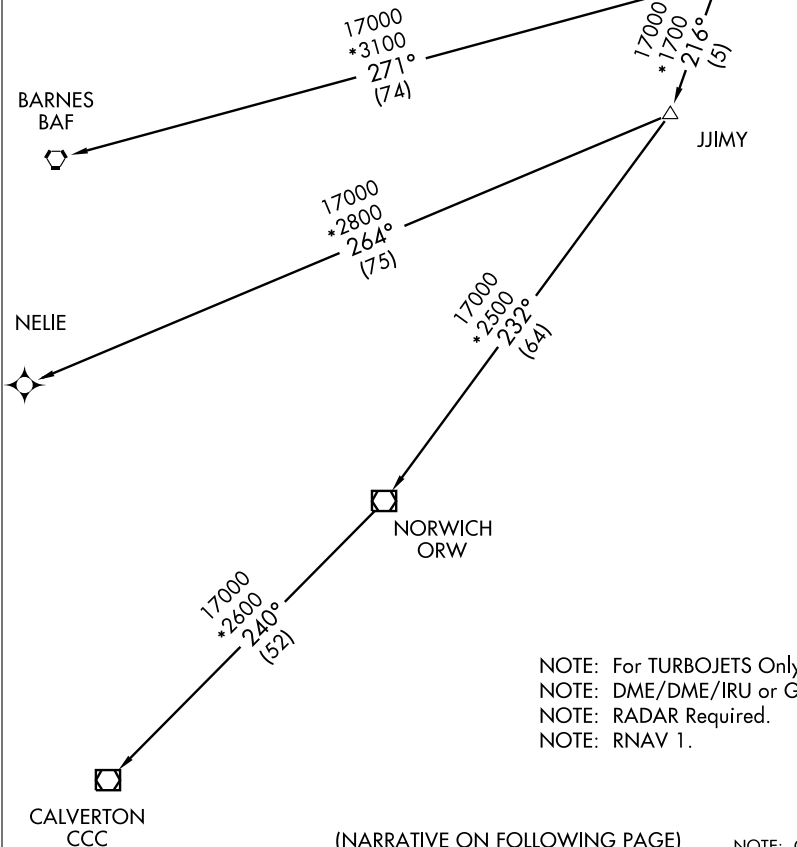
ATIS 119.55
CLNC DEL
135.9
GND CON
121.9
MANCHESTER TOWER
121.3 239.025
BOSTON DEP CON
124.9 269.075



TAKE-OFF MINIMUMS

- Rwy 6: STANDARD. ATC Climb of 320' per NM to 3000.
- Rwy 17: 300-1¼ or STANDARD with minimum obstacle climb of 277' per NM to 600. ATC Climb of 320' per NM to 3000.
- Rwy 24: STANDARD with minimum obstacle climb of 320' to 700. ATC Climb of 320' per NM to 3000.
- Rwy 35: 300-1½ or STANDARD with minimum obstacle climb of 253' per NM to 500. ATC Climb of 320' per NM to 3000.

NE-1, 22 OCT 2009 to 19 NOV 2009



- NOTE: For TURBOJETs Only.
- NOTE: DME/DME/IRU or GPS Required.
- NOTE: RADAR Required.
- NOTE: RNAV 1.

(NARRATIVE ON FOLLOWING PAGE)

NOTE: Chart not to scale.

NE-1, 22 OCT 2009 to 19 NOV 2009

COTEE TWO DEPARTURE (RNAV)

MANCHESTER, NEW HAMPSHIRE
MANCHESTER (MHT)