

MADISON, WISCONSIN

AL-245 (FAA)

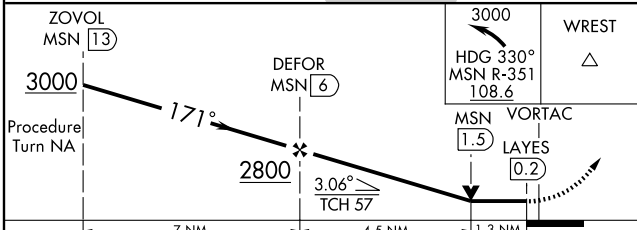
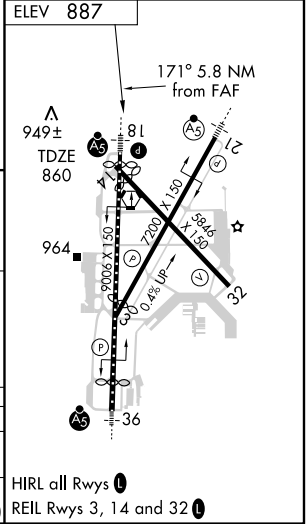
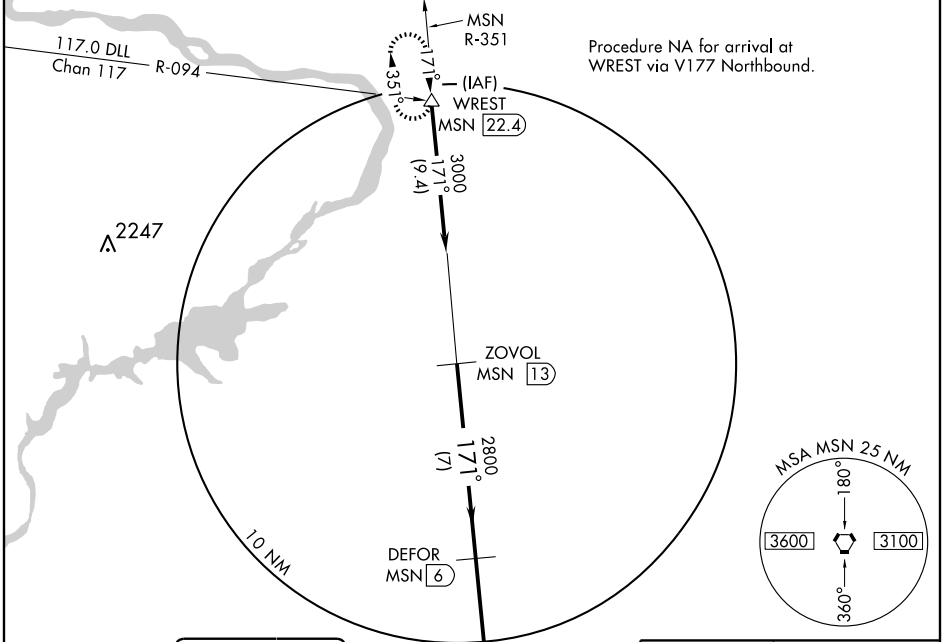
VOR/DME or TACAN RWY 18

MADISON/DANE COUNTY RGNL-TRUAX FIELD (MSN)

VORTAC MSN 108.6 Chan 23	APP CRS 171°	Rwy Idg 8606 TDZE 860 Apt Elev 887
---------------------------------------	------------------------	--

For inoperative MALSRS, increase S-18 Cat E visibility to 1 3/4.	MISSED APPROACH: Climbing left turn to 3000 via heading 330° and R-351 to WREST Int and hold.
--	---

ATIS 124.65 278.3	MADISON APP CON * 135.45 343.7	MADISON TOWER * 119.3 (CTAF) 0 257.8	GND CON 121.9 348.6	CLNC DEL 121.62	UNICOM 122.95
-----------------------------	--	--	-------------------------------	---------------------------	-------------------------



CATEGORY	A	B	C	D	E
S-18	1360/24	500 (500-1/2)	1360/40	1360/50	1360/60
			500 (500-3/4)	500 (500-1)	500 (500-1 1/4)
CIRCLING	1400-1	1460-1	1460-1 1/2	1460-2	1680-2 3/4
	513 (600-1)	573 (600-1)	573 (600-1 1/2)	573 (600-2)	793 (800-2 3/4)

MADISON, WISCONSIN
And 1 09295

MADISON/DANE COUNTY RGNL-TRUAX FIELD (MSN)
43° 08' N - 89° 20' W **VOR/DME or TACAN RWY 18**

EC-3, 22 OCT 2009 to 19 NOV 2009

EC-3, 22 OCT 2009 to 19 NOV 2009