

MADISON, WISCONSIN

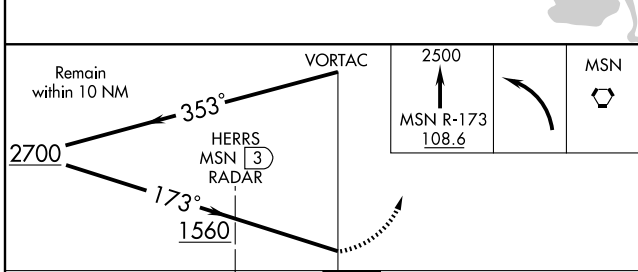
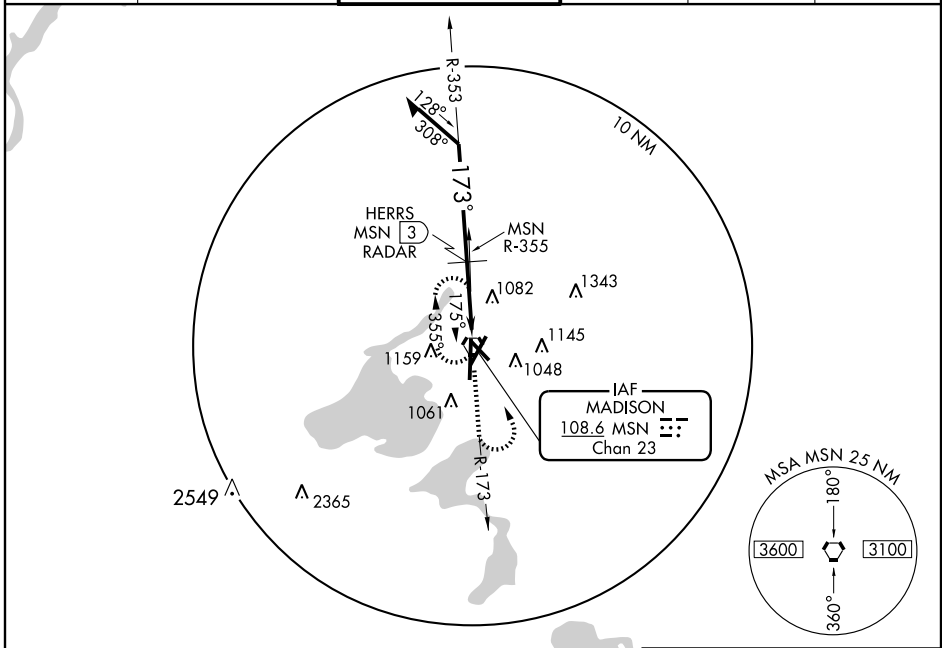
AL-245 (FAA)

VOR RWY 18

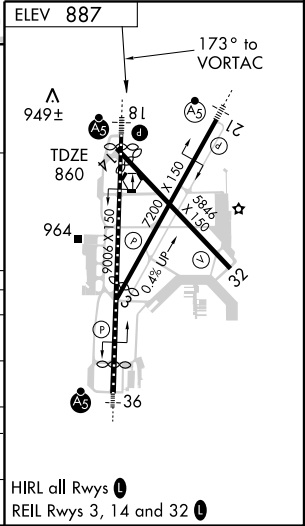
MADISON/DANE COUNTY RGNL-TRUAX FIELD (MSN)

VORTAC MSN 108.6 Chan 23	APP CRS 173°	Rwy Idg 8606 TDZE 860 Apt Elev 887
--	------------------------	---

ASR	MALSR	MISSED APPROACH: Climb to 2500 via MSN R-173 then left turn direct MSN VORTAC and hold.			
ATIS 124.65 278.3	MADISON APP CON * 135.45 343.7	MADISON TOWER * 119.3 (CTAF) 257.8	GND CON 121.9 348.6	CLNC DEL 121.62	UNICOM 122.95



CATEGORY	A	B	C	D
S-18	1560/24	700 (700-½)	1560-1½ 700 (700-1½)	1560-1¾ 700 (700-1¾)
CIRCLING	1560-1	673 (700-1)	1560-2 673 (700-2)	1560-2¼ 673 (700-2¼)
HERRS DME/RADAR FIX MINIMUMS				
S-18	1340/24	480 (500-½)	1340/40 480 (500-¾)	1340/50 480 (500-1)
CIRCLING	1400-1 513 (600-1)	1460-1 573 (600-1)	1460-1½ 573 (600-1½)	1460-2 573 (600-2)



MADISON, WISCONSIN
Orig 09295

MADISON/DANE COUNTY RGNL-TRUAX FIELD (MSN)
43° 08' N - 89° 20' W

VOR RWY 18

EC-3, 22 OCT 2009 to 19 NOV 2009

EC-3, 22 OCT 2009 to 19 NOV 2009