

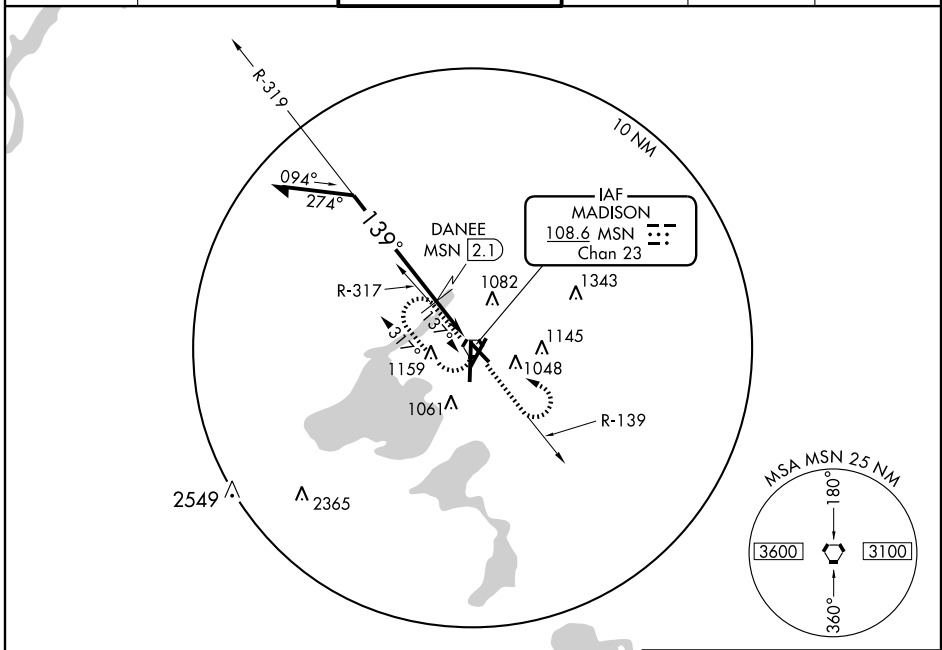
VOR RWY 14

MADISON/DANE COUNTY RGNL-TRUAX FIELD (MSN)

VORTAC MSN 108.6 Chan 23	APP CRS 139°	Rwy Idg TDZE Apt Elev	5371 861 887
--	------------------------	-----------------------------	---

MISSED APPROACH: Climb to 2700 via MSN R-139 then left turn direct MSN VORTAC and hold.

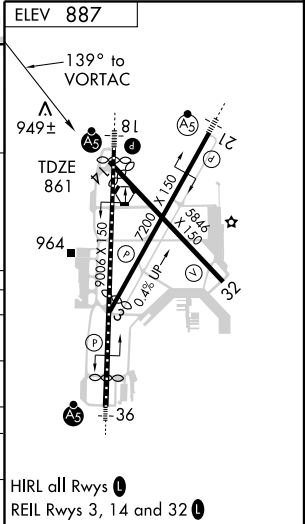
ATIS 124.65 278.3	MADISON APP CON * 135.45 343.7	MADISON TOWER * 119.3 (CTAF) 0 257.8	GND CON 121.9 348.6	CLNC DEL 121.62	UNICOM 122.95
-----------------------------	--	---	-------------------------------	---------------------------	-------------------------



EC-3, 22 OCT 2009 to 19 NOV 2009

EC-3, 22 OCT 2009 to 19 NOV 2009

Remain within 10 NM		VORTAC		2700	MSN
2700		319°		↑ MSN R-139 108.6	⬅ MSN
DANEE MSN (2.1)		139°			
1500		2.91°			
TCH 55		MSN (1.5)			
0.6 NM		1.3 NM			
		0.2			
CATEGORY	A	B	C	D	
S-14	1500-1	639 (700-1)	1500-1¼ 639 (700-1¼)	1500-2 639 (700-2)	
CIRCLING	1500-1	613 (700-1)	1500-1¼ 613 (700-1¼)	1500-2 613 (700-2)	
DANEE FIX MINIMUMS					
S-14	1300-1	439 (500-1)	1300-1¼ 439 (500-1¼)	1300-1½ 439 (500-1½)	
CIRCLING	1400-1 513 (600-1)	1460-1 573 (600-1)	1460-1½ 573 (600-1½)	1460-2 573 (600-2)	



VOR RWY 14