

MACON, GEORGIA

AL-244 (FAA)

RNAV (GPS) RWY 10

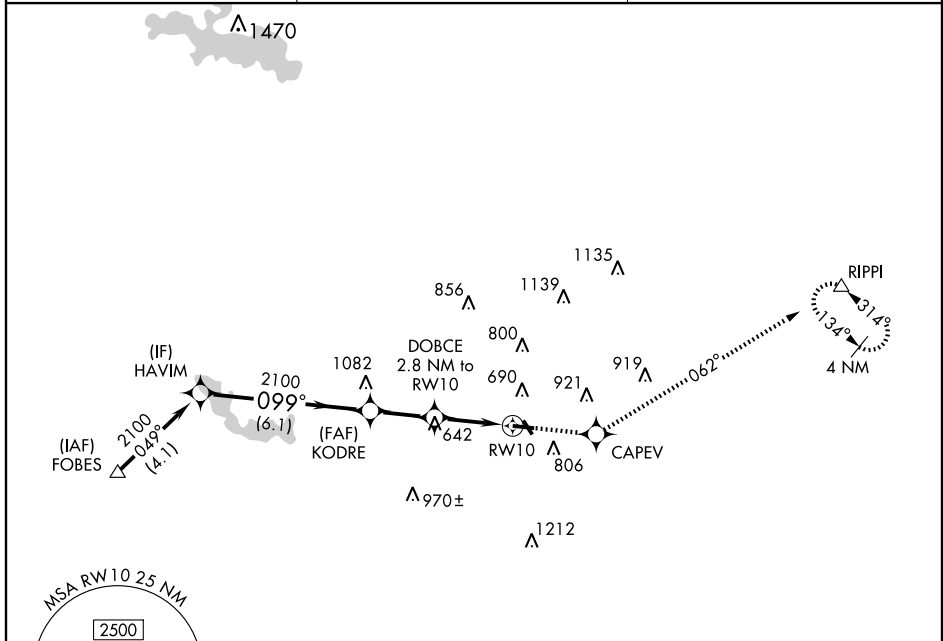
MACON DOWNTOWN (MAC)

APP CRS 099°	Rwy Idg 4696
	TDZE 430
	Apt Elev 437

NA DME/DME RNP-0.3 NA. Visibility reduction by helicopters NA. Use Middle Georgia Rgnl altimeter setting; when not received, use Robins AFB altimeter setting and increase all MDAs 20 feet.

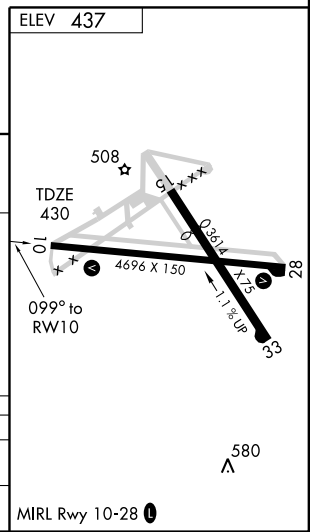
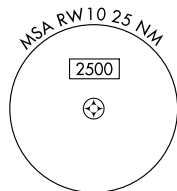
MISSED APPROACH: Climb to 3000 direct CAPEV then via 062° track to RIPPI and hold.

MIDDLE GEORGIA RGNL ASOS ★ 120.775	ATLANTA APP CON ★ 124.2 279.6	UNICOM 123.0 (CTAF) 0
--	---	---------------------------------



SE-4, 22 OCT 2009 to 19 NOV 2009

SE-4, 22 OCT 2009 to 19 NOV 2009



	HAVIM	KODRE	3000	CAPEV	062° TRK	RIPPI
Procedure Turn NA	2100	2100	↑	◆	△	△
	VGSIs and descent angles not coincident.		DOBCE 2.8 NM to RW10			
			1340	RW10		
			3.06°	TCH 40		
	6.1 NM		2.3 NM	2.8 NM		
CATEGORY	A	B	C	D		
LNVA MDA	980-1	550 (600-1)	980-1½ 550 (600-1½)	980-1¾ 550 (600-1¾)		
CIRCLING	1200-1 763 (800-1)	1200-1¼ 763 (800-1¼)	1200-2¼ 763 (800-2¼)	1320-3 883 (900-3)		

MACON, GEORGIA
Orig 09015

32°49'N-83°34'W

RNAV (GPS) RWY 10

MIRL Rwy 10-28 0