

LUBBOCK, TEXAS

AL-241 (FAA)

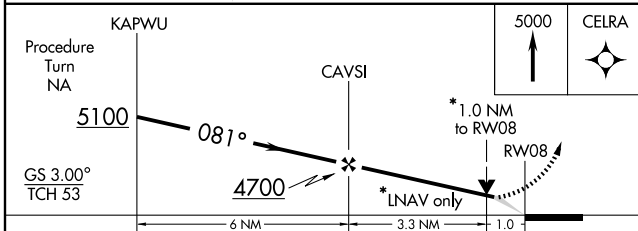
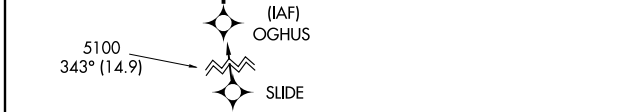
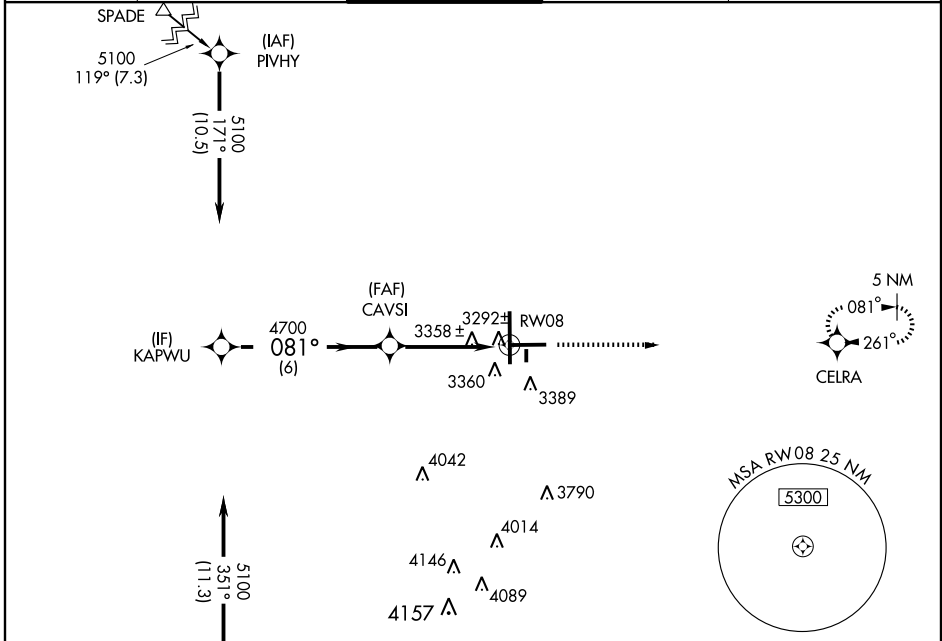
WAAS CH <b>97327</b> <b>W08A</b>	APP CRS <b>081°</b>	Rwy Idg TDZE Apt Elev	<b>7801</b> <b>3256</b> <b>3282</b>
--	------------------------	-----------------------------	---

# RNAV (GPS) RWY 8

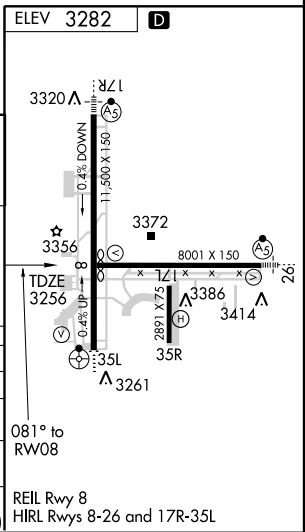
LUBBOCK PRESTON SMITH INTL (LBB)

<b>ASR</b>	DME/DME RNP-0.3 NA. BARO-VNAV NA below -21°C (-5°F).	MISSED APPROACH: Climb to 5000 direct CELRA and hold.		
------------	---	---	--	--

ATIS <b>125.3</b>	LUBBOCK APP CON <b>119.2 351.8</b>	LUBBOCK TOWER <b>120.5 239.3</b>	GND CON <b>121.9 348.6</b>	CLNC DEL <b>125.8 281.55</b>
----------------------	---------------------------------------	-------------------------------------	-------------------------------	---------------------------------



CATEGORY	A	B	C	D	E
LPV DA	3507-¾		250 (300-¾)		
LNAV/VNAV DA	3633-1¼		376 (400-1¼)		
LNAV MDA	3620-1		363 (400-1)		3620-1¼ 363 (400-1¼)
CIRCLING	3720-1¼ 438 (500-1¼)	3740-1¼ 458 (500-1¼)	3740-1½ 458 (500-1½)	3840-2 558 (600-2)	3980-2½ 698 (700-2½)



SC-2, 22 OCT 2009 to 19 NOV 2009

SC-2, 22 OCT 2009 to 19 NOV 2009

LUBBOCK, TEXAS  
Amdt 1 09071

33°40'N-101°49'W

# RNAV (GPS) RWY 8