

LUBBOCK, TEXAS

AL-241 (FAA)

# RNAV (GPS) RWY 35L

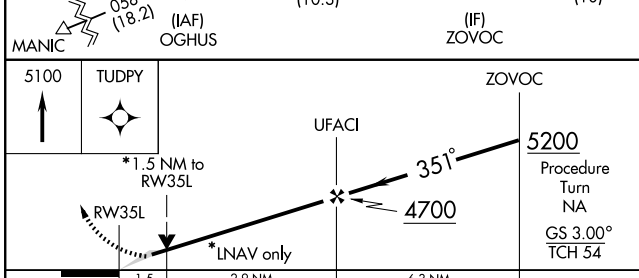
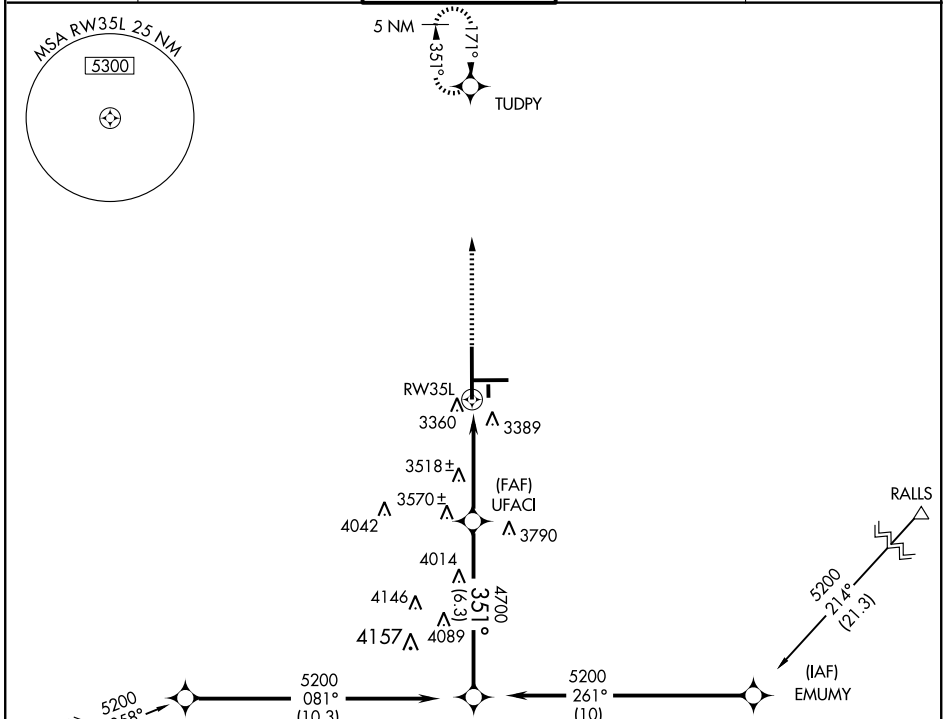
LUBBOCK PRESTON SMITH INTL (L.B.B)

WAAS CH <b>50128</b> <b>W35A</b>	APP CRS <b>351°</b>	Rwy Idg <b>11500</b> TDZE <b>3254</b> Apt Elev <b>3282</b>
--	------------------------	--

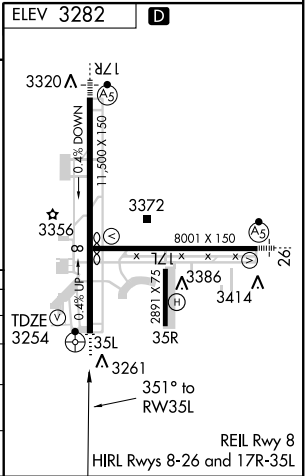
**⚠** BARO-VNAV NA below -21°C (-5°F). DME/DME RNP-0.3 NA. Inoperative table does not apply to LPV, LNAV/VNAV all Cats and LNAV Cat C.

**ODALS**  
**⊕** **⋮**  
MISSED APPROACH: Climb to 5100 direct TUDPY and hold.

ATIS <b>125.3</b>	LUBBOCK APP CON <b>119.2 351.8</b>	LUBBOCK TOWER <b>120.5 239.3</b>	GND CON <b>121.9 348.6</b>	CLNC DEL <b>125.8 281.55</b>
----------------------	---------------------------------------	-------------------------------------	-------------------------------	---------------------------------



CATEGORY	A	B	C	D	E
LPV DA	3504-¾		250 (300-¾)		
LNAV/VNAV DA	3672-1½		418 (500-1½)		
LNAV MDA	3780-¾	526 (600-¾)	3780-1½ 526 (600-1½)	3780-1¾	526 (600-1¾)
CIRCLING	3780-1½		498 (500-1½)	3840-2 558 (600-2)	3980-2½ 698 (700-2½)



LUBBOCK, TEXAS  
Amdt 1 09071

33°40'N-101°49'W

# RNAV (GPS) RWY 35L

SC-2, 22 OCT 2009 to 19 NOV 2009

SC-2, 22 OCT 2009 to 19 NOV 2009