

RNAV (GPS) RWY 26

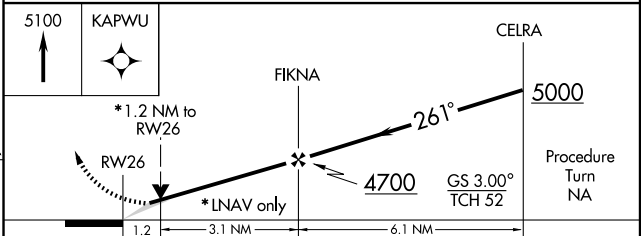
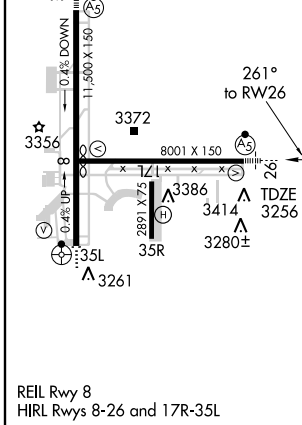
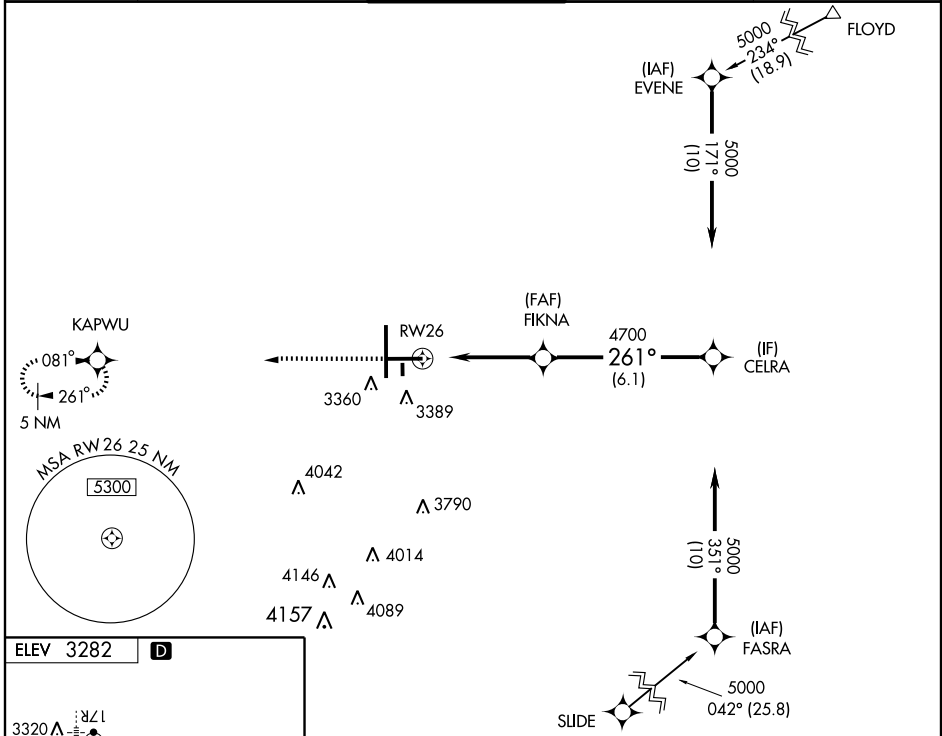
LUBBOCK PRESTON SMITH INTL (LBB)

WAAS CH 45528 W26A	APP CRS 261°	Rwy Idg 8001 TDZE 3256 Apt Elev 3282
--	------------------------	---

ASR **MALSR**
 BARO-VNAV NA below -21°C (-5°F). DME/DME RNP-0.3 NA. For inoperative MALSR increase LPV visibility to RVR 4000 all Cats, LNAV/VNAV Cat E to RVR 6000 and LNAV Cat D visibility to RVR 6000 and Cat E to 1½.

MISSED APPROACH: Climb to 5100 direct KAPWU and hold.

ATIS 125.3	LUBBOCK APP CON 119.2 351.8	LUBBOCK TOWER 120.5 239.3	GND CON 121.9 348.6	CLNC DEL 125.8 281.55
----------------------	---------------------------------------	-------------------------------------	-------------------------------	---------------------------------



CATEGORY	A	B	C	D	E
LPV DA	3506/24 250 (300-½)				
LNAV/ VNAV DA	3609/40 353 (400-¾)				
LNAV MDA	3680/24	424 (500-½)	3680/40 424 (500-¾)	3680/50	424 (500-1)
CIRCLING	3720-1¼ 438 (500-1¼)	3740-1¼ 458 (500-1¼)	3740-1½ 458 (500-1½)	3840-2 558 (600-2)	3980-2½ 698 (700-2½)

SC-2, 22 OCT 2009 to 19 NOV 2009

SC-2, 22 OCT 2009 to 19 NOV 2009