

ILS or LOC RWY 17R

LUBBOCK PRESTON SMITH INTL (LBB)

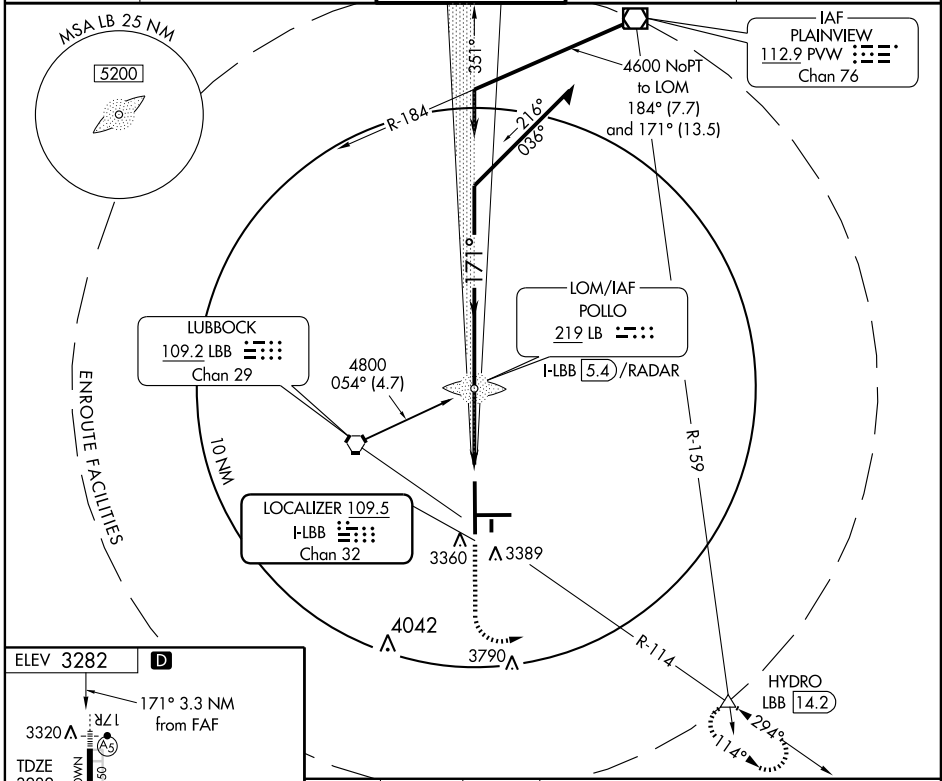
LOC I-LBB 109.5 Chan 32	APP CRS 171°	Rwy Idg 11500 TDZE 3282 Apt Elev 3282
--------------------------------------	------------------------	--

ASR S-LOC 17R visibility increased to RVR 5000 Cat. D and RVR 6000 Cat. E. for inoperative MALSR.
* RVR 1800 authorized with the use of FD or AP or HUD to DA.



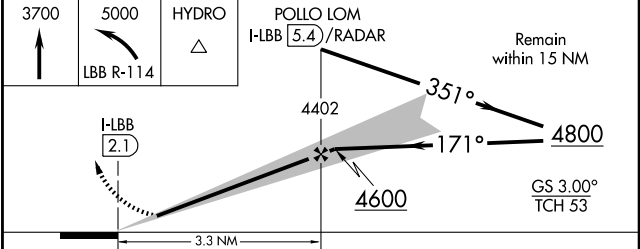
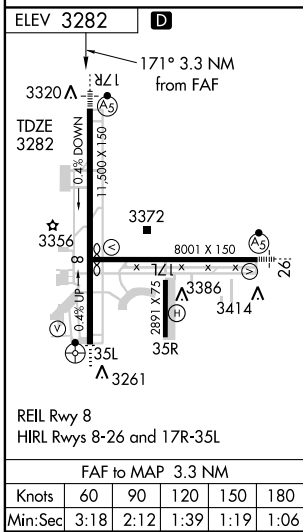
MISSED APPROACH: Climb to 3700, then climbing left turn to 5000 via LBB R-114 to HYDRO Int and hold.

ATIS 125.3	LUBBOCK APP CON 119.2 351.8	LUBBOCK TOWER 120.5 239.3	GND CON 121.9 348.6	CLNC DEL 125.8 281.55
----------------------	---------------------------------------	-------------------------------------	-------------------------------	---------------------------------



SC-2, 22 OCT 2009 to 19 NOV 2009

SC-2, 22 OCT 2009 to 19 NOV 2009



CATEGORY	A	B	C	D	E
S-ILS 17R		*3482/24	200 (200-½)		
S-LOC 17R		3620/24	338 (400-½)	3620/40	338 (400-¾)
CIRCLING	3720-1 438 (500-1)	3740-1 458 (500-1)	3740-1½ 458 (500-1½)	3840-2 558 (600-2)	3980-2½ 698 (700-2½)