

LUBBOCK, TEXAS

HI-VOR/DME or TACAN RWY 26

VORTAC LBB 109.2 Chan 29	APCH CRS 282°	Rwy ldg TDZE Arpt Elev 8001 3255 3282
--	-------------------------	---

JAL-241 [USAF]

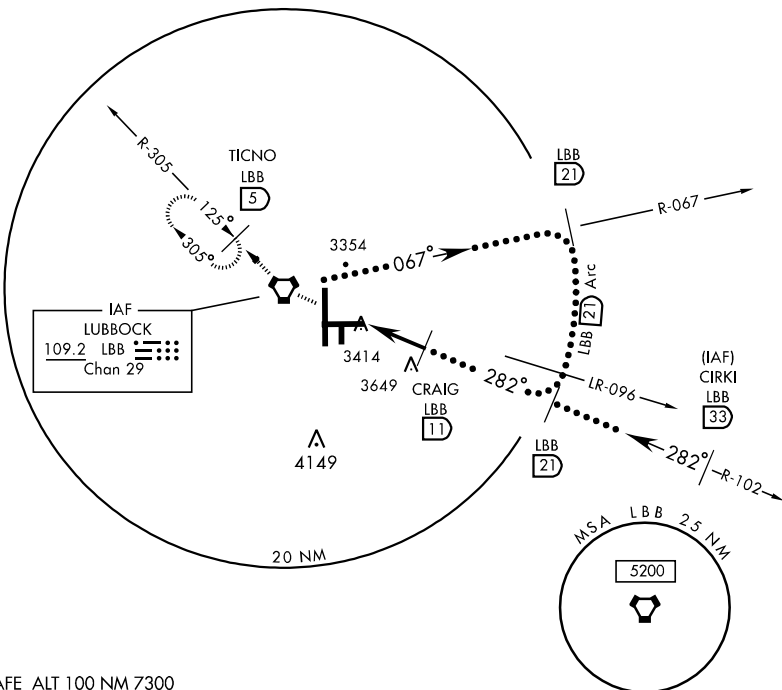
LUBBOCK PRESTON SMITH INTL (KLBB)

* Inoperative Table does not apply.



MISSED APPROACH: Climb to 5000 direct LBB VORTAC and via LBB R-305 to TICNO (LBB 5 DME) and hold.

ATIS 125.3	LUBBOCK APP CON 119.2 351.8	LUBBOCK TOWER 120.5 239.3	GND CON 121.9 348.6	CLNC DEL 125.8 281.55	ASR
----------------------	---------------------------------------	-------------------------------------	-------------------------------	---------------------------------	-----

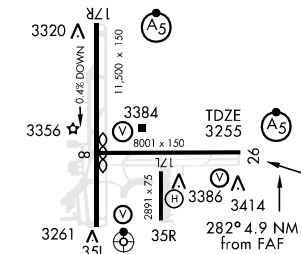
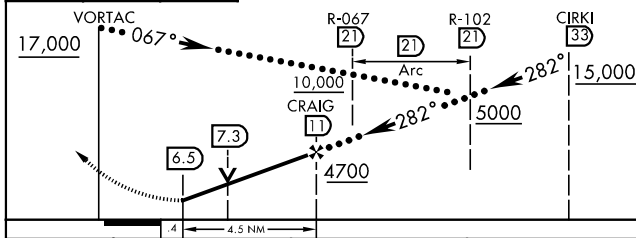


EMERG SAFE ALT 100 NM 7300

5000 ↑	LBB 	TICNO LBB R-305 5
-----------	---------	----------------------------

ELEV 3282

Rwy 8 ldg 7801'



CATEGORY	C	D	E
S-26 *	3680-1¼	425 (400-1¼)	3680-1½ 425 (400-1½)
CIRCLING	3740-1½ 459 (500-1½)	3840-2 559 (600-2)	3980-2½ 699 (700-2½)

REIL Rwy 8
HIRL Rwy 8-26 and 17R-35L

LUBBOCK, TEXAS
Orig 05048

33°40'N-101°49'W

LUBBOCK PRESTON SMITH INTL (KLBB)

HI-VOR/DME or TACAN RWY 26

SC-2, 22 OCT 2009 to 19 NOV 2009

SC-2, 22 OCT 2009 to 19 NOV 2009