

LUBBOCK, TEXAS

# HI-ILS RWY 17R

LOC I-LBB <b>109.5</b> Chan <b>32</b>	APCH CRS <b>171°</b>	Rwy Idg <b>11,500</b> TDZE <b>3281</b> Arpt Elev <b>3282</b>
---	-------------------------	--

JAL-241 [USAF]

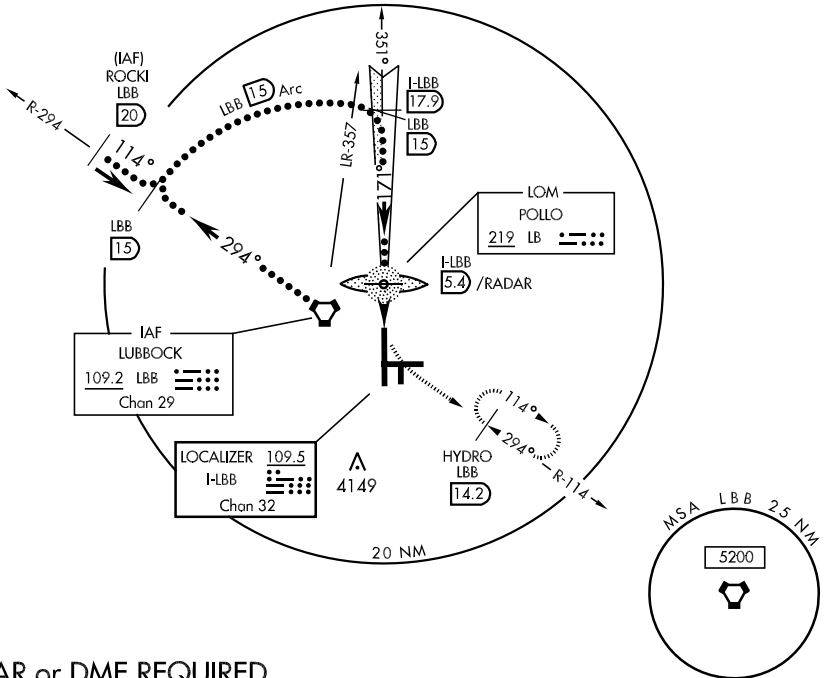
LUBBOCK PRESTON SMITH INTL (KLBB)

\*When MALSR inop, increase vis ½ mile.



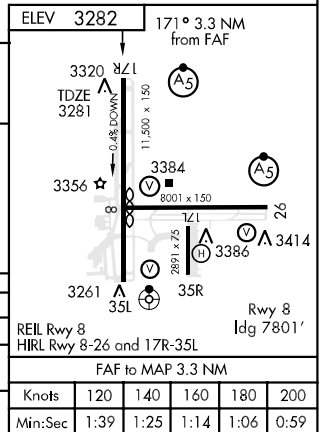
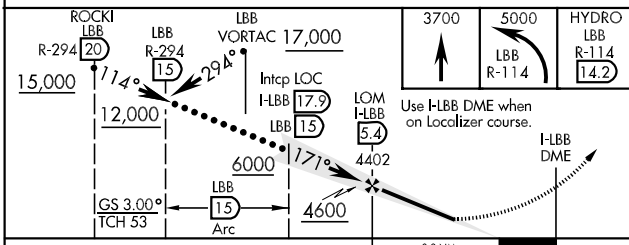
MISSED APPROACH: Climb to 3700, then climbing left turn to 5000 via LBB R-114 to HYDRO INT/ LBB 14.2 DME and hold.

ATIS <b>125.3</b>	LUBBOCK APP CON <b>119.2 351.8</b>	LUBBOCK TOWER <b>120.5 239.3</b>	GND CON <b>121.9 348.6</b>	CLNC DEL <b>125.8 281.55</b>	ASR
----------------------	---------------------------------------	-------------------------------------	-------------------------------	---------------------------------	-----



## RADAR or DME REQUIRED

EMERG SAFE ALT 100 NM 7300



CATEGORY	C	D	E
S-ILS 17R	3481/24	200 (200-½)	
S-LOC 17R *	3620/24 339 (400-½)	3620/40 339 (400-¾)	
CIRCLING	3740-1½ 459 (500-1½)	3840-2 559 (600-2)	3980-2½ 699 (700-2½)

LUBBOCK, TEXAS  
Orig 09211

33°40'N-101°49'W

LUBBOCK PRESTON SMITH INTL (KLBB)

# HI-ILS RWY 17R

SC-2, 22 OCT 2009 to 19 NOV 2009

SC-2, 22 OCT 2009 to 19 NOV 2009