

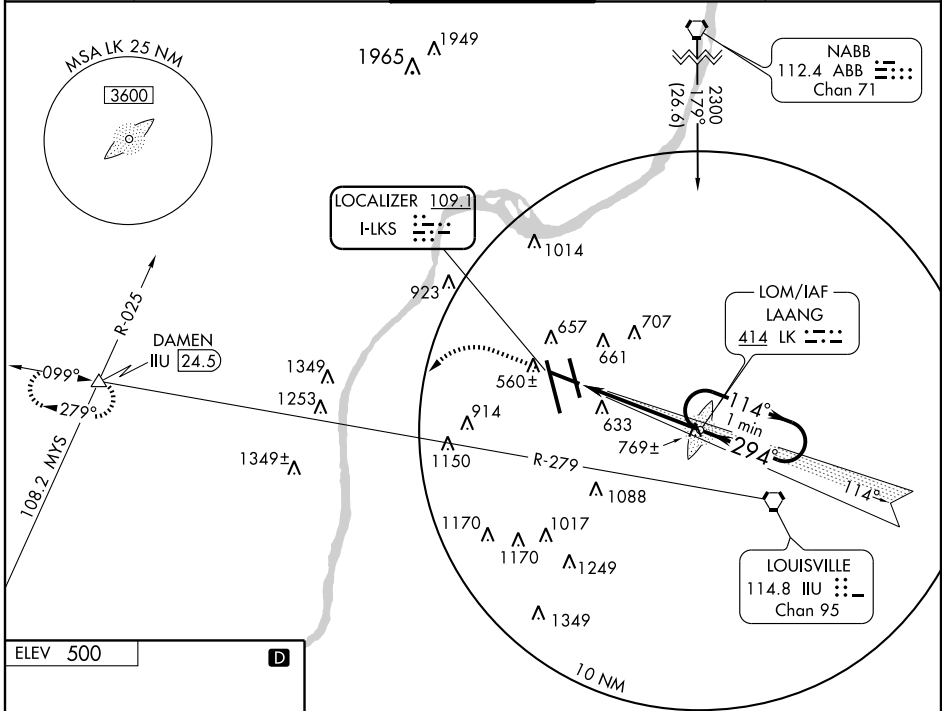
LOC RWY 29

LOUISVILLE INTL-STANDIFORD FIELD (SDF)

LOC I-LKS 109.1	APP CRS 294°	Rwy Idg TDZE Apt Elev	7250 481 500
---------------------------	------------------------	-----------------------------	---

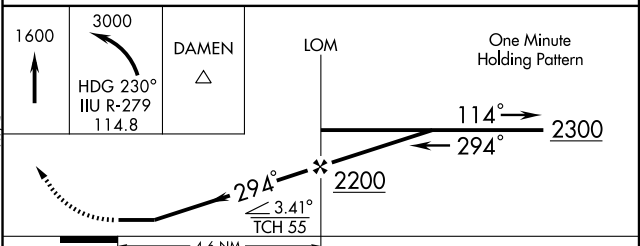
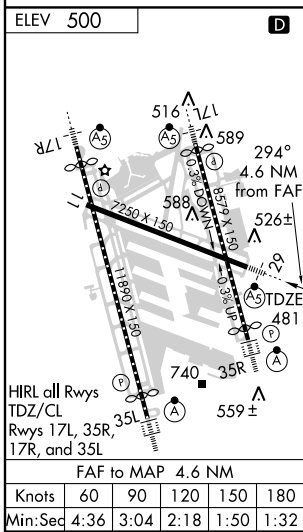
	ADF Required.		MISSED APPROACH: Climb to 1600 then climbing left turn to 3000 via heading 230° and IJU R-279 to DAMEN Int/IJU 24.5 DME and hold.	
	ATIS 118.725	LOUISVILLE APP CON 132.075 327.0 (EAST) 123.675 327.0 (WEST)	LOUISVILLE TOWER 124.2 257.8	GND CON 121.7 348.6

ATIS 118.725	LOUISVILLE APP CON 132.075 327.0 (EAST) 123.675 327.0 (WEST)	LOUISVILLE TOWER 124.2 257.8	GND CON 121.7 348.6	CLNC DEL 126.1 275.8
------------------------	--	--	-------------------------------	--------------------------------



SE-1, 22 OCT 2009 to 19 NOV 2009

SE-1, 22 OCT 2009 to 19 NOV 2009



CATEGORY	A	B	C	D
S-29	980/24	499 (500-½)	980/40 499 (500-¾)	980/50 499 (500-1)
CIRCLING	1040-1 540 (600-1)	1140-1 640 (700-1)	1140-1¾ 640 (700-1¾)	1140-2 640 (700-2)