

# ILS or LOC RWY 35R

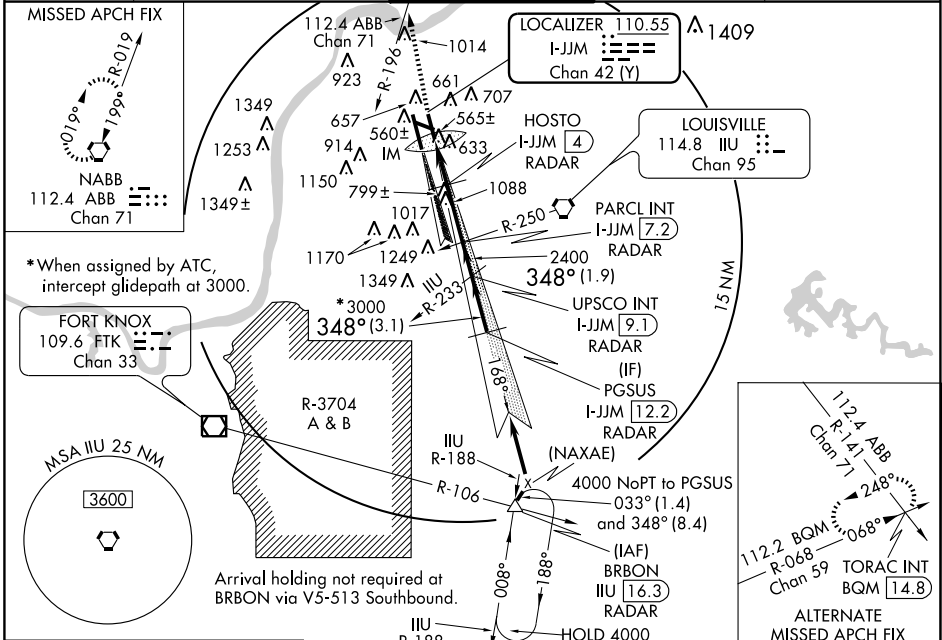
LOUISVILLE INTL-STANDIFORD FIELD (SDF)

LOC/DME I-JJM <b>110.55</b> Chan <b>42 (Y)</b>	APP CRS <b>348°</b>	Rwy Idg TDZE Apt Elev	<b>7800</b> <b>480</b> <b>501</b>
--	------------------------	-----------------------------	---

**ALSF-2** For inoperative ALSF-2, increase S-LOC 35R (DME MINIMUMS) Cat. D visibility to RVR 5000. DME or RADAR REQUIRED.

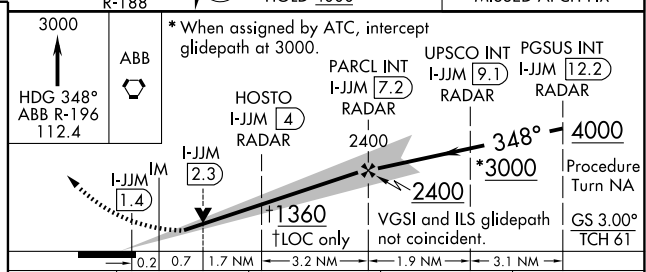
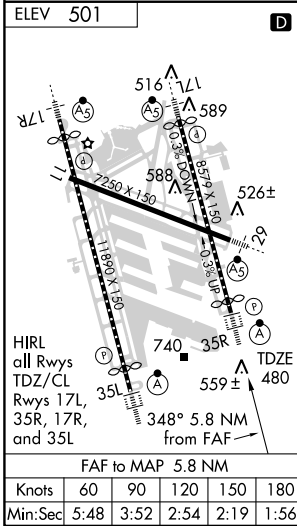
**MISSED APPROACH:** Climb to 3000 via heading 348° and ABB VORTAC R-196 to ABB VORTAC and hold.

ATIS <b>118.725</b>	LOUISVILLE APP CON <b>132.075 327.0 (EAST)</b> <b>123.675 327.0 (WEST)</b>	LOUISVILLE TOWER <b>124.2 257.8</b>	GND CON <b>121.7 348.6</b>	CLNC DEL <b>126.1 275.8</b>
------------------------	--	--	-------------------------------	--------------------------------



SE-1, 22 OCT 2009 to 19 NOV 2009

SE-1, 22 OCT 2009 to 19 NOV 2009



CATEGORY	A	B	C	D
S-ILS 35R	680/18 200 (200-1/2)			
S-LOC 35R	1360/24 880 (900-1/2)	1360/40 880 (900-3/4)	1360-2 880 (900-2)	1360-2 1/4 880 (900-2 1/4)
CIRCLING	1360-1 859 (900-1)	1360-1 1/4 859 (900-1 1/4)	1360-2 1/2 859 (900-2 1/2)	1360-2 3/4 859 (900-2 3/4)
HOSTO FIX MINIMUMS				
S-LOC 35R	820/24 340 (400-1/2)			820/40 340 (400-3/4)
CIRCLING	1040-1 539 (600-1)	1140-1 639 (700-1)	1140-1 3/4 639 (700-1 1/4)	1140-2 639 (700-2)