

ILS or LOC RWY 17R

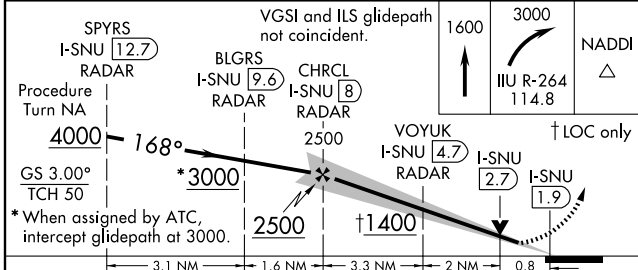
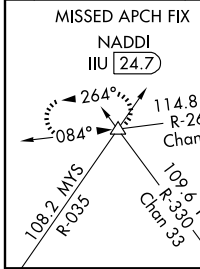
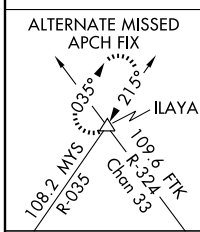
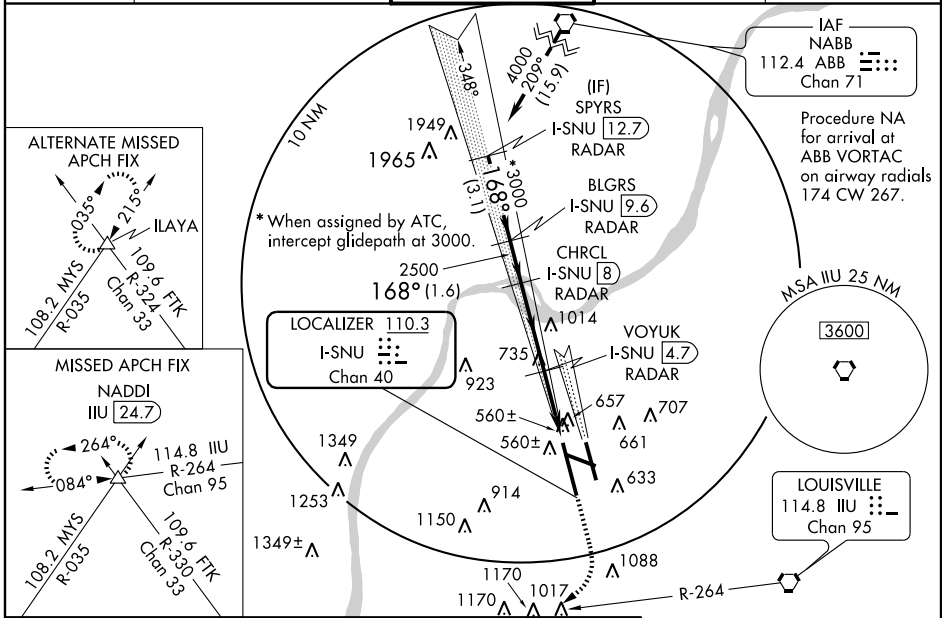
LOUISVILLE INTL-STANDIFORD FIELD (SDF)

LOC/DME I-SNU 110.3 Chan 40	APP CRS 168°	Rwy ldg 10000 TDZE 490 Apt Elev 501
---	------------------------	--

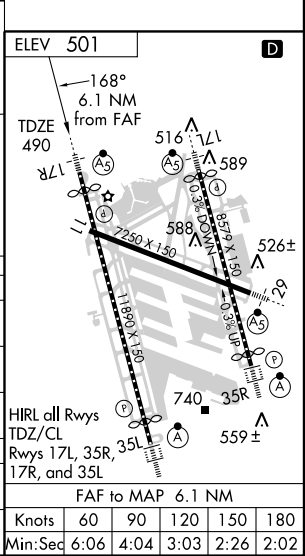
▼ For inoperative MALSR, increase VOYUK FIX minimums S-LOC 17R Cat. D visibility to RVR 5000. DME or RADAR Required.
▲ **RVR 1800 authorized with the use of FD or AP or HUD to DA.

MALSR MISSED APPROACH: Climb to 1600 then climbing right turn to 3000 via IIU R-264 to NADDI Int/IIU 24.7 DME and hold.

ATIS 118.725	LOUISVILLE APP CON 132.075 327.0 (EAST) 123.675 327.0 (WEST)	LOUISVILLE TOWER 124.2 257.8	GND CON 121.7 348.6	CLNC DEL 126.1 275.8
------------------------	--	--	-------------------------------	--------------------------------



CATEGORY	A	B	C	D
S-ILS 17R		**690/24	200 (200-½)	
S-LOC 17R	1400/40	910 (900-¾)	1400-2¼ 910 (900-2¼)	1400-2½ 910 (900-2½)
CIRCLING	1400-1¼	899 (900-1¼)	1400-2¾ 899 (900-2¾)	1400-3 899 (900-3)
VOYUK FIX MINIMUMS				
S-LOC 17R	820/24	330 (400-½)		820/40 330 (400-¾)
CIRCLING	1040-1 539 (600-1)	1140-1 639 (700-1)	1140-1¾ 639 (700-1¾)	1140-2 639 (700-2)



SE-1, 22 OCT 2009 to 19 NOV 2009

SE-1, 22 OCT 2009 to 19 NOV 2009