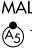


LOC/DME I-PKI 111.95	APP CRS 168°	Rwy ldg TDZE Apt Elev	7800 499 501
Chan 56 (Y)			

ILS or LOC RWY 17L

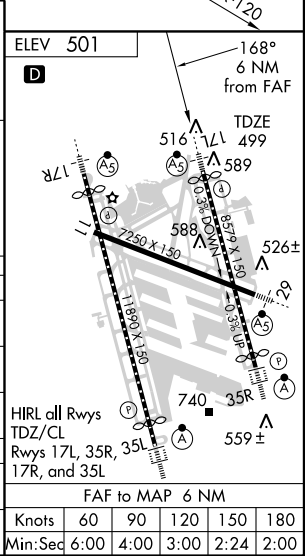
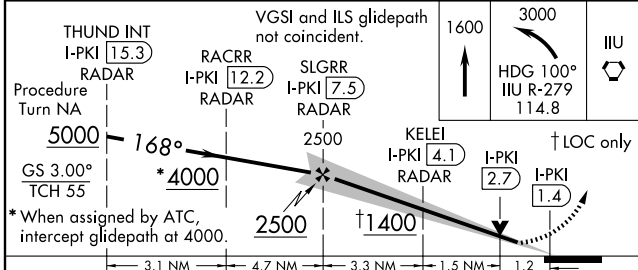
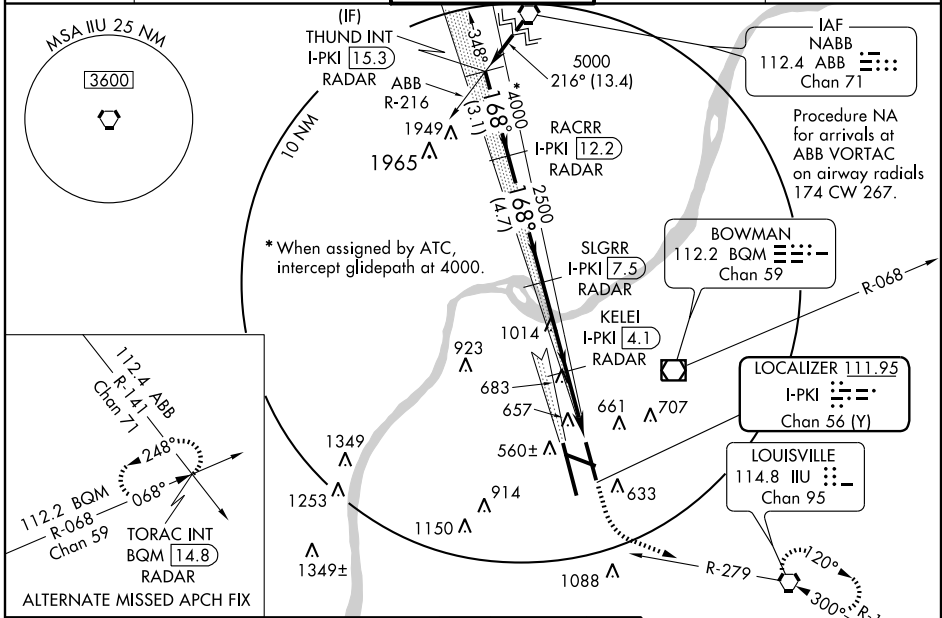
LOUISVILLE INTL-STANDIFORD FIELD (SDF)

MISSED APPROACH: Climb to 1600 then climbing left turn to 3000 via heading 100° and IJU R-279 to IJU VORTAC and hold, continue climb-in-hold to 3000.

MALSRR 

DME or RADAR Required.

ATIS 118.725	LOUISVILLE APP CON 132.075 327.0 (EAST) 123.675 327.0 (WEST)	LOUISVILLE TOWER 124.2 257.8	GND CON 121.7 348.6	CLNC DEL 126.1 275.8
-------------------------------	---	---	--------------------------------------	---------------------------------------



CATEGORY	A	B	C	D
S-ILS 17L	699/18		200 (200-½)	
S-LOC 17L	1400/40	901 (900-¾)	1400-2¼ 901 (900-2¼)	1400-2½ 901 (900-2½)
CIRCLING	1400-1¼	899 (900-1¼)	1400-2¾ 899 (900-2¾)	1400-3 899 (900-3)
KELEI FIX MINIMUMS				
S-LOC 17L	1000/24	501 (500-½)	1000/50	501 (500-1)
CIRCLING	1040-1 539 (600-1)	1140-1 639 (700-1)	1140-1¾ 639 (700-1¾)	1140-2 639 (700-2)

SE-1, 22 OCT 2009 to 19 NOV 2009

SE-1, 22 OCT 2009 to 19 NOV 2009