

LOUISVILLE, KENTUCKY

AL-239 (FAA)

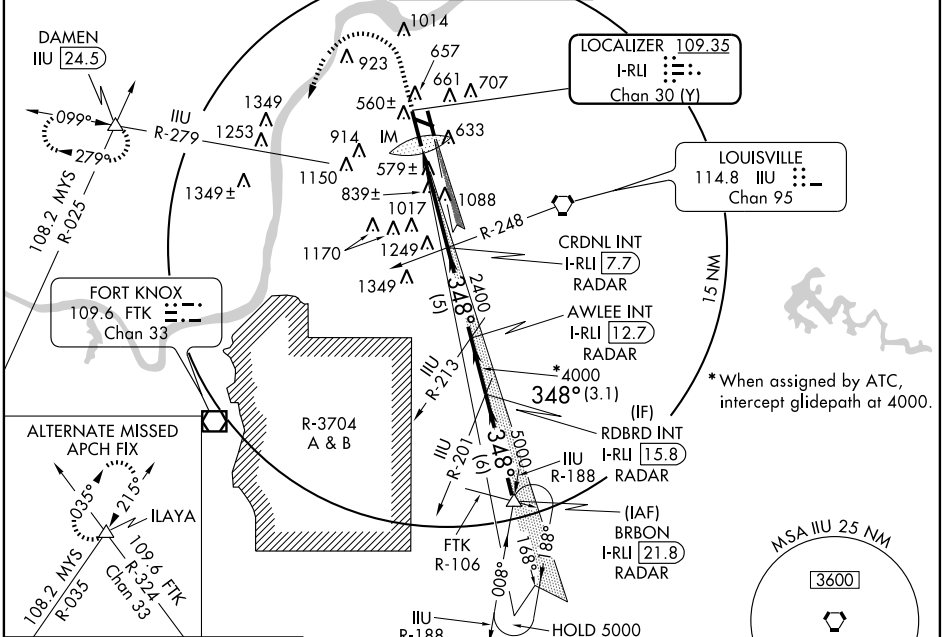
LOC/DME I-RLI 109.35 Chan 30 (Y)	APP CRS 348°	Rwy Idg TDZE 10000 464 Apt Elev 501
---	------------------------	--

ILS RWY 35L (CAT III)

LOUISVILLE INTL-STANDIFORD FIELD (SDF)

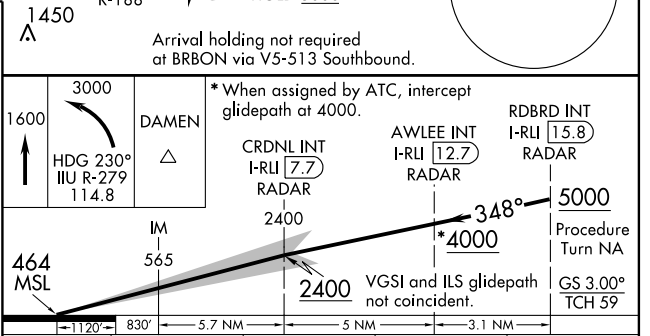
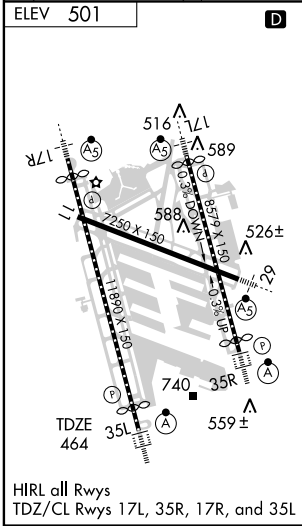
		MISSED APPROACH: Climb to 1600 then climbing left turn to 3000 via heading 230° and IJU R-279 to DAMEN Int/IJU 24.5 DME and hold.
--	--	---

ATIS 118.725	LOUISVILLE APP CON 132.075 327.0 (EAST) 123.675 327.0 (WEST)	LOUISVILLE TOWER 124.2 257.8	GND CON 121.7 348.6	CLNC DEL 126.1 275.8
------------------------	--	--	-------------------------------	--------------------------------



SE-1, 22 OCT 2009 to 19 NOV 2009

SE-1, 22 OCT 2009 to 19 NOV 2009



CATEGORY	A	B	C	D
S-ILS 35L		CAT IIIa	RVR 07	
S-ILS 35L		CAT IIIb	RVR 06	
S-ILS 35L		CAT IIIc	NA	

CATEGORY III ILS - SPECIAL AIRCREW & AIRCRAFT CERTIFICATION REQUIRED

LOUISVILLE, KENTUCKY
Amdt 2 09071

LOUISVILLE INTL-STANDIFORD FIELD (SDF)
38°10'N - 85°44'W
ILS RWY 35L (CAT III)