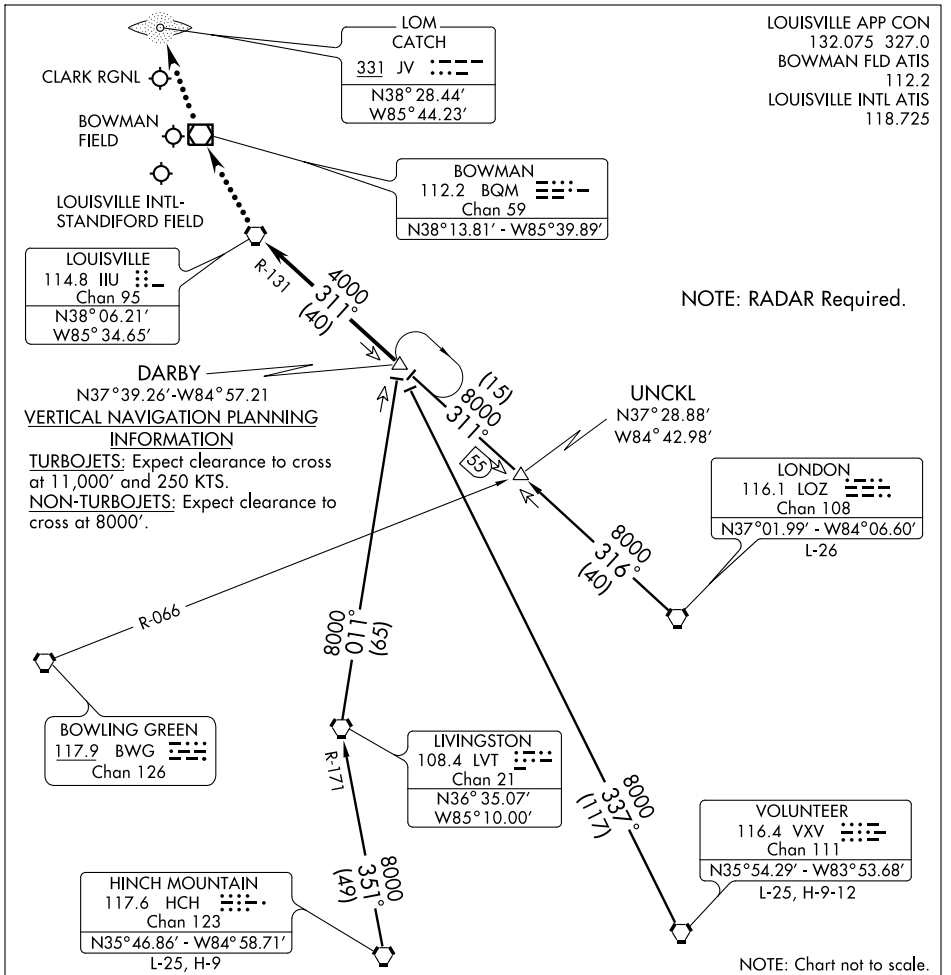


DARBY FOUR ARRIVAL (DARBY.DARBY4)

LOUISVILLE, KENTUCKY



NOTE: RADAR Required.

DARBY
N37°39.26'-W84°57.21'

VERTICAL NAVIGATION PLANNING INFORMATION

TURBOJET: Expect clearance to cross at 11,000' and 250 KTS.
NON-TURBOJET: Expect clearance to cross at 8000'.

BOWLING GREEN
117.9 BWG
Chan 126

LIVINGSTON
108.4 LVT
Chan 21
N36°35.07'
W85°10.00'

LONDON
116.1 LOZ
Chan 108
N37°01.99' - W84°06.60'
L-26

HINCH MOUNTAIN
117.6 HCH
Chan 123
N35°46.86' - W84°58.71'
L-25, H-9

VOLUNTEER
116.4 VXV
Chan 111
N35°54.29' - W83°53.68'
L-25, H-9-12

NOTE: Chart not to scale.

HINCH MOUNTAIN TRANSITION (HCH.DARBY4): From over HCH VORTAC via HCH R-351 and LVT R-171 to LVT VORTAC, then via LVT R-011 to DARBY INT. Thence. . . .

LONDON TRANSITION (LOZ.DARBY4): From over LOZ VORTAC via LOZ R-316 to UNCKL INT, then via IIIU R-131 to DARBY INT. Thence. . . .

UNCKL TRANSITION (UNCKL.DARBY4): From over UNCKL INT via IIIU R-131 to DARBY INT. Thence. . . .

VOLUNTEER TRANSITION (VXV.DARBY4): From over VXV VORTAC via VXV R-337 to DARBY INT. Thence. . . .

. . . . From over DARBY INT via IIIU R-131 to IIIU VORTAC. Expect radar vectors to final course.

LOST COMMUNICATIONS:

For JVV - At IIIU VORTAC, proceed direct BQM VOR/DME, then direct CATCH (JV) LOM. Maintain 4000 feet until CATCH LOM.

DARBY FOUR ARRIVAL (DARBY.DARBY4)

LOUISVILLE, KENTUCKY