

RNAV (GPS) RWY 24

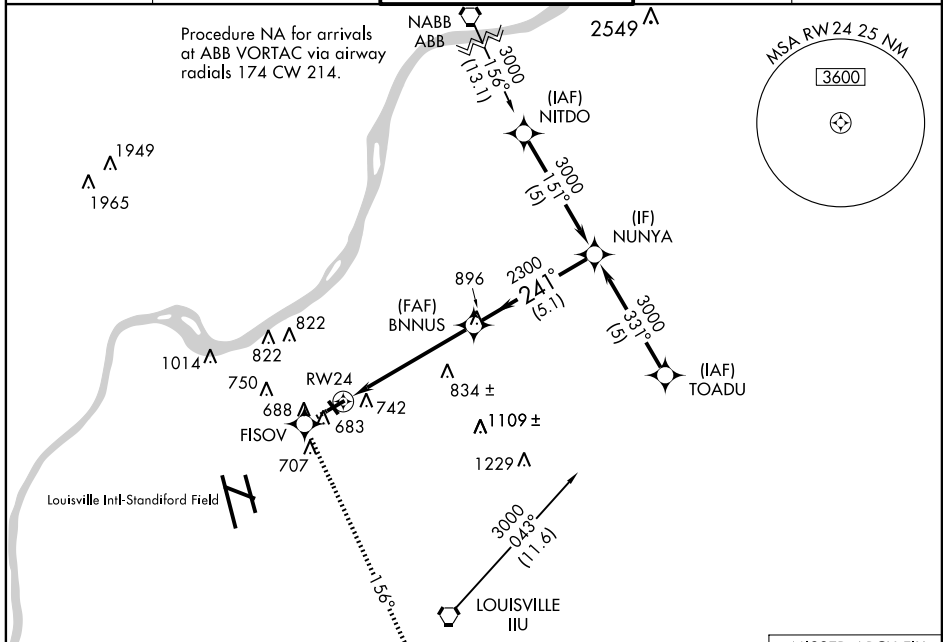
LOUISVILLE/BOWMAN FIELD (LOU)

WAAS CH 45802 W24A	APP CRS 241°	Rwy Idg 3856 TDZE 546 Apt Elev 546
--	------------------------	---

▼ DME/DME RNP-0.3 NA. Visibility reduction by helicopters NA.
▲ If local altimeter setting not received, use Louisville Intl-Standiford Field altimeter setting.

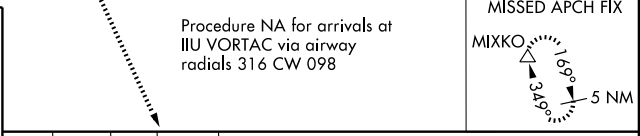
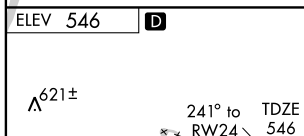
MISSED APPROACH: Climb to 3200 direct FISOV and via 156° track to MIXKO and hold.

ATIS 112.2	LOUISVILLE APP CON 132.075 327.0	BOWMAN TOWER ★ 119.5 (CTAF) 125.625	GND CON 121.8	CLNC DEL 118.9
----------------------	--	--	-------------------------	--------------------------



SE-1, 22 OCT 2009 to 19 NOV 2009

SE-1, 22 OCT 2009 to 19 NOV 2009



	↑	FISOV	156° TRK	MIXKO	NUNYA	Procedure Turn NA
		3200			3000	
		RW24		BNNUS	241°	
					2300	
						GS 3.00°
						TCH 45
						VGSI and RNAV glidepath not coincident.
						5.3 NM
						5.1 NM
CATEGORY	A	B	C	D		
LPV DA	840-1	294 (300-1)		NA		
LNAV MDA	1020-1	474 (500-1)		NA		
CIRCLING	1060-1	514 (600-1)		NA		