

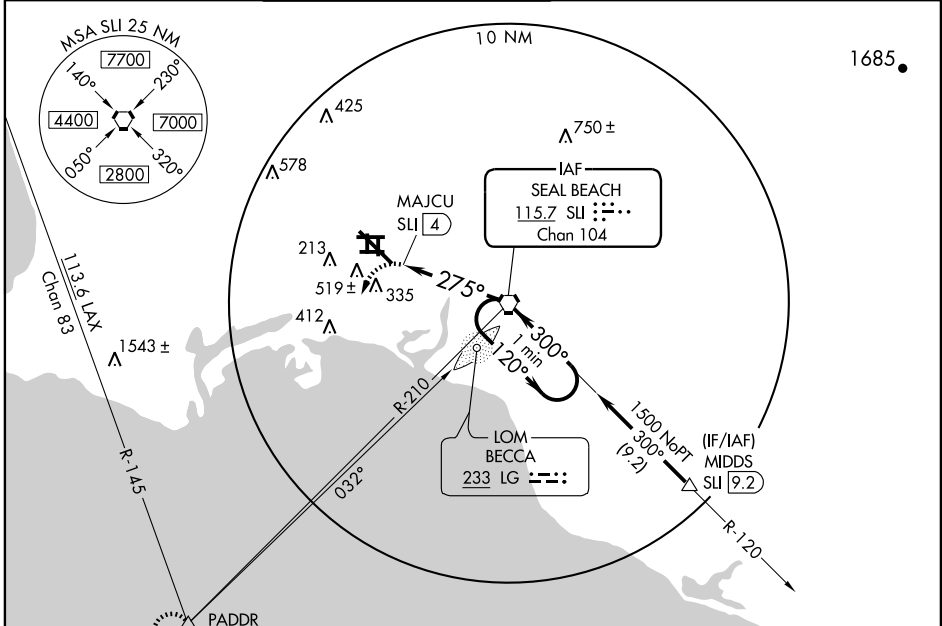
VORTAC SLI 115.7 Chan 104	APP CRS 275°	Rwy ldg TDZE Apt Elev	8000 38 60
---	------------------------	-----------------------------	---------------------------------------

VOR or TACAN RWY 30

LONG BEACH (DAUGHERTY FIELD) (LGB)

<p>Inoperative table does not apply. Visibility reduction by helicopters NA.</p>	<p>MALSR</p>	<p>MISSED APPROACH: Climbing left turn to 2500 via heading 200° and LAX R-145 to PADDR Int/LAX 22 DME and hold.</p>			
			<p>ATIS 127.75</p>	<p>SOCAL APP CON 124.65 316.125</p>	<p>LONG BEACH TOWER* 120.5 257.6 (Rwy 12) 119.4 (CTAF) 0 257.6 (Rwy 30)</p>

ATIS 127.75	SOCAL APP CON 124.65 316.125	LONG BEACH TOWER* 120.5 257.6 (Rwy 12) 119.4 (CTAF) 0 257.6 (Rwy 30)	GND CON 133.0 257.6	CLNC DEL 118.15	UNICOM 122.95
-----------------------	--	---	-------------------------------	---------------------------	-------------------------



SW-3, 22 OCT 2009 to 19 NOV 2009

SW-3, 22 OCT 2009 to 19 NOV 2009

2500

LAX R-145

PADDR

VORTAC

One Minute Holding Pattern

200°

MAJCU SLI 4

275°

120°

300°

1500

≤ 2.80°

TCH 70

0.7

4 NM

