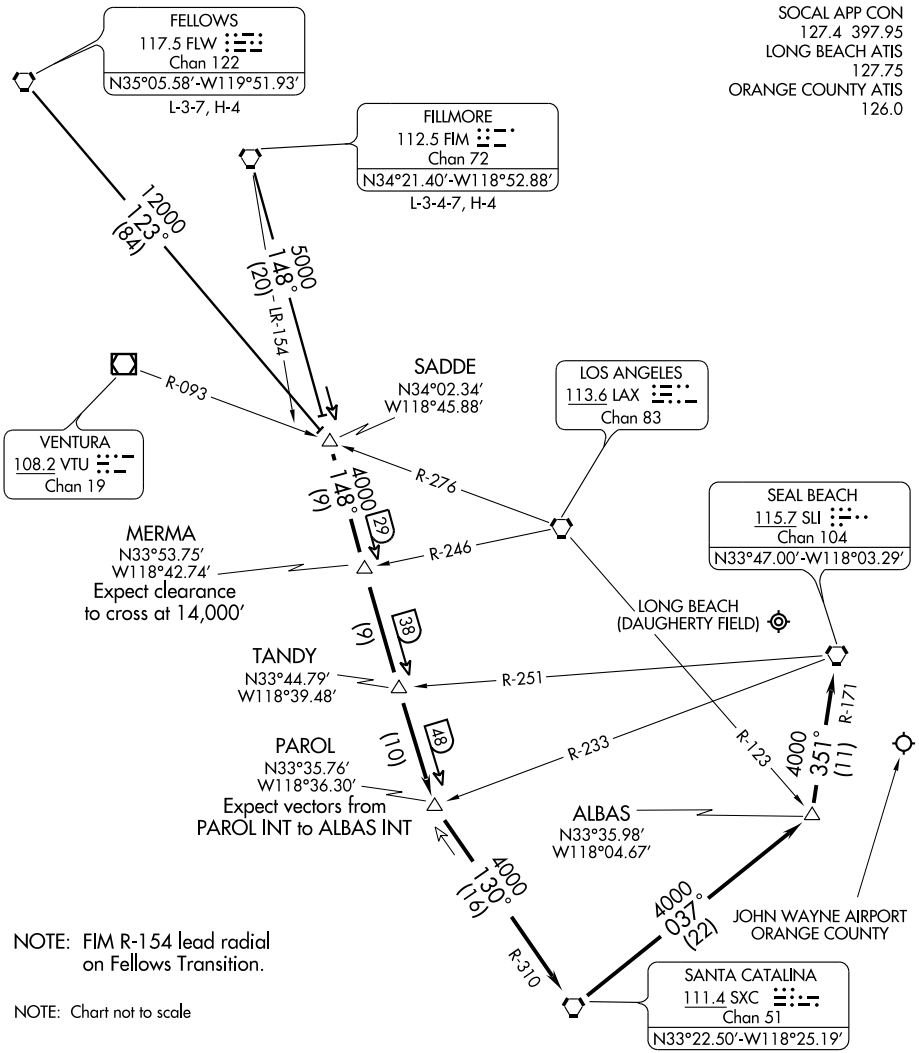


TANDY THREE ARRIVAL

SW-3, 22 OCT 2009 to 19 NOV 2009

SW-3, 22 OCT 2009 to 19 NOV 2009



FELLOWS TRANSITION (FLW.TANDY3): From over FLW VORTAC via FLW R-123 to SADDE INT. Thence....

FILLMORE TRANSITION (FIM.TANDY3): From over FIM VORTAC via FIM R-148 to SADDE INT. Thence....

....From over SADDE INT via FIM R-148 to PAROL INT. From over PAROL INT via SXC R-310 to SXC VORTAC. Then from over SXC VORTAC via SXC R-037 and SLI R-171 to SLI VORTAC.

TANDY THREE ARRIVAL