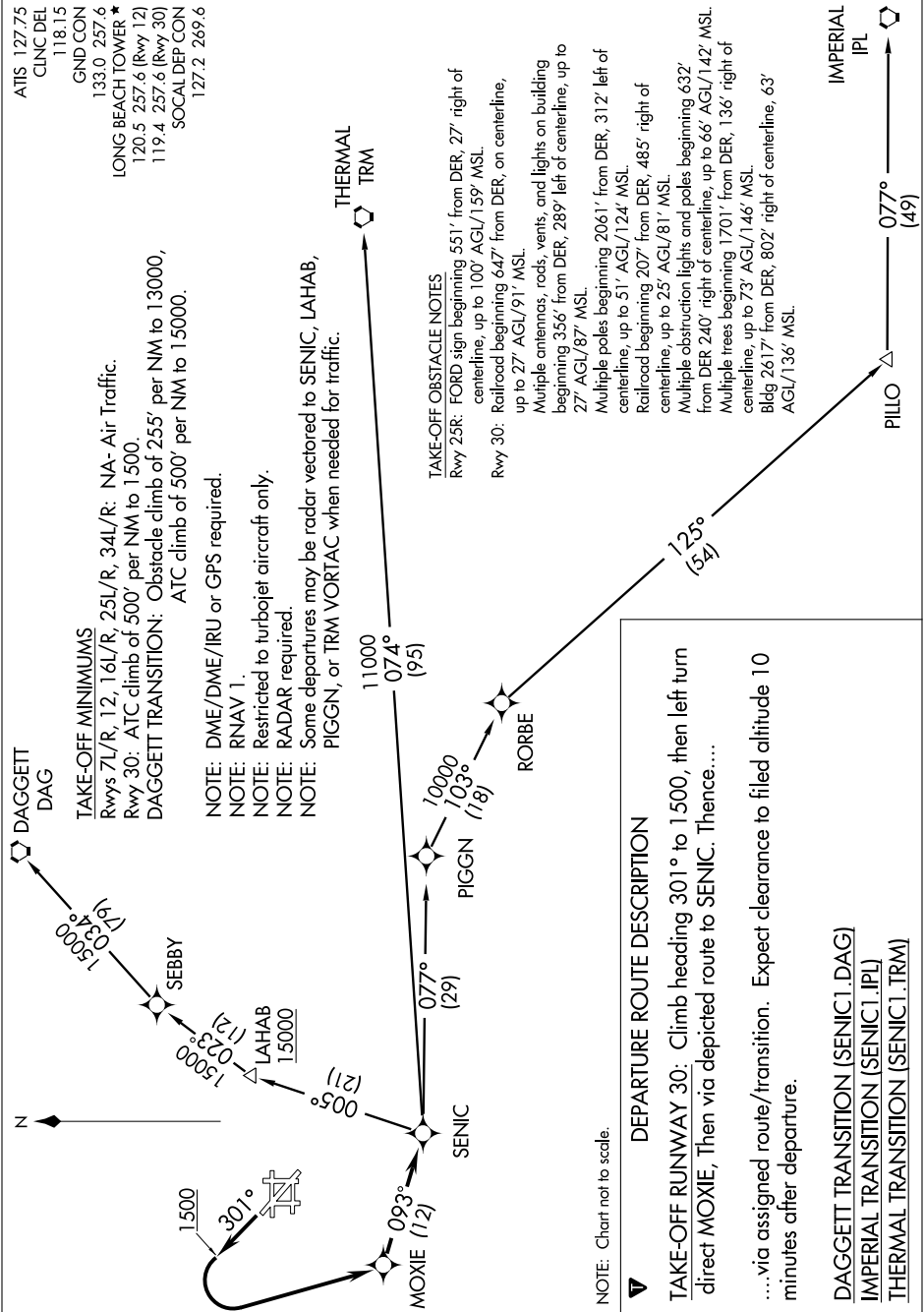


SENIC ONE DEPARTURE (RNAV)

600Z NOV 19 01 600Z OCT 2009 22 'E-WS



ATIS 127.75
 CLNC DEL 118.15
 GND CON 133.0 257.6
 LONG BEACH TOWER ★
 120.5 257.6 (Rwy 12)
 119.4 257.6 (Rwy 30)
 SOCIAL DEP CON 127.2 269.6

TAKE-OFF MINIMUMS
 Rwys 7L/R, 12, 16L/R, 25L/R, 34L/R: NA- Air Traffic.
 Rwy 30: ATC climb of 500' per NM to 1500.
DAGGETT TRANSITION: Obstacle climb of 255' per NM to 13000, ATC climb of 500' per NM to 15000.

NOTE: DME/DME/IRU or GPS required.
NOTE: RNAV 1.
NOTE: Restricted to turbojet aircraft only.
NOTE: RADAR required.
NOTE: Some departures may be radar vectored to SENIC, LAHAB, PIGGN, or TRM VORTAC when needed for traffic.

TAKE-OFF OBSTACLE NOTES
 Rwy 25R: FORD sign beginning 551' from DER, 27' right of centerline, up to 100' AGL/159' MSL.
 Rwy 30: Railroad beginning 647' from DER, on centerline, up to 27' AGL/91' MSL.
 Multiple antennas, rods, vents, and lights on building beginning 356' from DER, 289' left of centerline, up to 27' AGL/87' MSL.
 Multiple poles beginning 2061' from DER, 312' left of centerline, up to 51' AGL/124' MSL.
 Railroad beginning 207' from DER, 485' right of centerline, up to 25' AGL/81' MSL.
 Multiple obstruction lights and poles beginning 632' from DER 240' right of centerline, up to 66' AGL/142' MSL.
 Multiple trees beginning 1701' from DER, 136' right of centerline, up to 73' AGL/146' MSL.
 Bldg 2617' from DER, 802' right of centerline, 63' AGL/136' MSL.

SENIC ONE DEPARTURE (RNAV)