


RNAV (RNP) Y RWY 30

LONG BEACH (DAUGHERTY FIELD) (LGB)

APP CRS	Rwy Idg	8000
301°	TDZE	38
	Apt Elev	60

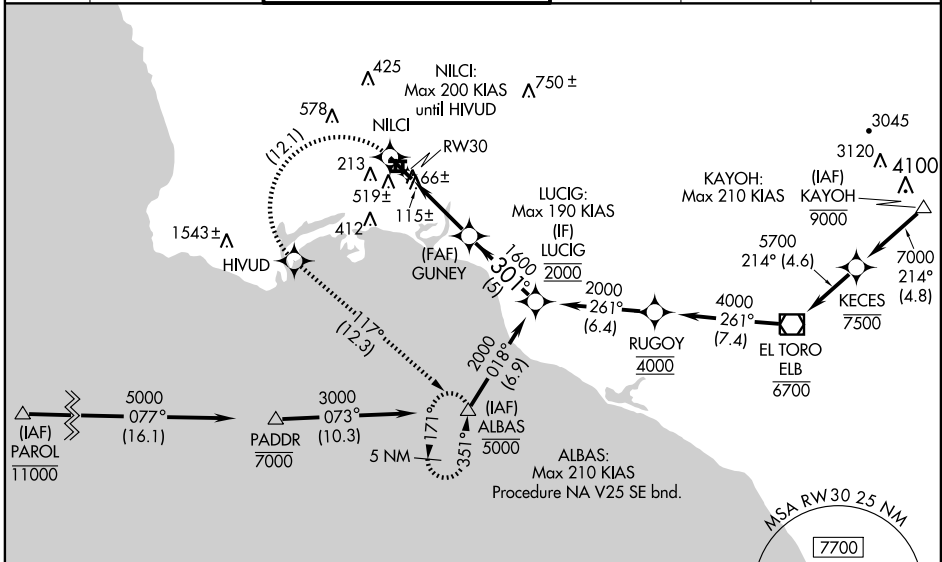
▽ RF and GPS required. Procedure NA when control tower closed.
▲ NA For uncompensated Baro-VNAV systems, procedure NA below 3° C (37° F) or above 48° C (119° F).
 Missed approach requires RNP less than 1.0.
 For inoperative MALSR, increase RNP 0.13 visibility to RVR 5000, and RNP 0.30 visibility to RVR 6000.
 * When VGSI inoperative, procedure NA at night.

MALSR



MISSED APPROACH: Climb to 3000 via 301° track to NILCI, left radius turn to HIVUD, 117° track to ALBAS and hold.

ATIS 127.75	SOCAL APP CON 124.65 316.125	LONG BEACH TOWER* 120.5 257.6 (Rwy 12) 119.4 (CTAF) 0 257.6 (Rwy 30)	GND CON 133.0 257.6	CLNC DEL 118.15	UNICOM 122.95
-----------------------	--	---	-------------------------------	---------------------------	-------------------------

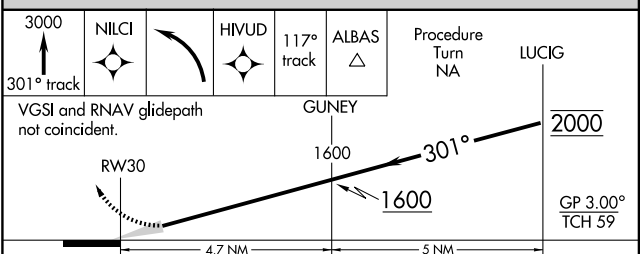


SW-3, 22 OCT 2009 to 19 NOV 2009

SW-3, 22 OCT 2009 to 19 NOV 2009

ELEV	60	D
------	----	----------

TDZ/CL Rwy 30
 MIRL Rwy 7L-25R
 REIL Rws 12, 25L, and 25R
 HIRL Rws 7R-25L and 12-30



CATEGORY	A	B	C	D
RNP 0.13 DA		358/40	320 (300-¾)	
RNP 0.30 DA*		408/40	370 (400-¾)	

SPECIAL AIRCRAFT & AIRCREW AUTHORIZATION REQUIRED