

KAYOH FOUR ARRIVAL

ST-236 (FAA)

LONG BEACH, CALIFORNIA

600Z MON 19 19 01 600Z TUE 22 '08-MS

SOCAL APP CON
133.85 346.35
FULLERTON MUNI ATIS
125.05
LONG BEACH ATIS
127.75
ORANGE COUNTY ATIS
126.0
TORRANCE MUNI ATIS
125.6

HECTOR TRANSITION (HEC.KAYOH4): From over HEC VORTAC via HEC R-211 and PDZ R-030 to DAWNA INT, then via HDF R-353 to HDF VOR then via HDF R-257 and SLI R-075 to KAYOH INT. Thence....

PALM SPRINGS TRANSITION (PSP.KAYOH4): From over PSP VORTAC via PSP R-260 to BANDS INT, then via HDF R-054 to HDF VOR, then via HDF R-257 and SLI R-075 to KAYOH INT. Thence....

....From over KAYOH INT via SLI R-075 to SLI VORTAC. Expect radar vectors to final approach course.

POMONA
110.4 POM
Chan 41

KAYOH
N33°46.82'
W117°35.41'

VERTICAL NAVIGATION PLANNING INFORMATION

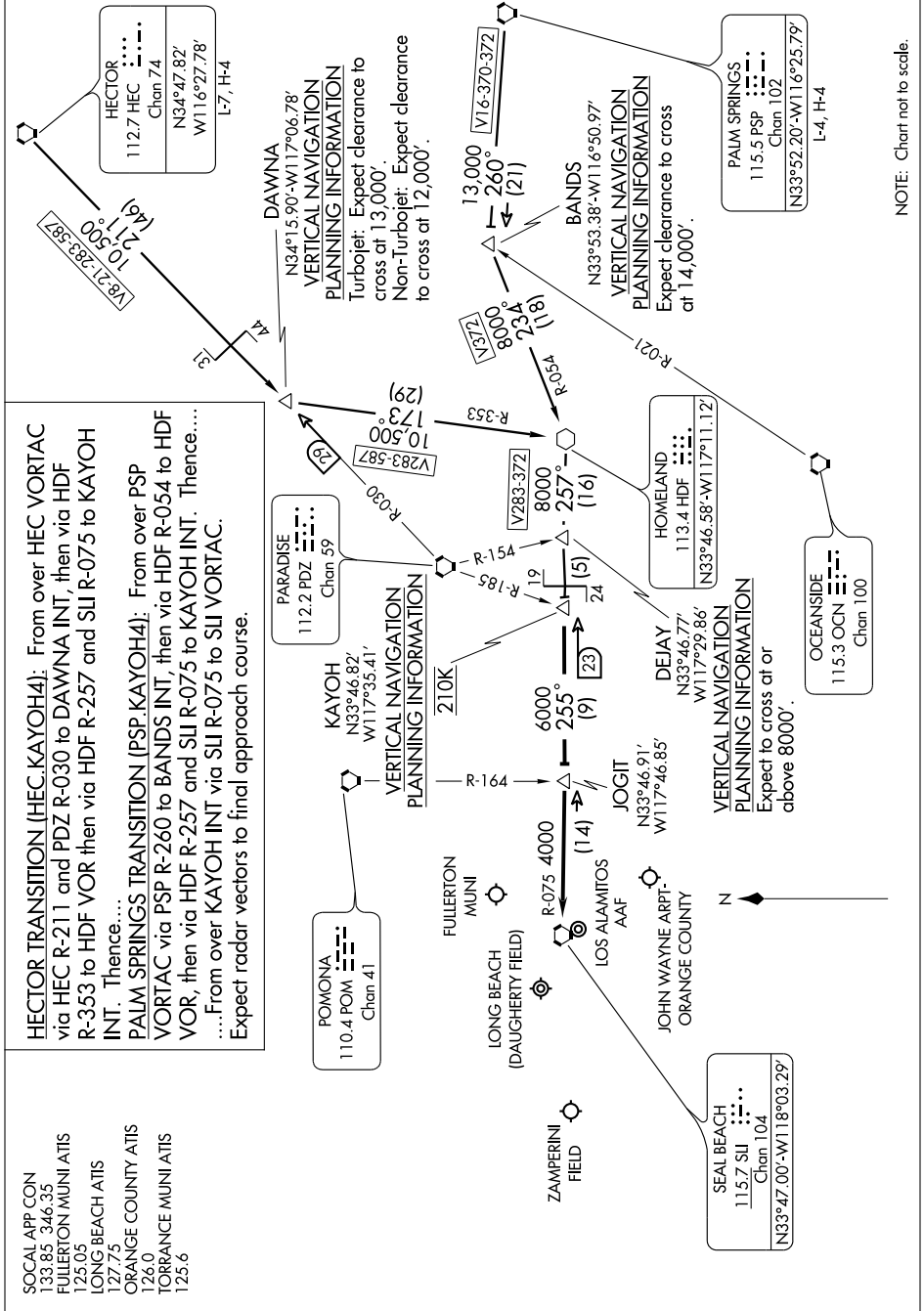
210K

PARADISE
112.2 PDZ
Chan 59

HECTOR
112.7 HEC
Chan 74
N34°47.82'
W116°27.78'

L-7, H-4

SEAL BEACH
115.7 SLI
Chan 104
N33°47.00'-W118°03.29'



NOTE: Chart not to scale.

KAYOH FOUR ARRIVAL

LONG BEACH, CALIFORNIA

SW-3, 22 OCT 2009 to 19 NOV 2009