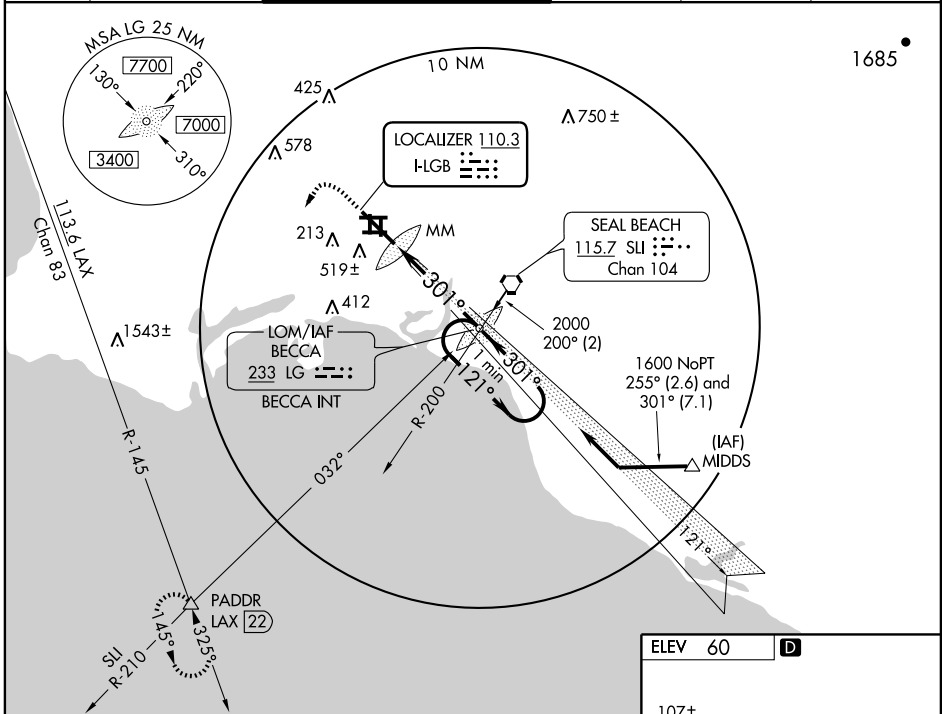


LOC I-LGB	APP CRS	Rwy Idg	8000
<b>110.3</b>	<b>301°</b>	TDZE	<b>38</b>
		Apt Elev	<b>60</b>

# ILS or LOC RWY 30

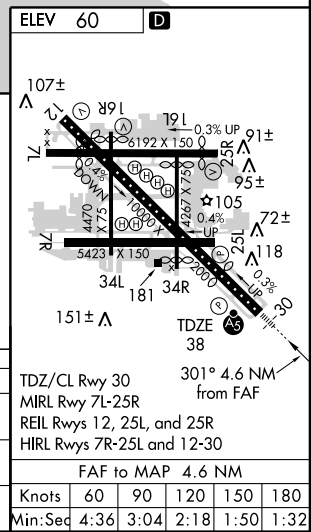
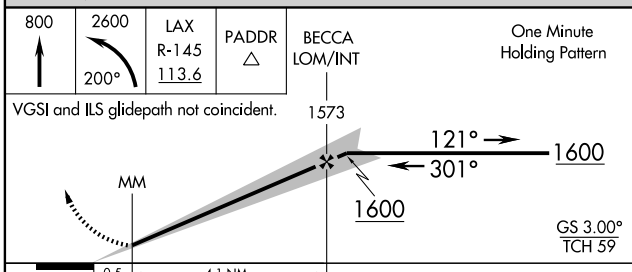
LONG BEACH (DAUGHERTY FIELD) (LGB)

		MALSR 	MISSED APPROACH: Climb to 800 then climbing left turn to 2600 via heading 200° and LAX R-145 to PADDR INT/LAX 22 DME and hold.		
ATIS <b>127.75</b>	SOCAL APP CON <b>124.65 316.125</b>	LONG BEACH TOWER* <b>120.5 257.6</b> (Rwy 12) <b>119.4</b> (CTAF) <b>257.6</b> (Rwy 30)	GND CON <b>133.0 257.6</b>	CLNC DEL <b>118.15</b>	UNICOM <b>122.95</b>



SW-3, 22 OCT 2009 to 19 NOV 2009

SW-3, 22 OCT 2009 to 19 NOV 2009



CATEGORY	A	B	C	D
S-ILS 30	250/18 212 (200-1/2)			
S-LOC 30	520/24 482 (500-1/2)	520/40 482 (500-3/4)	520/50 482 (500-1)	
CIRCLING	880-1 820 (900-1)	880-1 1/4 820 (900-1 1/4)	880-2 1/2 820 (900-2 1/2)	880-2 3/4 820 (900-2 3/4)