



RNAV (GPS) RWY 22L

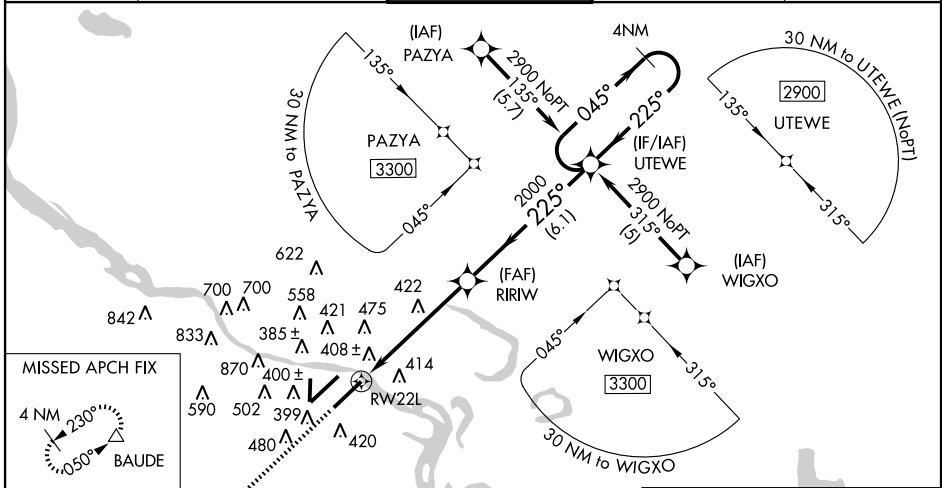
LITTLE ROCK/ADAMS FIELD (LIT)

WAAS CH 42811 W22A	APP CRS 225°	Rwy Idg 8250 TDZE 260 Apt Elev 262
--	------------------------	---

▽ For uncompensated Baro-VNAV systems, procedure NA below -15°C (5°F) or above 48°C (118°F). DME/DME RNP-0.3 NA. Visibility reduction by helicopters NA.
▲ When local altimeter setting not received, use Stuttgart altimeter setting and increase all DA 82 feet and all MDA 100 feet; and increase LPV all Cats, LNAV/VNAV all Cats, LNAV Cat C and circling Cat C visibility ¼ mile. Increase LNAV Cat D visibility ½ mile. Baro-VNAV and VDP NA when using Stuttgart altimeter setting. Inoperative table does not apply to LPV, LNAV/VNAV or LNAV Cat C and D. For inoperative MALSF increase LNAV Cat A and B visibility to RVR 5000. When using Stuttgart altimeter setting, inoperative table does not apply to LPV, LNAV/VNAV or LNAV Cat C and D. For inoperative MALSF, when using Stuttgart altimeter setting, increase LNAV Cat A and B visibility to RVR 5000.

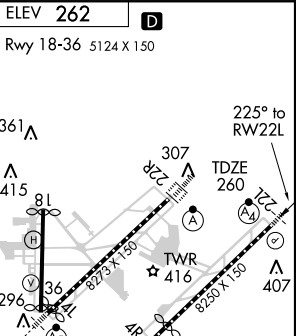
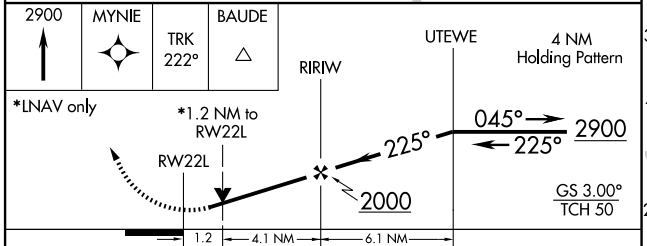
MALSF
 = 
 MISSED APPROACH: Climb to 2900 direct MYNIE and via 222° track to BAUDE and hold.

ATIS 125.65	LITTLE ROCK APP CON 135.4 291.775 353.6	ADAMS TOWER 118.7 257.8	GND CON 121.9 339.8	CLNC DEL 118.95
-----------------------	---	-----------------------------------	-------------------------------	---------------------------



SC-1, 22 OCT 2009 to 19 NOV 2009

SC-1, 22 OCT 2009 to 19 NOV 2009



CATEGORY	A	B	C	D
LPV DA	543/50		283 (300-1)	
LNAV/VNAV DA	773-1¾		513 (600-1¾)	
LNAV MDA	680/40 420 (500-¾)		680/60 420 (500-1¼)	
CIRCLING	760-1 498 (500-1)		880-1¾ 618 (700-1¾) 1180-3 918 (1000-3)	

ELEV 262 **D**
 Rwy 18-36 5124 X 150
 TDZ/CL Rwy 22R
 HIRL Rwys 4R-22L, 4L-22R and 18-36