

LITTLE ROCK, ARKANSAS

AL-233 (FAA)

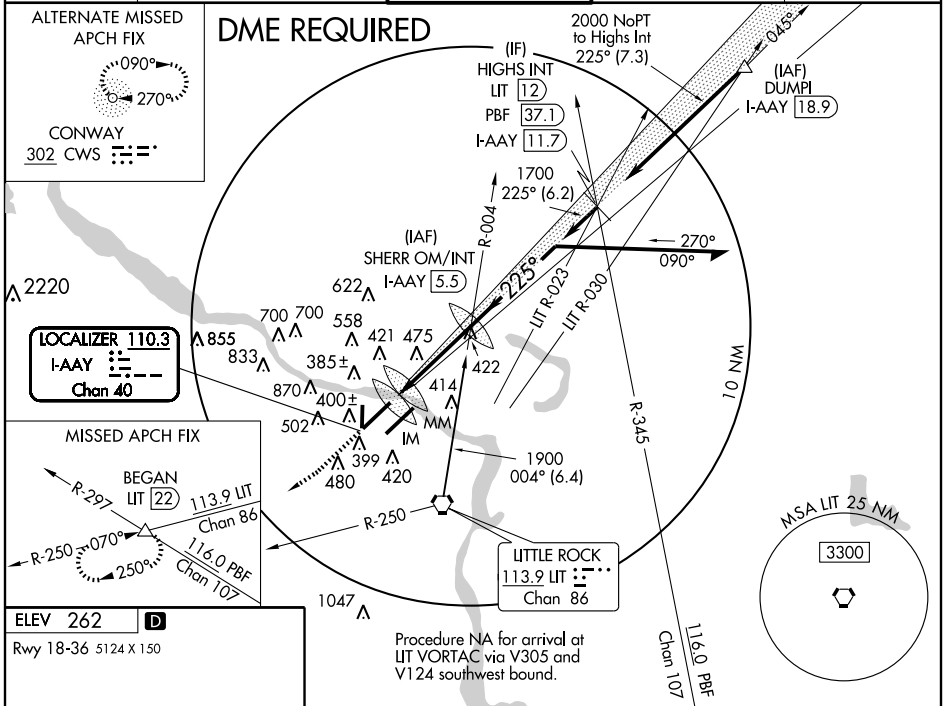
LOC/DME I-AAY <b>110.3</b> Chan 40	APP CRS <b>225°</b>	Rwy Idg TDZE Apt Elev	<b>8273</b> <b>262</b> <b>262</b>
--	------------------------	-----------------------------	---

# ILS RWY 22R (CAT III)

LITTLE ROCK/ADAMS FIELD (LIT)

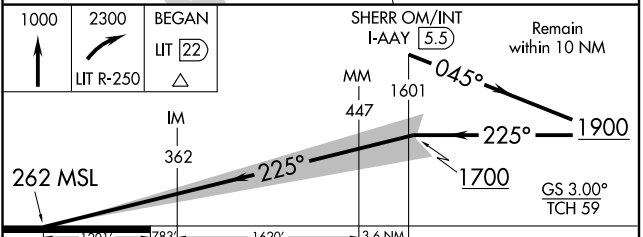
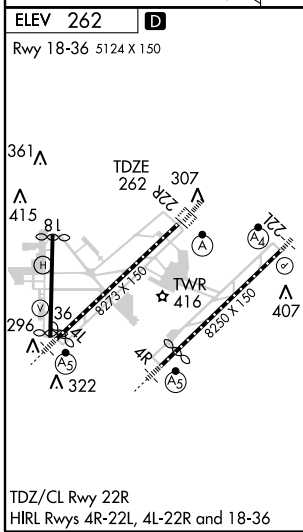
ALSF-2 ASR	MISSED APPROACH: Climb to 1000 then climbing right turn to 2300 via LIT VORTAC R-250 to BEGAN Int/LIT 22 DME and hold.			
	ASR			

ATIS <b>125.65</b>	LITTLE ROCK APP CON <b>135.4 291.775 353.6</b>	ADAMS TOWER <b>118.7 257.8</b>	GND CON <b>121.9 339.8</b>	CLNC DEL <b>118.95</b>
-----------------------	---	-----------------------------------	-------------------------------	---------------------------



SC-1, 22 OCT 2009 to 19 NOV 2009

SC-1, 22 OCT 2009 to 19 NOV 2009



CATEGORY	A	B	C	D
S-ILS 22R		CAT III A RVR 07		
S-ILS 22R		CAT III B RVR 06		
S-ILS 22R		CAT III C NA		

**CATEGORY III ILS - SPECIAL AIRCREW & AIRCRAFT CERTIFICATION REQUIRED**

LITTLE ROCK, ARKANSAS  
Amdt 2 09183

34°44'N-92°13'W

LITTLE ROCK/ADAMS FIELD (LIT)  
**ILS RWY 22R (CAT III)**