

# ILS or LOC RWY 18

LINCOLN (LNK)

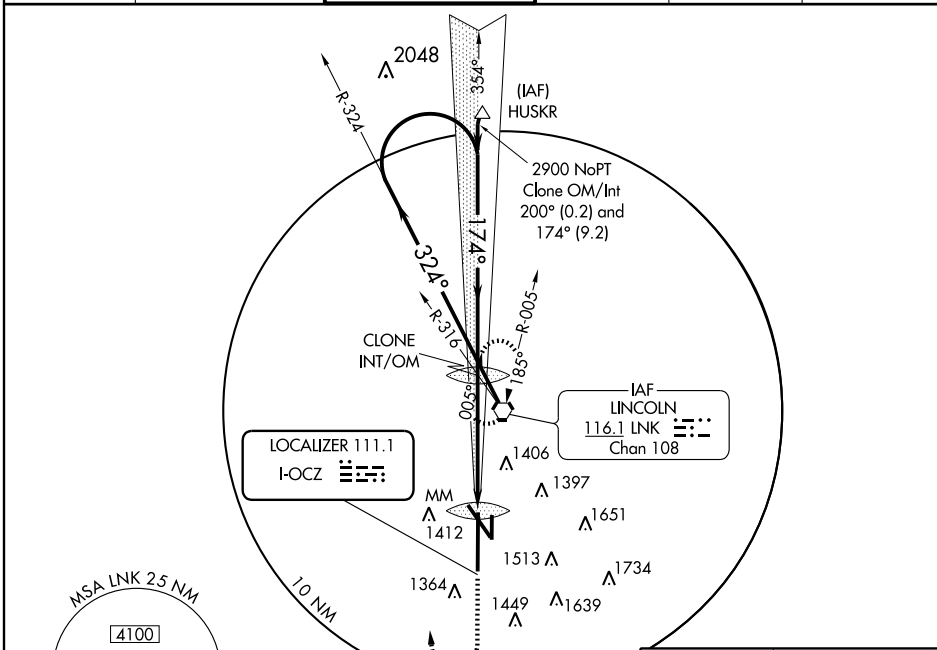
LOC I-OCZ <b>111.1</b>	APP CRS <b>174°</b>	Rwy Idg <b>12901</b> TDZE <b>1195</b> Apt Elev <b>1219</b>
---------------------------	------------------------	--

**▽** \* RVR 1800 authorized with the use of FD or AP or HUD to DA.



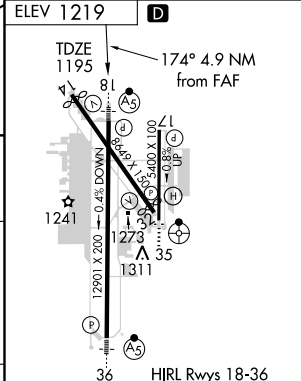
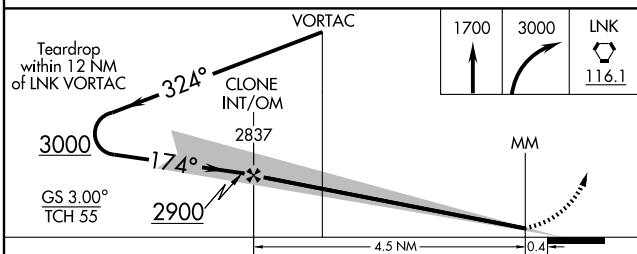
**MISSED APPROACH:** Climb to 1700 then climbing right turn to 3000 direct LNK VORTAC and hold.

ATIS <b>118.05 290.9</b>	LINCOLN APP CON* <b>124.0 270.3</b>	LINCOLN TOWER* <b>118.5(CTAF)253.5</b>	GND CON <b>121.9 275.8</b>	CLNC DEL <b>120.7 225.4</b>	UNICOM <b>122.95</b>
-----------------------------	--	---	-------------------------------	--------------------------------	-------------------------



NC-2, 22 OCT 2009 to 19 NOV 2009

NC-2, 22 OCT 2009 to 19 NOV 2009



CATEGORY	A	B	C	D
S-ILS 18		* 1395/24	200 (200-1/2)	
S-LOC 18	1720/24	525 (600-1/2)	1720/50 525 (600-1)	1720/60 525 (600-1 1/4)
CIRCLING	1720-1	502 (600-1)	1740-1 1/2 522 (600-1 1/2)	1780-2 562 (600-2)

FAF to MAP 4.9 NM					
Knots	60	90	120	150	180
Min:Sec	4:54	3:16	2:27	1:58	1:38